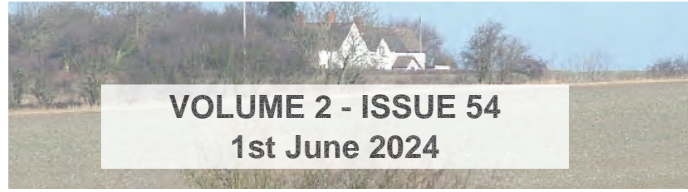


THE DAILY GRUNCH

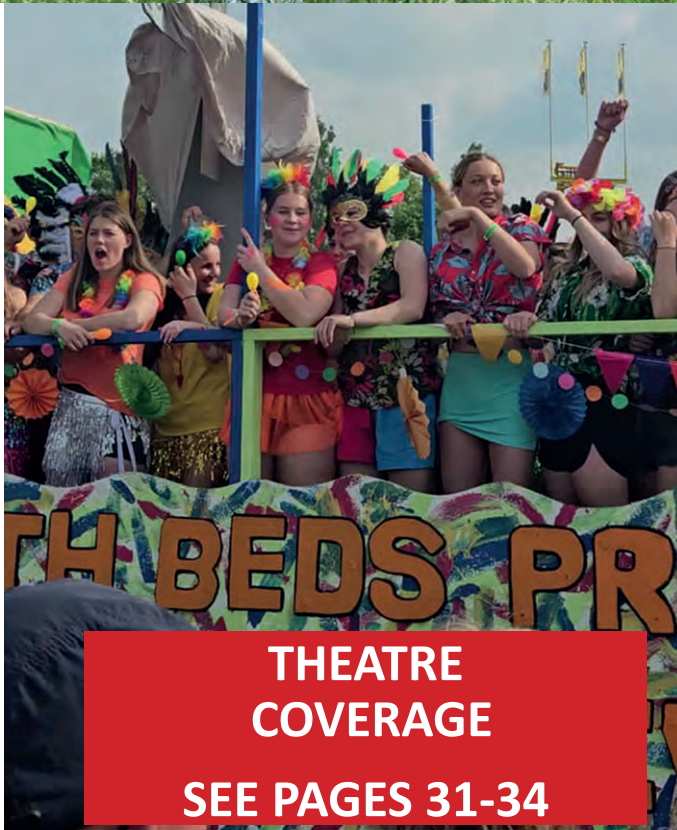
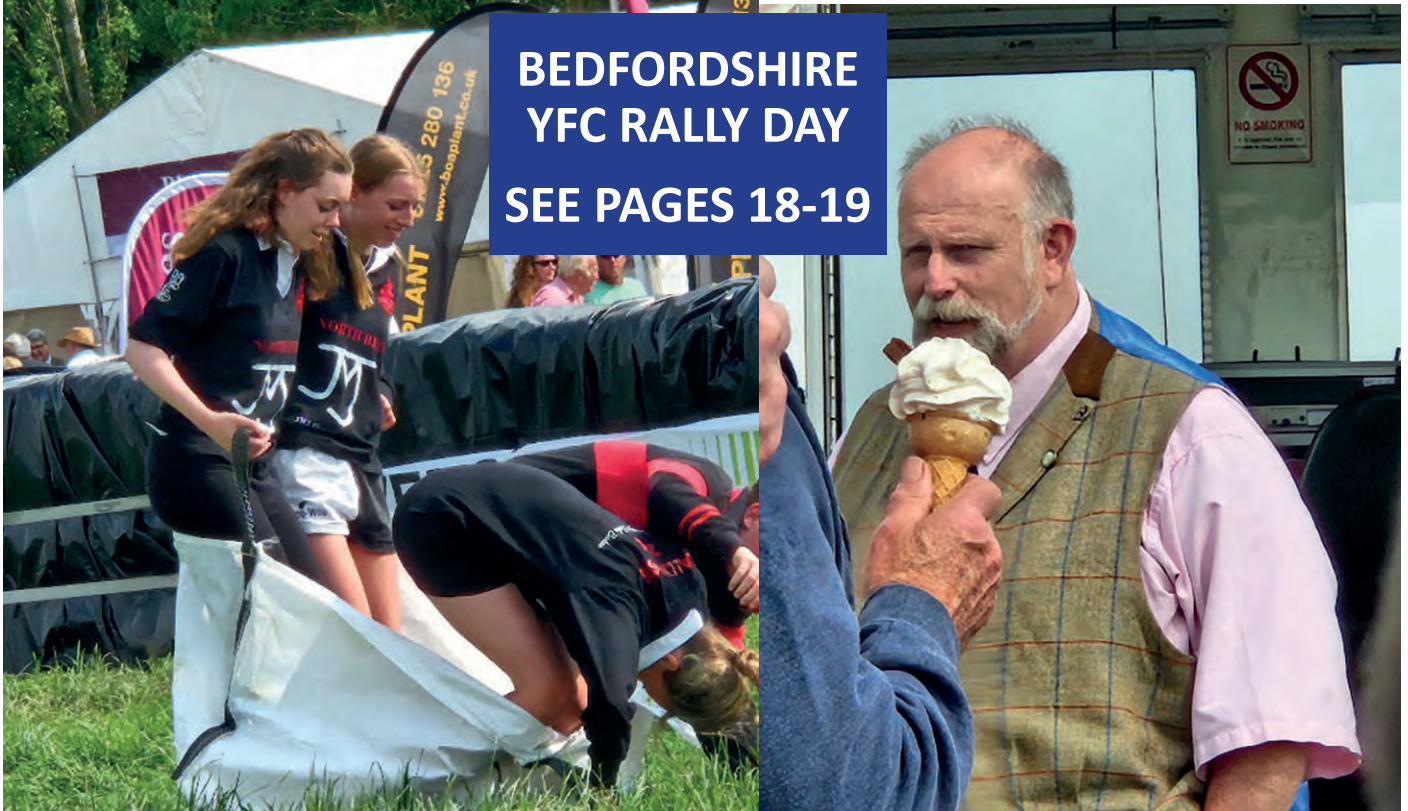
SERVING VILLAGE COMMUNITIES IN NORTH BEDFORDSHIRE



Produced by Grassroots Publications
Previously The Rural Grunch
07725 812963

Email: dailygrunch@outlook.com

Web: www.grassrootspublications.co.uk



PAGE CHANGES TO THE ONLINE DAILY GRUNCH

To assist our readers we have expanded our Key Changes section.

This allows regular readers to see what has changed at a glance in the editions that they may have missed.

SEE RATE CARD ON PAGE 3

Front Cover: Highlights from the Bedfordshire YFC hosted by North Beds YFC at Pertenhall.

Pictures: Graham White

CONDITIONS OF ACCEPTANCE

Although every effort will be made to meet advertisers wishes, the publishers do not accept responsibility for inaccuracies in advertisements or in consequences arising, nor do they guarantee the insertion of any advertisement on a specified date, or in a specified section of the paper. Furthermore, the publishers do not accept any responsibility for one or more of a series of advertisements being omitted for any cause whatsoever. They reserve the right to amend or omit or reclassify or suspend any advertisement previously ordered without giving a reason or prior notice to the advertiser. No responsibility is accepted for the loss or damage to copy, or error in the printing. It is the responsibility of the advertiser to ensure conformity with the Trade Description Act 1968, Sex Discrimination Act 1975 and Business Advertisements (Disclosure Order 1977). All advertisements are accepted in good faith. Placing an order with THE DAILY GRUNCH will signify acceptance of the above conditions.

Artwork forming part or whole of any advertisement prepared by THE DAILY GRUNCH on behalf of any advertiser may not be used in any other publication whatever without permission of the publishers.

KEY CHANGES TO THE DAILY GRUNCH FROM THE LAST ISSUE

1st June: *Page 28, Page 29*

31st May: *Page 23*

30th May: *Page 36*

29th May: *Page 17, Page 18, Page 32*

28th May: *Page 17, Page 39*

27th May: *Page 38*

26th May: *Page 33*

25th May: *Page 18, Page 19, Page 36, Page 37*

24th May: *Page 39*

23rd May: *Page 6*

AS ALWAYS WE ENCOURAGE YOU TO SEND US YOUR NEWS AND DETAILS OF ANY EVENTS YOU MAY BE HOLDING.

Email us at

dailygrunch@outlook.com

Deadline: Approx two working days before publication - for example Friday = 10am Wednesday

WELCOME TO THE DAILY GRUNCH

It will be four years on 12th April since we launched the online Daily Grunch.

This replaced the traditional Rural Grunch, which we had published and printed since March 2009.

We made the decision to go online following the Covid 19 Lockdown that came into effect on 23rd March 2020.

After Covid 19, the UK has suffered a cost-of-living crisis and it is safe to say we would not have been able to continue the magazine in its traditional form due to the increase in prices for paper and print.

As indicated in its title, we are able to update the online magazine on a daily basis and we do this 300 times a year.

This allows us to give coverage of local community events almost immediately after they have taken place rather than wait up to 31 days, which was the case with the printed monthly issue.

The same applies with advertising as we can insert material almost as soon as we

receive the copy. The online magazine is also in colour, which makes our coverage of community events more attractive.

Our goal remains the same - supporting community events and small businesses.

You will have noticed on our access page - www.grassrootspublications.co.uk - that we have produced a number of supplements.

The Summer 2023 includes a record of community events during the first part of last year while the Autumn 2023 does likewise up to Christmas.

We are aiming to produce similar publications for 2024.

We have also set up a Business and Community Directory. Please contact us at dailygrunch@outlook.com for further information including rates for the Directory.

See below for The Daily Grunch Rate Card.

Graham White

RATE CARD

ADVERTISING PRICES

FROM 8th APRIL 2024

Full Page: 30p per issue

1/2 Page: 18p per issue

1/4 Page: 12p per issue

Community Rates: 50% Discount

Invoicing every 100 issues. 300 issues per annum.

All Prices ex-VAT

For further information and to place advertising: dailygrunch@outlook.com

AS ALWAYS WE ENCOURAGE YOU TO SEND US YOUR NEWS AND DETAILS OF ANY EVENTS YOU MAY BE HOLDING.

Email us at

grassrootspublications@btconnect.com
ruralgrunch@btconnect.com

Deadline: Approx two working days before publication - for example Friday = 10am Wednesday

TAKE A SHORT CUT BY SUE

Many people are now reading The Daily Grunch but for some it is a new experience.

For a few, it may be too many clicks or you cannot remember the name of the website.

There is a little trick:

Go to the www.grassrootspublications.co.uk Home Page where the link to The Daily Grunch is located. In the top right hand corner of this page you will see 'three vertical dots'. Click on these and you will see a list of options.

Choose 'Add to Home Screen' and you should have an icon for Grassroots Publications in the favourites area or something similar on your device. Then any time you want to access The Daily Grunch you only have to click on this icon to take you to the link.

If you want to find a specific article in The Daily Grunch try this



Ctrl + F to find the subject/word you are looking for. This avoids trying to find the elusive article.

For example: Open The Daily Grunch – Press **Ctrl + F** which will open a small box, Type in the box the topic/number you are looking for. Say for example - 'Riseley'.

You will find 16 entries in the 27th October.2020 edition.

Sue
www.renholdvillage.co.uk

NEW YEAR'S RESOLUTION

Why not try a walk with North Beds Ramblers?

We are a friendly group who walk on Saturdays:
Every Saturday afternoon, approx. 6 miles

Saturday mornings, twice monthly, 10 -12 miles
Just turn up wearing suitable footwear and clothing
Sorry only assistance dogs allowed



We walk in all weathers,
you may get wet and muddy!!

Bring refreshments
(and plenty of water in the summer)



Interested?

Find our programme on the Ramblers website <https://www.ramblers.org.uk/north-bedfordshire>
Facebook <https://www.facebook.com/groups/northbedsramblers>
Twitter @nb_ramblers

Walks are free but if you decide to walk with us regularly we would like you to join the Ramblers

The Ramblers' association is a registered charity (1093577) and a company limited by guarantee, (No.445892). Registered Office: 1 Clink Street, 3rd Floor, London. SE1 9DG

Collection Calendar

Please ensure that your bins are out for collection by 6am on your collection day. Missed collections must be reported within 48 hours of your scheduled collection. Visit www.bedford.gov.uk/recycling to report a missed collection.



Remember! Garden waste collections are suspended from 1st December to 1st March.

December 2023 and January 2024 Date Changes

Recycling only

Mon 25 Dec	moves to	Sat 23 Dec
Tues 26 Dec	moves to	Weds 27 Dec
Weds 27 Dec	moves to	Thurs 28 Dec
Thurs 28 Dec	moves to	Fri 29 Dec
Fri 29 Dec	moves to	Sat 30 Dec

Rubbish only

Mon 1 Jan	moves to	Tues 2 Jan
Tues 2 Jan	moves to	Weds 3 Jan
Weds 3 Jan	moves to	Thurs 4 Jan
Thurs 4 Jan	moves to	Fri 5 Jan
Fri 5 Jan	moves to	Sat 6 Jan

Key

Red Outline =
Date Change

Orange =
Recycling Only

Purple =
Recycling and Garden

Grey =
General Rubbish

December 2023

M	T	W	T	F
				1
4	5	6	7	8
11	12	13	14	15
18	19	20	21	22
25	26	27	28	29

January 2024

M	T	W	T	F
1	2	3	4	5
8	9	10	11	12
15	16	17	18	19
22	23	24	25	26
29	30	31		

February 2024

M	T	W	T	F
			1	2
5	6	7	8	9
12	13	14	15	16
19	20	21	22	23
26	27	28	29	

March 2024

M	T	W	T	F
				1
4	5	6	7	8
11	12	13	14	15
18	19	20	21	22
25	26	27	28	29

April 2024

M	T	W	T	F
1	2	3	4	5
8	9	10	11	12
15	16	17	18	19
22	23	24	25	26
29	30			

May 2024

M	T	W	T	F
		1	2	3
6	7	8	9	10
13	14	15	16	17
20	21	22	23	24
27	28	29	30	31

June 2024

M	T	W	T	F
3	4	5	6	7
10	11	12	13	14
17	18	19	20	21
24	25	26	27	28

July 2024

M	T	W	T	F
1	2	3	4	5
8	9	10	11	12
15	16	17	18	19
22	23	24	25	26
29	30	31		

August 2024

M	T	W	T	F
			1	2
5	6	7	8	9
12	13	14	15	16
19	20	21	22	23
26	27	28	29	30

September 2024

M	T	W	T	F
2	3	4	5	6
9	10	11	12	13
16	17	18	19	20
23	24	25	26	27
30				

October 2024

M	T	W	T	F
	1	2	3	4
7	8	9	10	11
14	15	16	17	18
21	22	23	24	25
28	29	30	31	

November 2024

M	T	W	T	F
				1
4	5	6	7	8
11	12	13	14	15
18	19	20	21	22
25	26	27	28	29

GRUNCH OPINION

Route E appears to be the likely route for the East West Railway between Bedford and Cambridge.

East West Rail Ltd are now at the pre-application stage for the Development Consent Order, which is required for the project to go ahead.

This is for the whole railway, although parts of the route from Oxford and Cambridge has already been built.

This gives you the feeling that decisions have already been made and we are at a stage where we are simply dotting the 'i' and crossing the 't'.

The current consensus is that the railway is simply for the benefit of Cambridge and Oxford with the towns in-between simply being housing overspill areas.

Along with the freight issues, this is unacceptable and it is hoped once we are in the Development Consent Order stage, those who are making the final decision will take this into account.

Maybe, something is going on behind closed doors, as at the moment it looks a foregone conclusion.

Even at a pre-statutory meeting at Roxton on 20th May, there was a feeling that either people in the area had given up or were not bothered.

Certainly early in the afternoon, there was little signs of any protest.

Even the East West Rail staff appeared to be in buoyant mood especially as they knew they were not going to be challenged.

The principal question now is whether North East Beds MP Richard Fuller is going to make an impact during the Statutory Process.

Considering no final decision is going to be made until 2027 at the earliest, there could be a change of government and possibly even a new MP for our area.

Graham White

DAVID JAMES WWW.DAVIDJAMESKITCHENS.CO.UK



We are a local manufacturer of beautiful kitchens. We sell direct to save you money. The factory showroom has an extensive display of different styles.



**SAVINGS ON ALL KITCHENS
& Up To 25% Off Top Brand
Appliances**

**PULLOXHILL BEDS MK45 5EU
01525 722230**





Treespecific^{Ltd}

tree management

A comprehensive range of tree services from a local dedicated tree surgeon with twenty years experience within the tree industry.

- ✦ All aspects of Tree Maintenance and Tree Care
- ✦ Tree Felling
- ✦ Crown Reduction/Thinning
- ✦ Sectional Dismantling
- ✦ Hedges Reduced and Trimmed
- ✦ Dead Wood Removed
- ✦ Fruit Tree Pruning
- ✦ Tree Planting
- ✦ Fully insured and Skilled Arborist
- ✦ Member of the Royal Forestry Society

Contact us today for a free quote

Telephone: **01234 828895**

Mobile: **07949 368374**

Email: **simonowen@treespecific.co.uk**

www.treespecific.co.uk

FOCUS ON THE VILLAGER BUS

The Villager Bus is run by volunteers for the North Bedfordshire communities. There are scheduled routes each week and it can be hired for outings.

The new bus can take up to 16 passengers including space for one wheelchair user. It has a low floor for easy access and a wheelchair ramp, as well as air conditioning, WiFi and phone charging points.

The Villager Bus provides regular bus services from the North Bedfordshire villages to various destinations, including Olney, Bedford, Milton Keynes, Rushden Lakes and St Ives. Concessionary Bus Passes can be used as well as payment by card or cash. Currently the cost of a single journey to any destination is only £2.

The purchase of the new bus was made possible with the generous support of various sponsors including Bedford Borough Council, the Harpur Trust, The Gale Family Charity Trust, Felmersham and Radwell Community Trust, Wixamtree Trust, The Connolly Foundation and the Christopher H R Reeves Trust.



● The brand new Villager Bus.

The Villager Bus is a service for all, helping everyone to get out to town centres and local supermarkets. It has been run entirely by volunteers since 1987 with the aim of improving the lives of those in the North Beds villages.

The service supports many older people and those with mobility problems who may find it difficult to travel on their own. It's a great opportunity to socialise too! We currently deliver between 250 and 300 passenger journeys a month as well as frequent community hires.

● The Villager Bus (Sharnbrook) committee member Andrew Gell welcomes a passenger for a local service.



FOCUS ON THE VILLAGER BUS

Riseley/Thurleigh – Sainsbury's (Bedford, Clapham Road)
Route VL12 - 1st & 3rd Wednesday of each month

	Out	Return
Riseley, High St. (Gold St)	0930	1135
Bletsoe, Church	0940	1130
Milton Ernest, Opp Queens Head	0945	1125
Sainsbury's	0955	1110
Thurleigh, The Close	1010	1225
Milton Ernest, Marsh Lane	1020	1215
Sainsbury's	1040	1200

Sharnbrook – Riseley - Melchbourne – Rushden - Waitrose/ Rushden Lakes
Route VL13 - 2nd Monday of each month

	Out	Return
Sharnbrook, Lodge Rd/Loring Rd	0855	1308
Sharnbrook, Opp Nisa Store	0858	1305
Bletsoe, Opp Church	0903 RR	1300
Thurleigh, The Close	0918 RR	1255
Riseley, High St (Gold St)	0930	1243
Riseley, Primary School	0933	1240
Swineshead, Church	0936	1237
Upper Dean	0943 RR	1230
Melchbourne	0948 RR	1225
Yelden, High Street /Spring Lane	0953	1220
Newton Bromswold Village	0957	1216
Rushden, College Street	1003 RR	1210
Rushden, Waitrose/Rushden Lakes	1012 RR	1201

Felmersham - Sharnbrook - Riseley - Kimbolton - Huntingdon - St Ives
Route VL14 - 3rd Monday of each month

	Out	Return
Felmersham, The Sun	0840 RR	1557
Sharnbrook, Lodge Rd/Loring Rd	0850	1550
Sharnbrook, Opp Nisa Store	0900	1547
Bletsoe, A6 Bus Stop	0905 RR	1542
Milton Ernest	0907 RR	1540
Thurleigh, The Close	0905 RR	1535
Riseley, High St (Gold St)	0917	1523
Riseley, Primary School	0920	1520
Swineshead, Church	0923	1517
Melchbourne Village	0929 RR	1511
Upper Dean, High Street	0933	1507
Shelton, Bus Stop	0937 RR	1503
Lower Dean, High Street	0942	1458
Tilbrook, White Horse	0945	1455
Kimbolton, Post Office	0948	1452
Stonely, Main Road	0950	1450
Gt. Staughton, Snooty Tavern	0953	1447
Dillington, Crossroads	0954	1446
Perry, Opp Wheatsheaf	0956	1444
Brampton, Thrapston Road	1007	1433
Huntingdon, Bus Station	1010	1430
St Ives, Bus Station	1025	1415

Sharnbrook - Harrold - Turvey - Milton Keynes
Route VL15 - 1st Tuesday of each month

	Out	Return
Sharnbrook, Swan	0930	1331
Sharnbrook, Lodge & Loring Rd	0932	1329
Odell, The Bell	0936	1325
Harrold, Centre	0943	1318
Carlton, The Fox, via The Moor	0950	1311
Turvey, The Green	0958	1303
Newton Blossomville, Old Mill	1004	1257
Clifton Reynes, Robin Hood	1011 RR	1250
Milton Keynes, Shop Centre	1030	1230

The Villager Minibus



The Villager is a friendly bus service that runs through many North Bedfordshire villages going to Milton Keynes, Olney, Rushden Lakes, St Ives and Sainsbury's in Bedford. All Concession Pass holders travel free and children travel half price.

Do support your local community bus service run and driven by volunteers.

Thurleigh - Harrold - Lavendon - Olney - Milton Keynes
Route VL4 - 2nd Tuesday of each month

	Out	Return
Thurleigh, The Close	0900 RR	1322
Milton Ernest, Queens Head	0905 RR	1317
Radwell Village	0907 RR	1315
Felmersham, Sun	0910	1313
Carlton, Crossroads	0918	1307
Carlton, The Fox	0920	1305
Harrold, Centre	0925	1300
Lavendon, Cross	0935	1250
Olney, Market Place	0940	1245
Milton Keynes, Marks & Spencer	0958	1230
Milton Keynes, The Point	1000	1230

24 April 2023

Passengers are strongly advised to book their journeys, apart from the Olney and Sainsbury's runs, using our website.
www.sharnbrookvillagerminibus.co.uk
 Or phone: 01234 708191

Where you see RR in the timetable, this means **Rider Request**. The bus calls for passengers on request only, ie where booked.

Sharnbrook - Felmersham - Odell - Harrold - Lavendon - Olney Market
Route VL5A - Every Thursday

	Out	Return
Sharnbrook, The Swan	0910	1148
Sharnbrook, Lodge Rd/Loring Rd	0912	1146
Felmersham, The Sun	0915 RR	1143
Odell, Bell	0920	1138
Harrold, Green	0924	1134
Lavendon, Cross	0932	1126
Olney, Market Place	0938	1120

Clapham-Oakley-Stevington-Turvey-Milton Keynes
Route VL6 - 4th Tuesday of each month

	Out	Return
Clapham, Community Centre	0900	1330
Oakley, High Street	0905	1325
Oakley, Memorial	0907	1323
Pavenham, Close Road	0910	1320
Pavenham, Weavers Lane	0913	1317
Stevington, West End	0918	1312
Stevington, Cross	0920	1310
Bromham, Grange Lane	0925	1305
Turvey, Station Road	0930	1303
Turvey, The Green	0932	1300
Newton Blossomville, Old Mill	0938	1253
Clifton Reynes, Robin Hood	0945 RR	1243
Milton Keynes, Marks & Spencer	0958	1230
Milton Keynes, The Point	1000	1230

Sharnbrook/Odell - Harrold - Sainsbury's (Bedford, Clapham Road)
Route VL11 - 2nd & 4th Wednesdays of each month

	Out	Return
Sharnbrook, Opp Fordham Arms	0930	1230
Sharnbrook Court	0935	1225
Sharnbrook, The Swan	0937	1223
Sharnbrook, Lodge Rd/Loring Rd	0940	1220
Odell, The Bell	0943	1217
Harrold, Centre	0948	1212
Carlton, The Fox	0954	1206
Pavenham	1003	1157
Clapham	1015	1145
Sainsbury's	1020	1140

Our bus is available for community private hire. Our website has more information:

www.sharnbrookvillagerminibus.co.uk

or e-mail: villagerbus.sharnbrook@gmail.com

If you are interested in becoming one of our volunteer drivers do phone us for an informal chat without any obligation on 01234 708191.



Carlton - Stevington - Bromham - Turvey - Cold Brayfield - Olney Market
Route VL5B - Every Thursday

	Out	Return
Carlton, Fox	1003	1243
Stevington, West End	1008	1238
Stevington, Cross	1010	1236
Stevington, Alms Houses	1012	1234
Bromham, Grange Lane	1017	1229
Turvey, Station Road	1023	1223
Turvey, Jacks Lane	1025	1221
Turvey, Green	1026	1220
Cold Brayfield	1028	1218
Olney, Market Place	1036	1210

Melchbourne-Riseley-Sharnbrook-Olney-Milton Keynes
Route VL7 - 3rd Tuesday of each month

	Out	Return
Melchbourne, Village	0850 RR	1335
Swineshead, Church	0855 RR	1330
Riseley, Primary School	0900 RR	1326
Riseley, High St (Gold St)	0903 RR	1323
Bletsoe, Church	0909 RR	1317
Sharnbrook, Swan	0916	1310
Sharnbrook, Lodge Rd/Loring Rd	0918	1308
Odell, The Bell	0921	1305
Harrold, Centre	0926	1300
Lavendon, Cross	0931	1255
Olney, Market Place	0936	1250
Milton Keynes, Marks & Spencer	0954	1230
Milton Keynes, The Point	0956	1230



**93A High Street, Rushden
NN10 0NZ**

01933 350866

app.timbrownsbutchers.com

enquiries@tebrownbutchers.co.uk

**Beef, Lamb, Pork, Chickens, Sausages, Bacon
and so much more**



GRUNCH NEWS

The East West Rail (EWR) are now preparing for the Development Consent Order (DCO) process for the new railway to be built between Oxford and Cambridge.

A DCO is a piece of law that, if granted, would give authority for EWR to build the new railway and for it to be operated. This process would grant consent to the entire project combining multiple approvals into one document.

There are six stages to the DCO process - Pre-application (no set timescale), Acceptance (28 days), Pre-Examination (3 months), Examination (6 months), Decision (6 months), Post Decision (six weeks).

EWR are not expecting to submit their application, which would include the Route E between Bedford and Cambridge, via Clapham Park, Ravensden and Wilden, until the end of 2025 at the earliest. Therefore a final decision could be made in 2027.



● A sparse crowd at the East West Rail pre-statutory consultation meeting at Roxton on 20th May.



R.J.F. Plumbing, Heating
& Mechanical Services Ltd

Roger Flanagan
Director

38 Hookhams Lane
Renhold
Bedford MK41 0JT
Office: 01234 771396
Mobile: 07717 756677
Email: info@rjf-plumbing.co.uk



PLEASE SUPPORT OUR ADVERTISERS

Lane &

HOLMES

Est. 1985

Sales, Lettings & Auctions



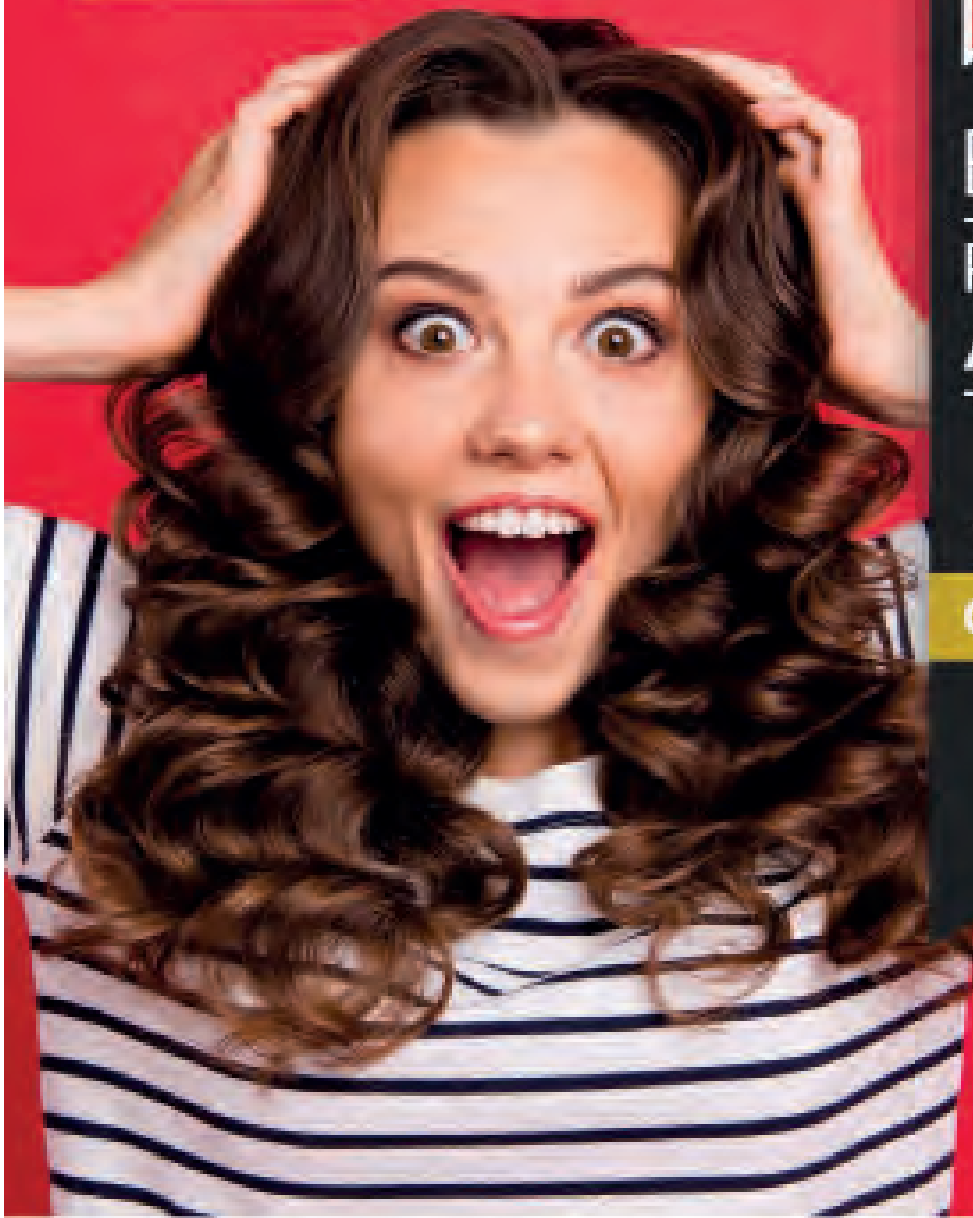
BRITISH
PROPERTY
AWARDS

2021



GOLD WINNER

ESTATE AGENT
IN BEDFORD



Have you seen... We **won!**
For a winning service, **talk to us.**

01234 327744 | sales@laneandholmes.co.uk | laneandholmes.co.uk

HARROLD PIT RUN



The centre of the Harrold Pit Run is on the Village Green, the scene of the start and finish of the 5km race.

There were also plenty of stalls, musical entertainment while refreshments were served at the Harrold Centre. This was a change of venue as the Baptist Church is currently being refurbished.

The occasion was perfect for local clubs such as Harrold and Carlton FC to promote themselves.

SATURDAY 27th APRIL

HARROLD PIT RUN



The 40th Harrold Pit Run was won by Theo Beale, representing Oakley-Doakley Neighborinos, in a time of 15 minutes and 31 seconds. Andrew Kinight was second in 16:02 and Danny Winn third in 16:06.

Sean Crawley was first veteran home in fourth clocking 16:57 while Alexandra Crabb, pictured left, was first lady in 17:57.

SATURDAY 27th APRIL

WILDEN MAY DAY FAYRE



The Wilden May Day Fayre has returned after a few years absence.

It was last held before Covid-19 but the Wilden VA Primary School has re-ignited the event albeit initially on a smaller scale.

The highlight was the Maypole Dancing by the School's pupils and it is hoped the event will again grow.



MONDAY 6th MAY



Andrew Blair

Professional Carpet and Upholstery Cleaning

Phone or Whatsapp 07867499792

e-mail arblair64@yahoo.co.uk

website

<https://andrewblairprofessionalcarpetandupholsterycleaning.com>

PLEASE SUPPORT OUR ADVERTISERS



ABACAB DOG GROOMING

New dog grooming service in Ddell. We offer a personal service aimed to meet the needs of you and your dog, catering for all breeds large or small. Our services include:-

- Clipping/trimming
- Hand stripping (Terriers and Spaniels)
- Nail trims

TELEPHONE:- 01234 720825 OR 07860 837043

SI TAX & ACCOUNTING SERVICES

**QUALIFIED ACCOUNTANT
FCCA ATT**

**Professional and friendly service
Sole Traders, Limited Companies
Partnerships, Business Start-ups
Bookkeeping, Payroll, CIS
Subcontractors
VAT & Tax**

**sally@sjtax.co.uk
01234 831997
07899 808592**

PLEASE SUPPORT OUR ADVERTISERS

FOR YOUR DIARY

Saturday 1st June: North Beds Ramblers Walk - Wilstead at 1.30pm. Meet at Whitworth Way Car Park. 6 miles. Hilly, muddy and slippery if wet. No road walking or stiles. Lovely walk in local area. For further details go to www.ramblers.org.uk/north-bedfordshire

Saturday 1st June: Giddy Goat Cafe, High Street, Riseley. 10am-3pm. Summer Craft Fayre. Plenty of stalls. Free Entry.

Saturday 1st June: Coffee Shop, Stables Christian Centre, Bolnhurst. 2pm-4:30pm
Homemade cakes with tea, coffee in a rural setting. On sale: plants, preserves, and craft items. Facebook: [stableschristiancentre](https://www.facebook.com/stableschristiancentre)

Saturday 8th June: Ravensden Village Hall. 7pm Pub Night. Live music from Freddie's Barnet. Tickets £10 to include first drink. More info from Chris on thebends@btinternet.com

Sunday 9th June: Newton Bromswold. 2pm-5pm. Newton Bromswold Open Gardens. Visit gardens of Newton Bromswold. Refreshments in Village Hall. Adult Ticket: £3. Family Ticket - 2 adults and 2 children: £5

Saturday 15th June: Bletsoe Village Hall from 1.30pm. Bletsoe Country Fete. Plenty of entertainment for all the family.

Saturday and Sunday 15th and 16th June: St Neots Road, Bolnhurst at 10am. Bolnhurst Steam Rally and Country Show. Entertainment for all the family

Tuesday 18th June: Addison Centre, Addison Park, Kempston at 2.30pm. Bedford National Trust. AGM and talk by Anne French of Wimpole Hall who will talk about 'Some of the exciting work being done at Wimpole and how it is supported by our wonderful volunteers.' Refreshments. No charge. For further information ring Betty Thomas on 01480 860421

Friday 21st June: Colmworth Village Hall, Church Road, Colmworth at 7.30pm. Talk by Richard Storey on 'Grafham Water'. Visitors welcome for a donation of £4. Membership is £12.50 per annum.

Saturday 6th July: Newton Bromswold at 2pm. Newton Bromswold Village Fete. Rushden Mission Band and usual variety of stalls and games. Plus afternoon teas

Saturday 20th July: Barn in Newton Bromswold at 7pm. Barn Dance with band Kelly's Eye. Tickets - Adults £12.50 and Children £5. Available in June on 07703 476689. Proceeds to Friends of Newton Church.

Every Sunday: Great Barford Village Hall at 10am. Great Barford Run Together. Running for fun for all standards including novices.

Every Thursday: Riseley Village Hall 3.30-5pm. Riseley Bus Stop Cafe for School Years 7-13 During school term.

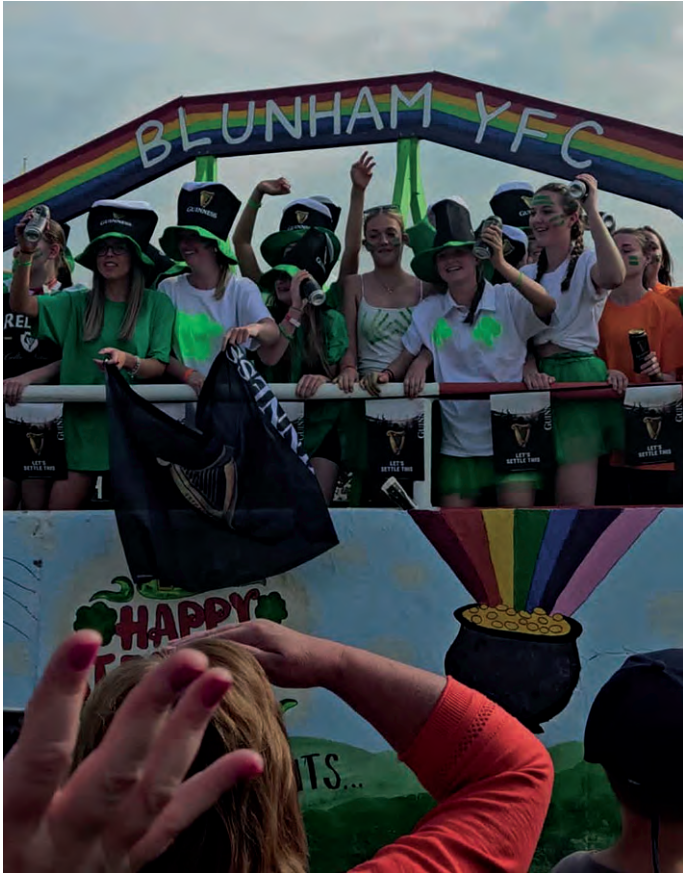
First Friday of the Month: Keysoe Village Hall at 7.30pm. Bar Night

Every Saturday: There may be cricket matches at Riseley, Sharnbrook and Thurleigh

FOR YOUR DIARY

£1 per insertion per 30 days for a max 30 word insertion, cheque payable to Grassroots Publications, may be sent to Grassroots Publications, 2, Strawberry Hill Cottages, Knotting Green, Bedford, MK44 1AB Use this section to advertise any community or social event that may be coming up in the forthcoming months. It can include sports events. We reserve the right to omit any dates if payment is not made. If in doubt feel free to contact us on 07725 812963 or email: dailygrunch@outlook.com. Price includes VAT

BEDFORDSHIRE YFC RALLY DAY HOSTED BY NORTH BEDS AT PERTENHALL



Hosts North Beds finished second overall in the 2024 Bedfordshire Young Farmers Rally at Pertenhall..

It was a memorable day with some fine entertainment in the main ring including the finale - the parade of floats and the subsequent flour and water fight that is now something of a tradition.

SPECIAL RALLY SUPPLEMENT
www.grassrootspublications.co.uk
 Click on Bedfordshire YFC Rally

SATURDAY 18th MAY

BEDFORDSHIRE YFC RALLY DAY HOSTED BY NORTH BEDS AT PERTENHALL



A highlight of the day at the 2024 Bedfordshire Young Farmers Rally at Pertenhall was the carnage at the start of the Sack Race. Only Silsoe were not affected by the chaos and went on to win the event.

The other competitions including the Livestock judging, crafts, cookery and flowers were also well contested.

SPECIAL RALLY SUPPLEMENT
www.grassrootspublications.co.uk
Click on Bedfordshire YFC Rally

SATURDAY 18th MAY

41st St Neots Folk Festival

7th 8th and 9th June 2024

The Priory Centre
Priory Lane, St Neots. PE19 2BH

A weekend of Live music and dance.

Friday 

Evening Showcase Concert Tickets £12.00

Bram Taylor, James Findlay, Clark and Johnson

 **Saturday** 

Day of Dance in Town Free - various sites

Evening Concert Tickets £27.00

Steve Knightley (founding member of Show of Hands)
and **Landermason**

Sunday 

Afternoon workshop with Moonrakers Tickets £10.00

Evening concert Tickets £20.00

Moonrakers and Na Mara

Information available on the website.

Contact St Neots Folk Club

stneotsfolkclub@aol.com

<http://www.stneotsfolkclub.co.uk/>

01234 376278

Parking nearby and bar on site.



SARTORI WELLNESS

Therapeutic Massage

Feeling tired, stressed, stiff aching muscles, do you work on your feet all day?

Come unwind and relax with a therapeutic massage.

Choose from a Thai Foot Massage, Indian Head Massage or Tension Relief Massage.

Fully qualified and insured. Ladies Only. Based Rushden Northamptonshire

Contact Mary To Book

Tel: 07464 100195

Email: sartoriwellness@gmail.com

www.facebook.com/sartoriwellness



**SARTORI
WELLNESS**

PLEASE SUPPORT OUR ADVERTISERS

BOLNHURST WALK



There was plenty of interest in the May Bank Holiday Walk at Bolnhurst.

After enjoying refreshments at The Old School, walkers ventured out on a selection of routes of varying distances.

This included several of our four-legged friends.

On their return, the walkers had hot food waiting for them.

Those who did not fancy the exercise were able to browse

the wide collection of books in the Old School.

Money raised from this event will be donated to Macmillan.

An Open Garden event is being held on 22nd June.

MONDAY 6th MAY

GRUNCH NEWS

□ Changes are being made to the Bletsoe Fete on Saturday 15th June from 1pm. The afternoon event will have a Country and Western theme with plenty of music and a bronco. Plus the traditional Car and Dog Shows. The organisers are putting on evening entertainment featuring music, a Tex Mex dinner and dancing. Tickets for the evening event are £12 For further details 07789 915926.

□ A classical music concert will take place at St Mary's Church, Felmersham on Saturday 8th June at 7.30pm. Renowned local singers Bridget Peirson-Davis and Alan Mackenzie will be performing accompanied by pianist Janet Welsh and the Ouse Valley Singers. There will be a collection at the end for St Mary's and light refreshments plus wine at the interval.

□ The Bolnhurst Rally and Country Fayre is on Saturday 15th June and Sunday 16th June featuring vintage vehicles and main ring shows including the Waldburg Shire Horses, The Pacesetters German Shepherd Dog Display and Matt Ager's gun dogs.



● A plaque has been erected for the Catherine Stone, which is in Riseley High Street. Henry VIII's first wife Catherine of Aragon is believed to have rested on this stone on her way from Ampthill Castle to Buckden Palace, now known as Buckden Towers, where she stayed for a few months before being transferred to Kimbolton Castle where she died in 1536.

Picture: Riseley and Friends Facebook



Telephone 01234 709163
or 07899 016129



Best New Business
2012

Qualified Chimney Sweep

-  Riseley based professional Chimney Sweep.
-  Fully qualified member of The Guild of Master Sweepers.
-  Police CRB checked and £2 million liability insurance.
-  Service reports that are recognised by all insurance companies.
-  Specialist equipment used for Woodburning Stoves & Lined Chimneys.
-  Recommended by local Stove / Fireplace installers.
-  CCTV inspections and reports.

PLEASE SUPPORT OUR ADVERTISERS

Contact Tony, your local Chimney Sweep.

www.black-horse-chimney-sweep.co.uk e-mail tnav59@btinternet.com

FOCUS ON THE ST NEOTS FOLK CLUB

Tuesday 7th May

St Neots Folk Club

Live Music

8pm-10.30pm

The Priory Centre

St Neots

Open stage featuring Eastern Waves, South of Polaris, Jeremy Reynolds and Stephen Skull.

Tuesday 14th May

St Neots Folk Club

Live Music

8pm-10.30pm

The Priory Centre

St Neots

Tristan Seume. Steel string acoustic guitarist.

Tuesday 21st May

St Neots Folk Club

Live Music

8pm-10.30pm

The Priory Centre

St Neots

Jack Badcock. Singer and guitarist.



● *Tristan Seume is performing at The Priory Centre, St Neots on Tuesday 14th May.*

Tuesday 28th May

St Neots Folk Club

Live Music

8pm-10.30pm

The Priory Centre

St Neots

Round the Room. Performers and audience welcome.



● *Jack Badcock is performing at The Priory Centre, St Neots on Tuesday 21st May.*

**FOLK MUSIC EVERY
TUESDAY AT
THE PRIORY CENTRE**

www.stneotsfolkclub.co.uk

KEYSOE PLANT SALE



It may not have been the best of weather for gardening but the Keysoe Plant Sale still went ahead on Saturday 27th April.

A steady flow of visitors congregated on the Village in the search for the perfect plants for their flower beds.

For some, however, it was the ideal time to have a natter, including the two gentlemen in the picture above.

The next big occasion is on Saturday 11th May at 10am when the popular Jumble Sale is held.

These events aim to raise funds for the Village Show at Keysoe on the first Saturday in September.



SATURDAY 27th APRIL

FOCUS ON THE RISELEY SHOW



After more than a decade in the role, Judith Wright has stepped down as organiser of The Riseley Show.

Judith rebuilt the event from scratch and turned it into one of the best occasions in north Bedfordshire.

However, the future is in good hands as a trio of well-known faces in the village have taken on the responsibility of organising the events on the field at this year's show on 14th September - **Nicky Perfect, Karen Aves and Sharlene Taylor.**

Sharlene said: "This year, we are aiming to showcase everything that makes Riseley so special. From our fantastic local groups to the vibrant community spirit, we want to celebrate it all.

"We want to have all of the incredible Riseley groups to come together for a day of fun and festivities.

"We appreciate not all groups are able to have a stall.

"If that is the case we would like to showcase your group as part of our visual display. This will include all the different groups in Riseley.

For further information on how you can get involved email:

riseleyvillageshow@outlook.com



THE RISELEY SHOW

SATURDAY 14th SEPTEMBER

PUT THE DATE IN YOUR DIARY

GRUNCH NEWS

The idyllic village of Morsham does not exist but resembles many English villages which do,

When a series of unexpected deaths occur, Chief Inspector Inskip of the Bedford CID begins to suspect that these are not simply accidents and that something more sinister is at play.

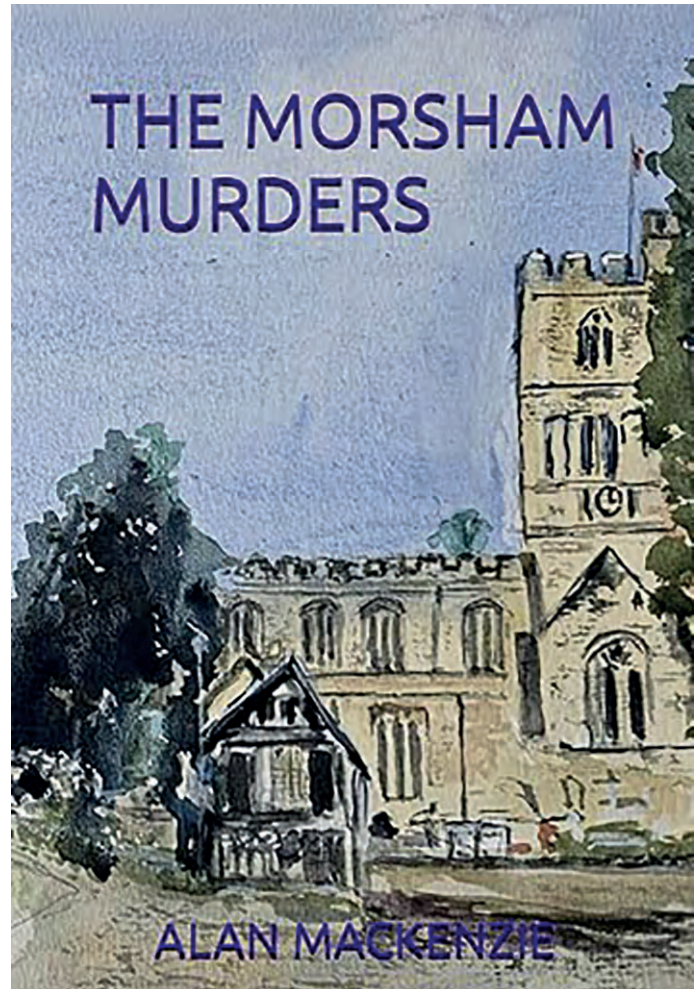
But is he just missing the excitement of the murders he dealt with in the Met? Are the deaths related to an epidemic of drugs in the county of Bedfordshire?

And how many more will die before he and his young DS Jenny Lynch can solve the case?

Many will wonder if Morsham is really a settlement in north Bedfordshire - maybe Oakley, Swineshead or even Felmersham.

For well known author Alan Mackenzie hails from Clapham.

Well worth a read and is available on Amazon.



Bedford Borough Council - Rural Bulky Skips Placements 2024						
Village	Date	Start	Finish	Location 1	Location 2	Location 3
Erwinham	11 May 2024	08:00	12:30	Village Hall Car Park (08:00-12:30)		
Biddisham	11 May 2024	13:00	18:00	Beddenham Pasture (13:00-18:00)		
Clapham	11 May 2024	08:00	11:00	Tarmosed Road (8:00-11:00)		
Oakley	11 May 2024	11:30	15:30	Raynes Drive (11:30-15:30)		
Wiltstead	18 May 2024	08:00	10:00	Lay-by, Bedford Road near the Recycling Banks (08:00-10:00)		
Wixams	18 May 2024	10:15	12:15	Dane Lane (10:15-12:15)		
Elstow	18 May 2024	13:00	15:30	Abbeyfields, Layby outside Elstow Primary School (13:00-15:30)		
Wootton	18 May 2024	08:00	12:00	The Barn Road (08:00-12:00)		
Great Denham	18 May 2024	13:00	15:30	Great Denham, near First Roundabout (13:00-15:30)		
Turvey	25 May 2024	08:00	10:15	Turvey Football Club - Grove road (08:00-09:00)	Station End (09:15 - 10:15)	
Stagsden	25 May 2024	10:30	12:00	Wick End Junction Main Road (10:30-12:00)		
Carlton & Chillington	25 May 2024	08:00	10:00	Entrance to Village Hall (08:00-10:00)		
Pavenham	25 May 2024	10:30	12:00	The Bury (10:30-12:00)		
Stavington	25 May 2024	13:00	15:00	Playing Fields (13:00-15:00)		
Cotton End & Shortstown	08 June 2024	08:00	15:30	Layby on Wood Lane, Cotton End (8:00-12:00)	Beacons Square, Shortstown (12:45-15:30)	
Sharnbrook	08 June 2024	08:00	11:30	Station Road (Top End) (08:00-09:30)	School Approach (09:45 - 11:30)	
Bletsoe	08 June 2024	11:45	13:45	School House Layby (11:45-13:45)		
Harrah	08 June 2024	14:00	15:00	Peaches Close (14:00-15:00)		
Great Barford	15 June 2024	09:30	12:00	Village Hall Car Park, Fisher Close (9:30-10:30)	Pym's Close (10:45-12:00)	
Ravenhill	15 June 2024	08:00	09:00	Layby outside 3-6 Wilton Road (8:00-9:00)		
Ravenoden	15 June 2024	13:00	15:00	Adjacent to the Horse and Jockey Pub and Vicarage Close Junction (13:00-15:00)		
Babburston & Keysoe	15 June 2024	08:00	10:00	Village Hall Car Park, Keysoe Road West (8:00-10:00)		
Rosely	15 June 2024	10:30	12:45	Village Hall Car Park, Gold Street (10:30-12:45)		
Oslet	15 June 2024	13:15	14:30	Village Green near The Bell Pub (13:15-14:30)		
Little Barford	22 June 2024	08:30	09:30	Adjacent to School (08:30-9:30)		
Wyboston, Chawston & Coltedon	22 June 2024	10:00	12:00	Village Hall, Wyboston (10:00-12:00)		
Raxton	22 June 2024	13:00	14:30	Persh Hall Car Park (13:00-14:30)		
Knottling & Boulton	03 August 2024	08:00	10:30	Knottling Green (08:00-09:00)	Bouldrop, near The Green (09:30-10:30)	
Milton Ernest	03 August 2024	11:00	12:30	Village Hall (11:00-12:30)		
Thorleigh	03 August 2024	13:30	15:30	Layby adjacent to Numbers 3&5 The Close (13:30-15:30)		
Felmersham & Radwell	03 August 2024	08:00	12:00	The Green, Radwell (8:00-10:00)	Marmitts Close, Felmersham (10:30-12:00)	
Widley	03 August 2024	13:00	15:30	The Victoria Arms PH, adjacent to The Green (13:00-15:30)		
Podington	10 August 2024	08:30	12:00	Humbert Close (08:30-12:00)		
Wymington	10 August 2024	13:00	15:00	Manorial Hall, Car Park (13:00-15:00)		
Little Staughton	10 August 2024	08:00	10:00	Grays Grove (08:00-10:00)		
Colworth	10 August 2024	10:30	15:00	Channels End Road (10:30-12:00)	Little Staughton Road (13:00-15:00)	
Kempston Rural	17 August 2024	08:00	10:00	Ridge Road (08:00-10:00)		
Stewartby	17 August 2024	10:30	15:30	Alexander Close (10:30-12:30)	Pilling Road / Magoo Avenue Junction (13:00-13:45)	Kin Drive (14:00-15:30)
Cople	17 August 2024	08:00	12:00	Junction of Rye Crescent & Wylington Road (08:00-10:00)		
Carlington	17 August 2024	13:00	15:30	Pearson Place (13:00-15:30)	Village Hall, Grange Lane, Cople (10:30-12:00)	
Willington	24 August 2024	08:00	09:45	Village Hall Car Park (8:00-9:45)		
Staploe, Dulax & Honeydon	24 August 2024	10:15	15:30	Entrance to Woodhouse Lane, Dulax (10:15-12:00)	Entrance to Falls Farmyard, Staploe (13:00-14:00)	Rear Driveway of 9 Chapel Close, Honeydon (14:30 - 15:30)
Perdenhall	24 August 2024	08:00	09:30	Village Hall (08:00-9:30)		
Dean & Shelton	24 August 2024	10:00	15:30	East of Bridge, Lower Dean (10:00-11:00)	Top of Shey Lane / High Street, Upper Dean (11:30-12:30)	Near Triangle, Shelton (13:30-15:30)
Swineshead	24 August 2024	08:00	10:00	Outside Village Hall (08:00-10:00)		
Matchbourne & Yelden	24 August 2024	10:30	15:00	Village Hall Car Park, Matchbourne (10:30-12:00)	Bottom Of Church Lane, Yelden (13:00-15:00)	

GRUNCH RECIPES

OUR FAVOURITES

Lamb Tikka Samosa BBC Good Food Team

2tsp olive oil plus 100ml for brushing
400g lean lamb mince
4tbsp tikka paste
1 large onion, grated, excess juice squeezed out
1 large carrot peeled and grated
4tsp dried mint
2tbsp mango chutney plus extra to serve
200g frozen peas
270g pack filo pastry - 6 sheets
Leaf salad and raita to serve

In a large, wide pan, heat 1tsp oil. Season the lamb well and fry until browned all over.

Add the tikka paste to the pan and fry for a further two minutes until fragrant. Add the onion and carrot with the remaining 1tsp oil and fry for five minutes until the veg has softened.

Tip into a large bowl and mix with the mint, chutney and frozen peas. Leave to cool.

Spread out a sheet of filo with a short end towards you. Brush with oil all over. Fold each long side into the centre by 5cms so you have a long, narrow piece of filo.

Add about 130g of mixture to the top left of the strip and fold the top right corner of the filo to make a triangle. Then fold from the left and then from the right to complete the samosa shape. Usually three folds are necessary.

Transfer to a baking tray lined with baking parchment and if freezing wrap in cling film and place in freezer. Use within three months. Repeat with other filo sheets.

Heat oven to 200°C. Cook the samosas in the middle of the oven for 35-40 minutes, turning over halfway through cooking, until golden and piping hot in the middle.

Drain on kitchen paper to absorb excess oil and serve with salas, extra chutney and raita.

GP SERVICES GROUNDWORK AND DIGGER HIRE



- Mini Digger and Driver Hire
- Various Size machines
- Breaker/Auger Attachments
- Dumper Hire
- Foundations/Concreting/Drainage
- Site Clearance
- Tree and Root Removal
- Sewage Treatment Plants Installed
- Leach Fields Installed
- Road Construction/Drives
- Patios/Hard Landscaping
- Menage/Horse Arena Construction
- Muck Heap Removal
- Fencing

01234 782940
07932 002937

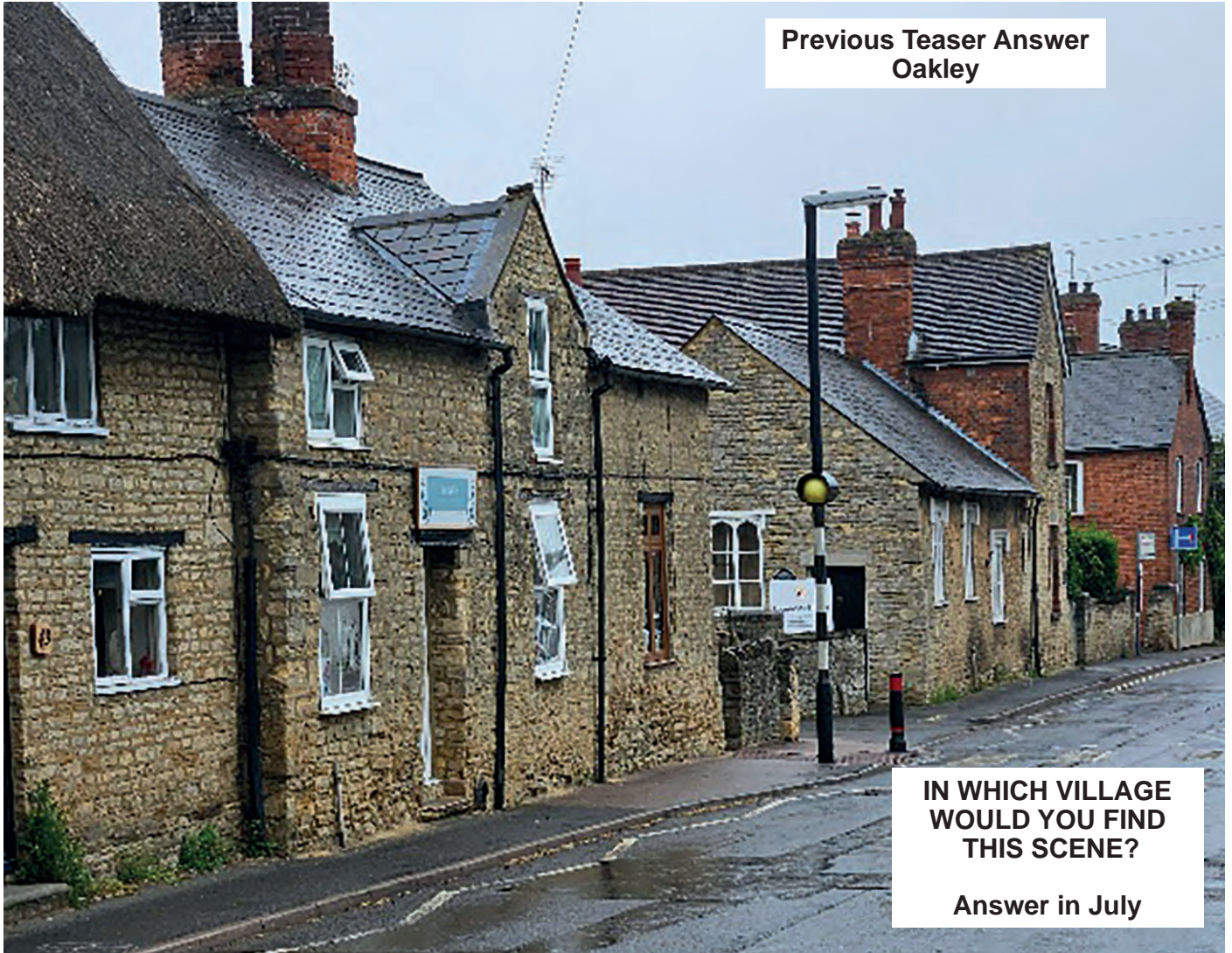
enquiries@gpservicesonline.com
www.gpservicesonline.com

PETER HAYES
PROPRIETOR

FULLY INSURED

GRUNCH TEASER

Previous Teaser Answer
Oakley



IN WHICH VILLAGE
WOULD YOU FIND
THIS SCENE?

Answer in July

**Pub Night in
Ravensden Village Hall.
Saturday 8th June 7pm**

**Live music from
Freddie's Barnet**

**Tickets £10 each to
include first drink**

**More info from Chris on
thebends@btinternet.com**



FREDDIE'S BARNET



COLMWORTH OPEN GARDENS

Sunday 23rd June 2024

1pm to 5pm - £5 entry

Visit Gardens, Working Smallholding, Colmworth Country Park, Village Triangle Garden

TICKETS FROM **COLMWORTH VILLAGE HALL**
CHURCH ROAD, COLMWORTH, MK44 2JX

Tea & Cakes at Village Hall | **FREE PARKING** at Village Hall

Children go free but must be accompanied by an adult.

Sorry no dogs admitted to gardens.



FOCUS ON BEDFRINGE FESTIVAL

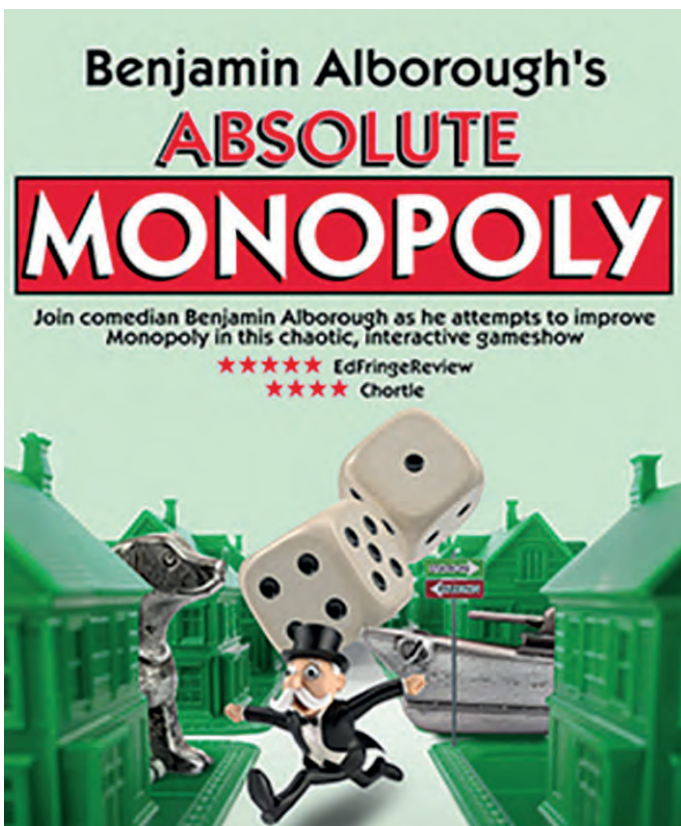


The Bedford Fringe Festival officially takes place between Thursday 18th July and Sunday 28th July at the Quarry Theatre but there is an hors d'oeuvres event on Tuesday 16th July at 7.30pm when Ivo Graham performs his 'work in progress' act Grand Designs.



This show on 19th July at 8pm by the well known Scottish Falsetto Sock Puppet Theatre Co will be in the best possible good taste.

An hour of songs, sketches, socks and violence, telling the true story of the Post Office Scandal.



Comedian Benjamin Alborough attempts to improve the image of Monopoly in this chaotic show on 19th July at 6.30pm where the audience finally become the game board.



This group of youngsters, based at Goldington Acamedy, Haylands Way, Bedford on a Saturday morning, will bring the latest West End hits to your doorstep on 20th July at 12 noon.

FOR FURTHER DETAILS

www.quarrytheatre.org.uk/bedfringe/

FOCUS ON BEDFRINGE FESTIVAL



Riseley's Sarah Chiari will be performing at the Bedford Fringe Festival on Tuesday 23rd July at 8.05pm in the Quarry Theatre Bar.

The Festival takes place from 18th July to 28th July with most of the tickets becoming available in March.

Sarah will be performing her own work featuring original songs written with passion, influenced by folk and jazz.

There will be atmospheric music with digital piano and voice.

This will be a 'Pay What You Can' event with suggested amounts ranging from £2 to £20.

Headline acts during BedFringe include Kiri Pritchard-McClean, who has appeared at The Apollo.

For further information see:
www.quarrytheatre.org.uk



Kelly McCaughan (HBO, Apple TV+) presents Catholic Guilt on 18th July at 6pm. Does daddy Jesus's naked body on the cross make you wet? This show will. Seriously, there's water. So, put on your waterproof panties and get ready to unpack everything from losing your virginity in the most holy way, to abortion, to a bowling experience that leads to eternal damnation, and much more.



Mark's storytelling in the Studio is a Bedfringe fixture. He's back for the 12th time in 14 years on 18th July at 6.30pm and 19th July at 3pm and will be partnered by Sara Turner. Transformation – shape-shifting, metamorphosis – has been a vital part of storytelling from the earliest epics to modern fantasy, and in all cultures. Mark offers four stories where physical change grows naturally from the circumstances. Three are his telling; Sara Turner will sing the fourth – one of the oldest and greatest of British folk songs.

FOR FURTHER DETAILS

www.quarrytheatre.org.uk/bedfringe/

GRUNCH THEATRE

*Kris Wilkinson Hughes Presents
My Girl The River - Album Launch
The Place, Bedford
22nd June
7.30pm
Tickets: £15 Concessions: £12.*

Join My Girl The River, Bedford's own genre blending acoustic duo, to celebrate the upcoming release of their third album, a collection of singles and unreleased songs entitled 'Songs About Space'.

Kris and Joe will be joined by other musicians on the night to perform the new album and some favourites from their first two releases. Special guest, Bedford guitarist Charlie Luscombe, will provide some fingerstyle guitar upon arrival and during the interval.

My Girl The River is the work of Louisiana to Nashville to London songwriter and performer Kris Wilkinson Hughes along with husband, bassist Joe Hughes.



**FOR FURTHER DETAILS CONTACT THE PLACE BEDFORD
www.theplacebedford.org.uk or phone 01234 354321**

GRUNCH THEATRE

*The Lost Forest
Indigo Moon Theatre
The Place, Bedford
2nd June
11.30am and 2pm
Tickets: £12 Children £8*

Join Indigo Moon Theatre as they present The Lost Forest, a mesmerising performance of puppetry and digital projection for young children and families.

Discover a tale of climate change and deforestation as small creatures flee the destruction of their natural habitats.

This popular, long running show is timelessly relevant, taking environmental concerns and weaving a fun and dynamic show around them.



**FOR FURTHER DETAILS CONTACT THE PLACE BEDFORD
www.theplacebedford.org.uk or phone 01234 354321**

GRUNCH THEATRE

Super Heros Shenanigans
Produced by Kaye Leidoskope
The Place, Bedford
30th May

10am and 11.15am

Free - Check with website if tickets required

Come and join Kaye Leidoskope at her 'Superhero Training Academy' for an interactive session full of dress up, crafts and total superhero shenanigans!

At this playful session aimed at children age 5-12 and their families, participants will discover their superpowers, create a superhero, and maybe even save the world!

This session is free. There will be a photographer taking photos for future publicity purposes.



FOR FURTHER DETAILS CONTACT THE PLACE BEDFORD
www.theplacebedford.org.uk or phone 01234 354321

GRUNCH THEATRE

The Importance of Being Earnest
The Pantaloons
The Place, Bedford
4th-8th June

7.30pm plus 3pm on 8th June

Tickets: £15 Concessions £12

Everybody loves Earnest. In fact, Cecily and Gwendolen are both engaged to Earnest. The only trouble is, he doesn't exist. Or does he...?

Best friends Jack and Algy have both created alter-egos to win the affections of their beloveds; but when will they stop being Earnest and start being, well, earnest?

Wilde's comic masterpiece gets The Pantaloons treatment in their anarchic take on the classic comedy of manners. This energetic and musical production from the critically-acclaimed company infuses Wilde's witty words with snappy new songs and frantically funny physical theatre to give this perennially popular play a hilarious contemporary twist!



FOR FURTHER DETAILS CONTACT THE PLACE BEDFORD
www.theplacebedford.org.uk or phone 01234 354321



professional dog grooming

**Fully Qualified and Insured Dog
Groomer. I work one on one with your
dog, with a range of services.**

**63 High Street, Wilden,
Bedfordshire, MK44 2QD**

**07538276993/
k9kutsgroomers@outlook.com**

Facebook- k9kutsgroomers



Keysoe & Bolnhurst

Open Gardens

Saturday

22nd June

2-5pm



Spend a lovely afternoon in Keysoe and Bolnhurst visiting a variety of beautiful gardens throughout the parish with teas, plant sales and various stalls located in both villages

Tickets/maps* for entry to all gardens are available at The Chequers, Pertenhall Rd, Keysoe and The Old School, School Lane, Bolnhurst on the day

All ticket and tea proceeds will be shared between St Mary's in Keysoe and St Dunstan's in Bolnhurst

Tickets £5 each—Cash only event

Assistance Dogs Only



STEVINGTON 12KM ROAD RACE



Charlie Palmer won the Stevington 12km in a time of 43 minutes and 26 seconds.



In damp and blustery conditions, Danny Winn was second in 44:14 and David Haslam was third in 44:42.

Eugenia Cordero-Crespo was first lady finishing 31st overall in 56:58.



SUNDAY 28th APRIL

DAILY GRUNCH TEST MATCH

*Sharnbrook/Bromham 198-8 beat
Buckland/Aston Clinton 51 by 147 runs*



Sharnbrook/Bromham are pictured batting during their Four Counties League Division One match against Buckland/Aston Clinton on 25th May.

The top left picture shows Tom Billers being bowled for seven as Sharnbrook/Bromham posted 198-8.

Andrew Jackson, above, top scored with 43 and went on to take 5-32 as their visitors were bowled out for 51.

The right-handed batsman is Chris Grice.

GRUNCH CRICKET

NORTHAMPTONSHIRE LEAGUE: Thurleigh are second in **Division Five**, equal on points with New Bradwell, following their emphatic 185-run victory over Raunds Town on **25th May**.

Significant innings from Andy Milne, 68, Chris Wood 63 and Ashkat Singh, 63 not out helped Thurleigh to 295-6.

Raunds Town were unable to challenge this target and were bowled out for 110 with Rob Stean taking 3-8 from 1.4 overs.

FOUR COUNTIES LEAGUE: Sharnbrook/Bromham skittled Buckland & Aston Clinton for 51 in **Division One** with captain Andrew Jackson taking 5-32 after making 43 in the hosts' 198-8. **Picture Coverage on Page 38**

BEDFORDSHIRE INVITATION LEAGUE: There was a break from league action on 25th May as some clubs took part in the Twenty20 competition. After a promising start in Division Two, Thurleigh II were hoping for success in the shorter version of the game. However,

they suffered a defeat in their opening group game at Harrod II.

Thurleigh II never got into their stride and were bowled out for 77 off 17.5 overs. Harrod II lost wickets regularly in their reply but edged home by three wickets reaching 80-7.

FIXTURES

Saturday 1st June

Northamptonshire League Division Five: Willoughby v Thurleigh.

Four Counties League - Division One: Cranfield University v Sharnbrook/Bromham
Division Three: MK Stallions II v Harrod.

Bedfordshire Invitation League - Division One: Pavenham/Felmersham v Hexton; Wilden v Luton Caribbean. **Division Two:** Harrod II v Sandy; Riseley v Ampthill Town III; Thurleigh II v Lidlington. **Division Three:** Sharnbrook/Bromham II v Langford.

www.ousevalleyphysio.co.uk

Claudia von Caron

PHYSIOTHERAPIST

- Back pain & sciatica
- Neck & shoulder pain
- Whiplash & headaches
- Sports injuries
- Work related disorders
- Repetitive strain
- Injuries to joints & soft tissues
- MS & stroke

Mrs Claudia von Caron MCSP, Chartered Physiotherapist

Ouse Valley Physiotherapy Practice
3 The Drive, Sharnbrook, Bedford MK44 1HU
claudia@ousevalleyphysio.co.uk

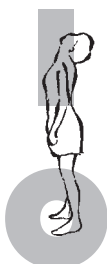
Call 01234 781777



BODY



HARMONY



SHARNBROOK FC MEMORIAL MATCH



The Legends clinched a narrow 3-2 win over the Old Boys in the Sharnbrook Memorial Match on 14th April. The match was staged in memory of stalwarts Mark Singleton and Nick Cook.

The match raised money for Parkinsons UK and Cancer Research UK.

SPECIAL SOUVENIR ISSUE ON THIS MATCH
www.grassrootspublications.co.uk
Click on Sharnbrook FC Memorial Match

SHARNBROOK BOWLS CLUB OPEN DAY



Sharnbrook Bowls Club welcomed potential new members at its Open Day on 6th May.

The Club has a full programme of matches catering for all standards including fixtures in the Bedford Bowls League, the Bedford Ladies Bowls League and the Over-60s League along with club and county competitions.

● *Coach Richard Beard explains 'the physics of a wood in motion' to a potential new member,*

MONDAY 6th MAY

HISTORIC DAY FOR THURLEIGH CRICKET CLUB

FIRST GAME IN THE NORTHAMPTONSHIRE LEAGUE



Thurleigh Cricket Club's first match in the Northamptonshire League also marked the debut at Keysoe Road of a digital scoring system. Supporters can now keep up to date with the score on the League website. Scorer Clive Franklin is pictured with umpire Tony Hancox. The picture on the right shows Thurleigh openers Chris Wood, left, and captain Richard Foot on this memorable day.



HISTORIC DAY FOR THURLEIGH CRICKET CLUB

FIRST GAME IN THE NORTHAMPTONSHIRE LEAGUE



Thurleigh marked their first game in the Northamptonshire League Division Five with a 32-run victory over Bugbrooke.

New captain Richard Foot lost the toss and Thurleigh were put into bat.

According to the scorebook, Foot faced Thurleigh's first ball in this competition - top

left picture. A record he will not want to be reminded about, Chris Wood was the first Yellow Cap wicket to fall in the Northants League.

Foot made the first half century and went on to make 69 as Thurleigh posted 232-7.

University student Sam Richardson held the innings together at the death with an

unbeaten 59. And keeping up the 'first' theme, Rob Pryor took the opening Thurleigh wicket in the Bugbrooke reply dismissing Chris Goodson.

Bugbrooke threatened with Ben Tompkins hitting 52 before being removed by Pryor, who took 4-37 from his 9.4 overs while Brody Willerton took 2-30 as the visitors made 200.

SATURDAY 27th APRIL



Soulbrook
Property Services

Extensions



Renovations



Carpentry & Joinery



Bathrooms



Kitchens

01234 782558

07731 818990

www.soulbrook.co.uk