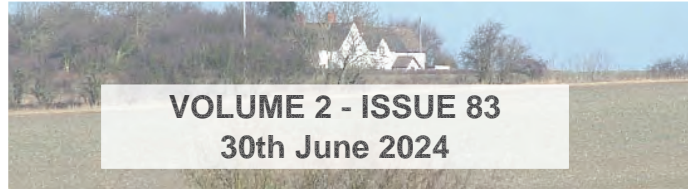


THE DAILY GRUNCH

SERVING VILLAGE COMMUNITIES IN NORTH BEDFORDSHIRE



Produced by Grassroots Publications
Previously The Rural Grunch
07725 812963

Email: dailygrunch@outlook.com

Web: www.grassrootspublications.co.uk

**BOLNHURST VINTAGE
AND COUNTRY FAYRE**

SEE PAGES 32-34



**BLETSOE COUNTRY FETE
AND HOEDOWN
SEE PAGES 18-21**

**THEATRE
COVERAGE**

SEE PAGES 40-46

**SPORTS
COVERAGE**

SEE PAGES 49-55

PAGE CHANGES TO THE ONLINE DAILY GRUNCH

To assist our readers we have expanded our Key Changes section.

This allows regular readers to see what has changed at a glance in the editions that they may have missed.

SEE RATE CARD ON PAGE 3

Front Cover: Team Solent Young Bikers perform their skills at the Bolnhurst Vintage and Country Fayre.

Pictures: Graham White

CONDITIONS OF ACCEPTANCE

Although every effort will be made to meet advertisers wishes, the publishers do not accept responsibility for inaccuracies in advertisements or in consequences arising, nor do they guarantee the insertion of any advertisement on a specified date, or in a specified section of the paper. Furthermore, the publishers do not accept any responsibility for one or more of a series of advertisements being omitted for any cause whatsoever. They reserve the right to amend or omit or reclassify or suspend any advertisement previously ordered without giving a reason or prior notice to the advertiser. No responsibility is accepted for the loss or damage to copy, or error in the printing. It is the responsibility of the advertiser to ensure conformity with the Trade Description Act 1968, Sex Discrimination Act 1975 and Business Advertisements (Disclosure Order 1977). All advertisements are accepted in good faith. Placing an order with THE DAILY GRUNCH will signify acceptance of the above conditions.

Artwork forming part or whole of any advertisement prepared by THE DAILY GRUNCH on behalf of any advertiser may not be used in any other publication whatever without permission of the publishers.

KEY CHANGES TO THE DAILY GRUNCH FROM THE LAST ISSUE

30th June: *Page 46, Page 52*

29th June: *Page 23*

28th June: *Page 27*

27th June: *Page 15*

26th June: *Page 36, Page 37, Page 38, Page 39, Page 45, Page 48, Page 52*

25th June: *Page 17, Page 49, Page 50, Page 51*

24th June: *Page 50*

23rd June: *Page 17*

22nd June: *Page 35*

21st June: *Page 23*

AS ALWAYS WE ENCOURAGE YOU TO SEND US YOUR NEWS AND DETAILS OF ANY EVENTS YOU MAY BE HOLDING.

Email us at

dailygrunch@outlook.com

Deadline: Approx two working days before publication - for example Friday = 10am Wednesday

WELCOME TO THE DAILY GRUNCH

It will be four years on 12th April since we launched the online Daily Grunch.

This replaced the traditional Rural Grunch, which we had published and printed since March 2009.

We made the decision to go online following the Covid 19 Lockdown that came into effect on 23rd March 2020.

After Covid 19, the UK has suffered a cost-of-living crisis and it is safe to say we would not have been able to continue the magazine in its traditional form due to the increase in prices for paper and print.

As indicated in its title, we are able to update the online magazine on a daily basis and we do this 300 times a year.

This allows us to give coverage of local community events almost immediately after they have taken place rather than wait up to 31 days, which was the case with the printed monthly issue.

The same applies with advertising as we can insert material almost as soon as we

receive the copy. The online magazine is also in colour, which makes our coverage of community events more attractive.

Our goal remains the same - supporting community events and small businesses.

You will have noticed on our access page - www.grassrootspublications.co.uk - that we have produced a number of supplements.

The Summer 2023 includes a record of community events during the first part of last year while the Autumn 2023 does likewise up to Christmas.

We are aiming to produce similar publications for 2024.

We have also set up a Business and Community Directory. Please contact us at dailygrunch@outlook.com for further information including rates for the Directory.

See below for The Daily Grunch Rate Card.

Graham White

RATE CARD

ADVERTISING PRICES

FROM 8th APRIL 2024

Full Page: 30p per issue

1/2 Page: 18p per issue

1/4 Page: 12p per issue

Community Rates: 50% Discount

Invoicing every 100 issues. 300 issues per annum.

All Prices ex-VAT

For further information and to place advertising: dailygrunch@outlook.com

AS ALWAYS WE ENCOURAGE YOU TO SEND US YOUR NEWS AND DETAILS OF ANY EVENTS YOU MAY BE HOLDING.

Email us at

grassrootspublications@btconnect.com
ruralgrunch@btconnect.com

Deadline: Approx two working days before publication - for example Friday = 10am Wednesday

TAKE A SHORT CUT BY SUE

Many people are now reading The Daily Grunch but for some it is a new experience.

For a few, it may be too many clicks or you cannot remember the name of the website.

There is a little trick:

Go to the www.grassrootspublications.co.uk Home Page where the link to The Daily Grunch is located. In the top right hand corner of this page you will see 'three vertical dots'. Click on these and you will see a list of options.

Choose 'Add to Home Screen' and you should have an icon for Grassroots Publications in the favourites area or something similar on your device. Then any time you want to access The Daily Grunch you only have to click on this icon to take you to the link.

If you want to find a specific article in The Daily Grunch try this



Ctrl + F to find the subject/word you are looking for. This avoids trying to find the elusive article.

For example: Open The Daily Grunch – Press **Ctrl + F** which will open a small box, Type in the box the topic/number you are looking for. Say for example - 'Riseley'.

You will find 16 entries in the 27th October.2020 edition.

Sue
www.renholdvillage.co.uk

NEW YEAR'S RESOLUTION

Why not try a walk with North Beds Ramblers?

We are a friendly group who walk on Saturdays:
Every Saturday afternoon, approx. 6 miles

Saturday mornings, twice monthly, 10 -12 miles
Just turn up wearing suitable footwear and clothing
Sorry only assistance dogs allowed



We walk in all weathers,
you may get wet and muddy!!

Bring refreshments
(and plenty of water in the summer)



Interested?

Find our programme on the Ramblers website <https://www.ramblers.org.uk/north-bedfordshire>
Facebook <https://www.facebook.com/groups/northbedsramblers>
Twitter @nb_ramblers

Walks are free but if you decide to walk with us regularly we would like you to join the Ramblers

The Ramblers' association is a registered charity (1093577) and a company limited by guarantee, (No.445892). Registered Office: 1 Clink Street, 3rd Floor, London. SE1 9DG

Collection Calendar

Please ensure that your bins are out for collection by 6am on your collection day. Missed collections must be reported within 48 hours of your scheduled collection. Visit www.bedford.gov.uk/recycling to report a missed collection.



Remember!

Garden waste collections are suspended from 1st December to 1st March.

December 2023 and January 2024 Date Changes

Recycling only

Mon 25 Dec	moves to	Sat 23 Dec
Tues 26 Dec	moves to	Weds 27 Dec
Weds 27 Dec	moves to	Thurs 28 Dec
Thurs 28 Dec	moves to	Fri 29 Dec
Fri 29 Dec	moves to	Sat 30 Dec

Rubbish only

Mon 1 Jan	moves to	Tues 2 Jan
Tues 2 Jan	moves to	Weds 3 Jan
Weds 3 Jan	moves to	Thurs 4 Jan
Thurs 4 Jan	moves to	Fri 5 Jan
Fri 5 Jan	moves to	Sat 6 Jan

Key

Red Outline =
Date Change

Orange =
Recycling Only

Purple =
Recycling and Garden

Grey =
General Rubbish

December 2023

M	T	W	T	F
				1
4	5	6	7	8
11	12	13	14	15
18	19	20	21	22
25	26	27	28	29

January 2024

M	T	W	T	F
1	2	3	4	5
8	9	10	11	12
15	16	17	18	19
22	23	24	25	26
29	30	31		

February 2024

M	T	W	T	F
			1	2
5	6	7	8	9
12	13	14	15	16
19	20	21	22	23
26	27	28	29	

March 2024

M	T	W	T	F
				1
4	5	6	7	8
11	12	13	14	15
18	19	20	21	22
25	26	27	28	29

April 2024

M	T	W	T	F
1	2	3	4	5
8	9	10	11	12
15	16	17	18	19
22	23	24	25	26
29	30			

May 2024

M	T	W	T	F
		1	2	3
6	7	8	9	10
13	14	15	16	17
20	21	22	23	24
27	28	29	30	31

June 2024

M	T	W	T	F
3	4	5	6	7
10	11	12	13	14
17	18	19	20	21
24	25	26	27	28

July 2024

M	T	W	T	F
1	2	3	4	5
8	9	10	11	12
15	16	17	18	19
22	23	24	25	26
29	30	31		

August 2024

M	T	W	T	F
			1	2
5	6	7	8	9
12	13	14	15	16
19	20	21	22	23
26	27	28	29	30

September 2024

M	T	W	T	F
2	3	4	5	6
9	10	11	12	13
16	17	18	19	20
23	24	25	26	27
30				

October 2024

M	T	W	T	F
	1	2	3	4
7	8	9	10	11
14	15	16	17	18
21	22	23	24	25
28	29	30	31	

November 2024

M	T	W	T	F
				1
4	5	6	7	8
11	12	13	14	15
18	19	20	21	22
25	26	27	28	29

GRUNCH OPINION

So we are in the middle of a General Election.

It is a time where you have to be careful on what you write in an opinion piece as you cannot show bias towards any one party.

This is difficult in the North East Bedfordshire constituency, where for the past few elections, there has been a significant majority for the Conservatives firstly for Alistair Burt then more recently Richard Fuller.

Recent by-elections in neighbouring constituencies, such as Mid Beds and Wellingborough, have suggested that the voting trend may have changed.

Also, we have a major issue in the area that could swing the vote and this is the routing of the proposed East-West Rail.

It is well known that the current MP Richard Fuller is opposed to the route and has generally questioned the viability of the project but his Conservative & Unionist Party are in favour of this railway, between Cambridge and Oxford, to go ahead.

I cannot comment on the other candidates because I have not seen them or received any voting material about them. And at the time of writing this piece, we are midway through the campaigning period.

There, though, has been some activity, so I have been told with one candidate having visited Ravensden even though this was not widely advertised.

And at the same time, I was told of the above, there was a comment that another hopeful was still to make an appearance in the constituency. This, maybe, because this particular candidate is from Hounslow, which is worryingly close to Bedford.

From personal experience, I know that Bedford and Bedford are easily confused but the latter is a London suburb.

Maybe this rival of Mr Fuller is actually canvassing in North East BedFONT.....

Graham White

DAVID JAMES

WWW.DAVIDJAMESKITCHENS.CO.UK



We are a local manufacturer of beautiful kitchens. We sell direct to save you money. The factory showroom has an extensive display of different styles.



**SAVINGS ON ALL KITCHENS
& Up To 25% Off Top Brand
Appliances**

**PULLOXHILL BEDS MK45 5EU
01525 722230**





Treespecific^{Ltd}

tree management

A comprehensive range of tree services from a local dedicated tree surgeon with twenty years experience within the tree industry

- ✦ All aspects of Tree Maintenance and Tree Care
- ✦ Tree Felling
- ✦ Crown Reduction/Thinning
- ✦ Sectional Dismantling
- ✦ Hedges Reduced and Trimmed
- ✦ Dead Wood Removed
- ✦ Fruit Tree Pruning
- ✦ Tree Planting
- ✦ Fully insured and Skilled Arborist
- ✦ Member of the Royal Forestry Society

Contact us today for a free quote

Telephone: **01234 828895**

Mobile: **07949 368374**

Email: **simonowen@treespecific.co.uk**

www.treespecific.co.uk

FOCUS ON THE VILLAGER BUS

The Villager Bus is run by volunteers for the North Bedfordshire communities. There are scheduled routes each week and it can be hired for outings.

The new bus can take up to 16 passengers including space for one wheelchair user. It has a low floor for easy access and a wheelchair ramp, as well as air conditioning, WiFi and phone charging points.

The Villager Bus provides regular bus services from the North Bedfordshire villages to various destinations, including Olney, Bedford, Milton Keynes, Rushden Lakes and St Ives. Concessionary Bus Passes can be used as well as payment by card or cash. Currently the cost of a single journey to any destination is only £2.

The purchase of the new bus was made possible with the generous support of various sponsors including Bedford Borough Council, the Harpur Trust, The Gale Family Charity Trust, Felmersham and Radwell Community Trust, Wixamtree Trust, The Connolly Foundation and the Christopher H R Reeves Trust.



● The brand new Villager Bus.

The Villager Bus is a service for all, helping everyone to get out to town centres and local supermarkets. It has been run entirely by volunteers since 1987 with the aim of improving the lives of those in the North Beds villages.

The service supports many older people and those with mobility problems who may find it difficult to travel on their own. It's a great opportunity to socialise too! We currently deliver between 250 and 300 passenger journeys a month as well as frequent community hires.

● The Villager Bus (Sharnbrook) committee member Andrew Gell welcomes a passenger for a local service.



FOCUS ON THE VILLAGER BUS

Riseley/Thurleigh – Sainsbury's (Bedford, Clapham Road)

Route VL12 - 1st & 3rd Wednesday of each month		
	Out	Return
Riseley, High St. (Gold St)	0930	1135
Bletsoe, Church	0940	1130
Milton Ernest, Opp Queens Head	0945	1125
Sainsbury's	0955	1110
Thurleigh, The Close	1010	1225
Milton Ernest, Marsh Lane	1020	1215
Sainsbury's	1040	1200

Sharnbrook – Riseley - Melchbourne – Rushden - Waitrose/ Rushden Lakes

Route VL13 - 2nd Monday of each month		
	Out	Return
Sharnbrook, Lodge Rd/Loring Rd	0855	1308
Sharnbrook, Opp Nisa Store	0858	1305
Bletsoe, Opp Church	0903 RR	1300
Thurleigh, The Close	0918 RR	1255
Riseley, High St (Gold St)	0930	1243
Riseley, Primary School	0933	1240
Swineshead, Church	0936	1237
Upper Dean	0943 RR	1230
Melchbourne	0948 RR	1225
Yelden, High Street /Spring Lane	0953	1220
Newton Bromswold Village	0957	1216
Rushden, College Street	1003 RR	1210
Rushden, Waitrose/Rushden Lakes	1012 RR	1201

Felmersham - Sharnbrook - Riseley - Kimbolton - Huntingdon - St Ives

Route VL14 - 3rd Monday of each month			
	Out		Return
Felmersham, The Sun	0840	RR	1557
Sharnbrook, Lodge Rd/Loring Rd	0850		1550
Sharnbrook, Opp Nisa Store	0900		1547
Bletsoe, A6 Bus Stop	0905	RR	1542
Milton Ernest	0907	RR	1540
Thurleigh, The Close	0905	RR	1535
Riseley, High St (Gold St)	0917		1523
Riseley, Primary School	0920		1520
Swineshead, Church	0923		1517
Melchbourne Village	0929	RR	1511
Upper Dean, High Street	0933		1507
Shelton, Bus Stop	0937	RR	1503
Lower Dean, High Street	0942		1458
Tilbrook, White Horse	0945		1455
Kimbolton, Post Office	0948		1452
Stonely, Main Road	0950		1450
Gt. Staughton, Snooty Tavern	0953		1447
Dillington, Crossroads	0954		1446
Perry, Opp Wheatsheaf	0956		1444
Brampton, Thrapston Road	1007		1433
Huntingdon, Bus Station	1010		1430
St Ives, Bus Station	1025		1415

Sharnbrook - Harrold - Turvey - Milton Keynes

Route VL15 - 1st Tuesday of each month		
	Out	Return
Sharnbrook, Swan	0930	1331
Sharnbrook, Lodge & Loring Rd	0932	1329
Odell, The Bell	0936	1325
Harrold, Centre	0943	1318
Carlton, The Fox, via The Moor	0950	1311
Turvey, The Green	0958	1303
Newton Blossomville, Old Mill	1004	1257
Clifton Reynes, Robin Hood	1011 RR	1250
Milton Keynes, Shop Centre	1030	1230



The Villager Minibus



The Villager is a friendly bus service that runs through many North Bedfordshire villages going to Milton Keynes, Olney, Rushden Lakes, St Ives and Sainsbury's in Bedford. All Concession Pass holders travel free and children travel half price.

Do support your local community bus service run and driven by volunteers.

Thurleigh - Harrold - Lavendon - Olney - Milton Keynes

Route VL4 - 2nd Tuesday of each month		
	Out	Return
Thurleigh, The Close	0900 RR	1322
Milton Ernest, Queens Head	0905 RR	1317
Radwell Village	0907 RR	1315
Felmersham, Sun	0910	1313
Carlton, Crossroads	0918	1307
Carlton, The Fox	0920	1305
Harrold, Centre	0925	1300
Lavendon, Cross	0935	1250
Olney, Market Place	0940	1245
Milton Keynes, Marks & Spencer	0958	1230
Milton Keynes, The Point	1000	1230

24 April 2023

Passengers are strongly advised to book their journeys, apart from the Olney and Sainsbury's runs, using our website.
www.sharnbrookvillagerminibus.co.uk
 Or phone: 01234 708191

Where you see RR in the timetable, this means **Rider Request**. The bus calls for passengers on request only, ie where booked.

Sharnbrook - Felmersham - Odell - Harrold - Lavendon - Olney Market

Route VL5A - Every Thursday		
	Out	Return
Sharnbrook, The Swan	0910	1148
Sharnbrook, Lodge Rd/Loring Rd	0912	1146
Felmersham, The Sun	0915 RR	1143
Odell, Bell	0920	1138
Harrold, Green	0924	1134
Lavendon, Cross	0932	1126
Olney, Market Place	0938	1120

Clapham-Oakley-Stevington-Turvey-Milton Keynes

Route VL6 - 4th Tuesday of each month		
	Out	Return
Clapham, Community Centre	0900	1330
Oakley, High Street	0905	1325
Oakley, Memorial	0907	1323
Pavenham, Close Road	0910	1320
Pavenham, Weavers Lane	0913	1317
Stevington, West End	0918	1312
Stevington, Cross	0920	1310
Bromham, Grange Lane	0925	1305
Turvey, Station Road	0930	1303
Turvey, The Green	0932	1300
Newton Blossomville, Old Mill	0938	1253
Clifton Reynes, Robin Hood	0945 RR	1243
Milton Keynes, Marks & Spencer	0958	1230
Milton Keynes, The Point	1000	1230

Sharnbrook/Odell - Harrold - Sainsbury's (Bedford, Clapham Road)

Route VL11 - 2nd & 4th Wednesdays of each month		
	Out	Return
Sharnbrook, Opp Fordham Arms	0930	1230
Sharnbrook Court	0935	1225
Sharnbrook, The Swan	0937	1223
Sharnbrook, Lodge Rd/Loring Rd	0940	1220
Odell, The Bell	0943	1217
Harrold, Centre	0948	1212
Carlton, The Fox	0954	1206
Pavenham	1003	1157
Clapham	1015	1145
Sainsbury's	1020	1140

Our bus is available for community private hire. Our website has more information:

www.sharnbrookvillagerminibus.co.uk

or e-mail: villagerbus.sharnbrook@gmail.com

If you are interested in becoming one of our volunteer drivers do phone us for an informal chat without any obligation on 01234 708191.



Carlton - Stevington - Bromham - Turvey - Cold Brayfield - Olney Market

Route VL5B - Every Thursday		
	Out	Return
Carlton, Fox	1003	1243
Stevington, West End	1008	1238
Stevington, Cross	1010	1236
Stevington, Alms Houses	1012	1234
Bromham, Grange Lane	1017	1229
Turvey, Station Road	1023	1223
Turvey, Jacks Lane	1025	1221
Turvey, Green	1026	1220
Cold Brayfield	1028	1218
Olney, Market Place	1036	1210

Melchbourne-Riseley-Sharnbrook-Olney-Milton Keynes

Route VL7 - 3rd Tuesday of each month		
	Out	Return
Melchbourne, Village	0850 RR	1335
Swineshead, Church	0855 RR	1330
Riseley, Primary School	0900 RR	1326
Riseley, High St (Gold St)	0903 RR	1323
Bletsoe, Church	0909 RR	1317
Sharnbrook, Swan	0916	1310
Sharnbrook, Lodge Rd/Loring Rd	0918	1308
Odell, The Bell	0921	1305
Harrold, Centre	0926	1300
Lavendon, Cross	0931	1255
Olney, Market Place	0936	1250
Milton Keynes, Marks & Spencer	0954	1230
Milton Keynes, The Point	0956	1230

80th ANNIVERSARY OF D-DAY KEYSOE REMEMBERS



Keysoe remembered those who were involved in the D-Day landings on 6th June 1944 at a special service at the Memorial at Mill Hill in the village. This was attended by the Mayor Cllr Tom Wootton. The service was followed by a fish and chip supper and the lighting of the beacon in Church Road.

PICTURES BY MICK WATSON

80th ANNIVERSARY OF D-DAY KEYSOE REMEMBERS



PICTURES BY MICK WATSON

Lane &

HOLMES

Est. 1985

Sales, Lettings & Auctions



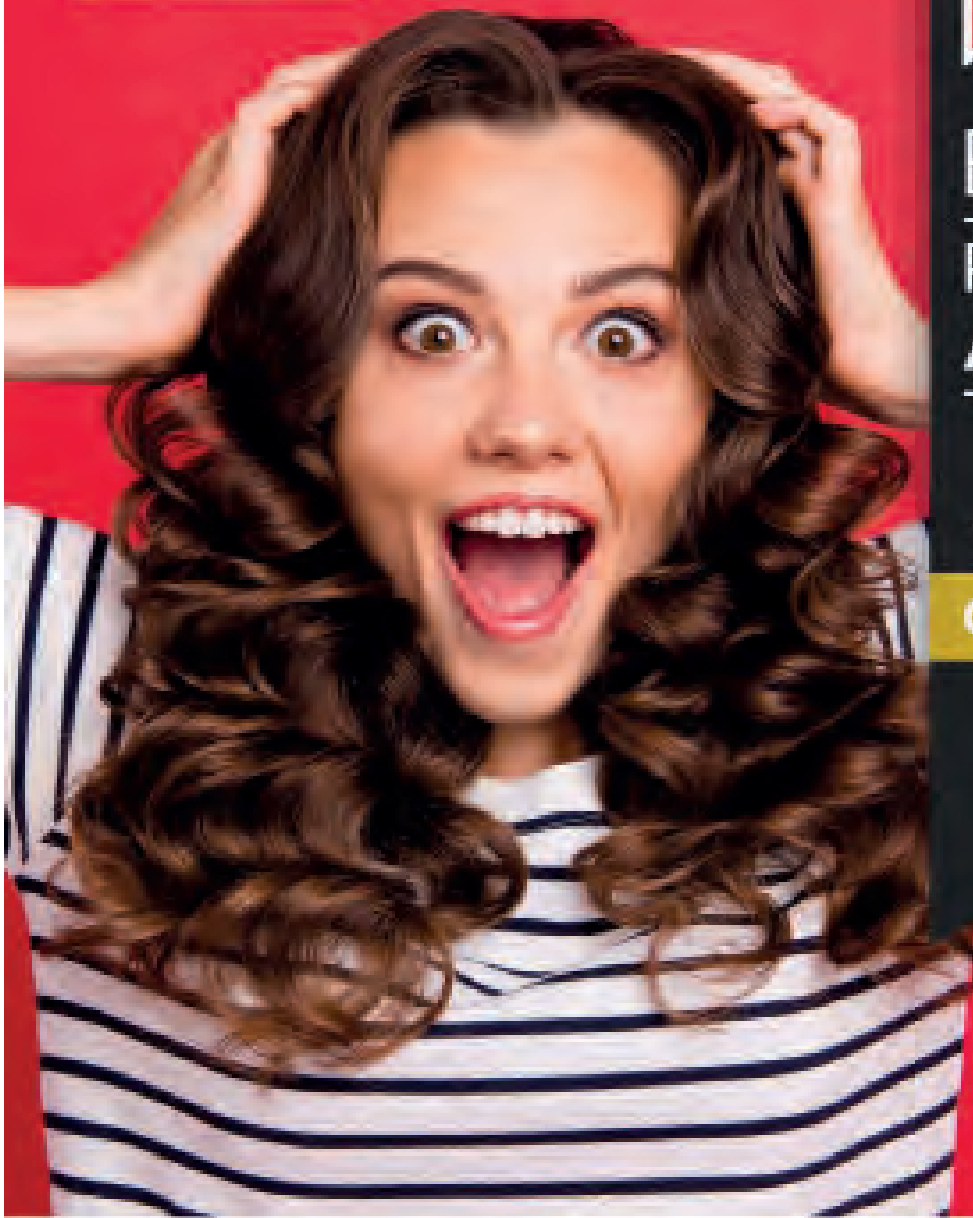
BRITISH
PROPERTY
AWARDS

2021



GOLD WINNER

ESTATE AGENT
IN BEDFORD



Have you seen... We **won!**
For a winning service, **talk to us.**

01234 327744 | sales@laneandholmes.co.uk | laneandholmes.co.uk

GIDDY GOAT CAFE RISELEY CRAFT FAYRE



The Giddy Goat Cafe at Riseley organised another excellent craft fayre on 1st June.

There were a wide range of stalls both in the Community Hub and also in the outdoor space adjacent to the Cafe where some excellent refreshments were served.

This has become a regular event on the fayre calendar.

SATURDAY 1st JUNE

STABLES BOLNHURST COFFEE SHOP



The car park was full and the coffee shop overflowed into the garden. It was a perfect June afternoon at The Stables Coffee Shop in Bolnhurst.

As a bonus, John was selling his plants but a highlight for many were the delicious home made cakes that were on sale. And the coffee was not bad either.

SATURDAY 1st JUNE

KEYSOE AND BOLNHURST OPEN GARDENS



Now that was a challenge for some to try and cover all the displays at the Keysoe & Bolnhurst Open Gardens.

The registration points were at the two extremes - The Chequers in Keysoe and The Old School in Bolnhurst.

In between, there were some fine gardens and fortunately some refreshment points on a hot afternoon, including the legendary Pump Cottage.

SATURDAY 22nd JUNE

GRUNCH NEWS



● Several walkers took part on a four-mile walk around Riseley on Sunday 9th June. The route took in Worley Woods. After the event, walkers had the chance to take part in a free Community Lunch , which was a tasty roast dinner. It is hoped the walk will again become a regular event while the Community Lunch at the Hub is becoming increasingly popular.



Andrew Blair

Professional Carpet and Upholstery Cleaning

Phone or Whatsapp 07867499792

e-mail arblair64@yahoo.co.uk

website

<https://andrewblairprofessionalcarpetandupholsterycleaning.com>

PLEASE SUPPORT OUR ADVERTISERS

FOR YOUR DIARY

Saturday 29th June: North Beds Ramblers Walk - 1.30pm at Woburn. Park Street Car Park opposite St Mary's Church. Route goes via the diverted path through Woburn Safari Park and returns via the Deer Park. For further details go to www.ramblers.org.uk/north-bedfordshire.

Saturday 29th June: Milton Ernest Primary School. 1.30pm. Milton Ernest Fete. Plenty of family entertainment including a Grand Raffle.

Saturday 29th June and Sunday 30th June: St Mary's Church, Yelden, Yelden Village Art Show. Part of the Yelden Strawberry Fayre

Sunday 30th June: Yelden Spring Lane and Village Hall. 2pm-5pm. Yelden Strawberry Fayre. Plenty of stalls in Spring Lane and maybe strawberries in a marquee near the Village Hall.

Saturday 6th July: Carlton Village Hall. 11am-3pm. Summer Fair. Artisan Stalls, Novelty Photobooth, Fair Games. Raising funds for Carlton Village Hall and Carlton School PTA.

Saturday 6th July: Yelden Village Hall at 6pm onwards. Barn Dance. Tickets £13 Adults £5 Child. Details and Tickets: Ann Franklin 07717 755868.

Saturday 6th July: Lodge Farm, Little Staughton. 3pm to late. Tiggy's Trust Music Festival. Tickets from £20 In aid of Bedford Disabled Horse Riding Association. For further details search web for Tiggy's Trust Music Festival.

Saturday 6th July: Coffee Shop, Stables Christian Centre, Bolnhurst. 2pm-4:30pm
Homemade cakes with tea, coffee in a rural setting. On sale: plants, preserves, and craft items. Facebook: [stableschristiancentre](https://www.facebook.com/stableschristiancentre)

Saturday 6th July: Newton Bromswold at 2pm. Newton Bromswold Village Fete. Rushden Mission Band and usual variety of stalls and games. Plus afternoon teas

Saturday 13th July: Renhold Primary School, Church End, Renhold. 11.30am-3pm, Renhold Primary School Fete - 'Something for Summer' theme.

Sunday 14th July: Oak Farm, Upper Dean from 9.30am. Oakley Hunt Open Horse Show. Various classes.

Saturday 20th and Sunday 21st July: Various locations including The Embankment. All Day. The Bedford River Festival. Entertainment for all the family. Live music. Events on the river including Dragon Boat Racing. Plus Sports Village.

Saturday 20th July: Barn in Newton Bromswold at 7pm. Barn Dance with band Kelly's Eye. Tickets - Adults £12.50 and Children £5. Available in June on 07703 476689. Proceeds to Friends of Newton Church.

Every Sunday: Great Barford Village Hall at 10am. Great Barford Run Together. Running for fun for all standards including novices.

Every Thursday: Riseley Village Hall 3.30-5pm. Riseley Bus Stop Cafe for School Years 7-13 During school term.

First Friday of the Month: Keysoe Village Hall at 7.30pm. Bar Night

Every Saturday: There may be cricket matches at Riseley, Sharnbrook and Thurleigh

FOR YOUR DIARY

£1 per insertion per 30 days for a max 30 word insertion, cheque payable to Grassroots Publications, may be sent to Grassroots Publications, 2, Strawberry Hill Cottages, Knotting Green, Bedford, MK44 1AB Use this section to advertise any community or social event that may be coming up in the forthcoming months. It can include sports events. We reserve the right to omit any dates if payment is not made. If in doubt feel free to contact us on 07725 812963 or email: dailygrunch@outlook.com. Price includes VAT

BLETSOE COUNTRY FETE



The heavens opened at the start but the Bletsoe Country Fete went ahead as scheduled.

Throughout the afternoon, those attending looked up at the skies wondering if there would be another deluge.

Fortunately, it turned out to be a reasonably pleasant afternoon and there was plenty of entertainment for all the family.

Smashing plates and welly-wanging were particularly popular and there were clothing bargains at the Bletsoe Boutique. Plus, plenty of vintage vehicles were scattered around the site.

And BBC Radio Two legend Alan Dedicoat, top right, opened the proceedings and commented on the Dog Show.

**BLETSOE FETE AND HOEDOWN
COVERAGE ON PAGES 18-21**

SATURDAY 15th JUNE

BLETSOE COUNTRY FETE



**BLETSOE FETE AND HOEDOWN
COVERAGE ON PAGES 18-21**

SATURDAY 15th JUNE

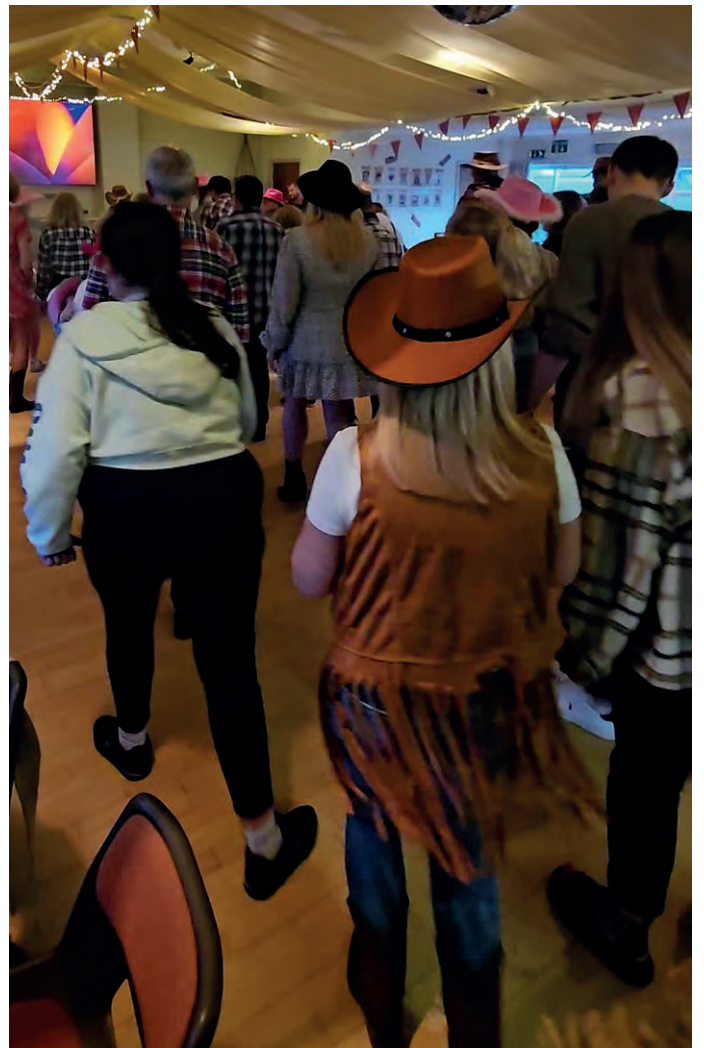
BLETSOE COUNTRY FETE



**BLETSOE FETE AND HOEDOWN
COVERAGE ON PAGES 18-21**

SATURDAY 15th JUNE

BLETSOE HOEDOWN



After the Bletsoe Country Fete in the afternoon, there was a Hoedown in the evening.

With a distinct Mexican theme, there was a chilli con carne supper followed by some entertaining line dancing. And if you did not like someone you could put them in the noose.

**BLETSOE FETE AND HOEDOWN
COVERAGE ON PAGES 18-21**

SATURDAY 15th JUNE



SARTORI WELLNESS

Therapeutic Massage

Feeling tired, stressed, stiff aching muscles, do you work on your feet all day?
Come unwind and relax with a therapeutic massage.

Choose from a Thai Foot Massage, Indian Head Massage or Tension Relief Massage.
Fully qualified and insured. Ladies Only. Based Rushden Northamptonshire

Contact Mary To Book

Tel: 07464 100195

Email: sartoriwellness@gmail.com

www.facebook.com/sartoriwellness



**SARTORI
WELLNESS**

PLEASE SUPPORT OUR ADVERTISERS

GRUNCH NEWS

□ Tiggy's Trust Music Festival takes place at Lodge Farm, Little Staughton on Saturday 6th July from 3pm. Tiggy's Trust was set up in memory of Tiggy Hancock, who lost her life in a horse riding accident. The Trust this year are supporting the Bedford Disabled Horse Riding Association. The special event will be covered so there should not be any weather issues. Artists during the afternoon and evening include Finn Mungo, Ella England, Angie Collins, Candy Twist, The NeuMonarchs, Miguel Oliveres and The Rock Cartel.

□ Keysoe International will be holding a Family Summer Event on Sunday 7th July from 10am to 4pm. The day will include Shetland Pony racing and Shire Horse parades. There will also be an arts and craft marquee.

□ The Puddleducks Nursery and Pre-School are holding a Summer Fete on Saturday 13th July from 11am-2pm. There will be entertainment for all the family. Entry will be free.



● Colmworth Village Hall hosted a successful Italian Evening on 8th June. These locals were certainly enjoying the delights that were on offer.

Picture: Colmworth and Wilden Facebook



Telephone 01234 709163
or 07899 016129



Qualified Chimney Sweep



- Riseley based professional Chimney Sweep.
- Fully qualified member of The Guild of Master Sweepers.
- Police CRB checked and £2 million liability insurance.
- Service reports that are recognised by all insurance companies.
- Specialist equipment used for Woodburning Stoves & Lined Chimneys.
- Recommended by local Stove / Fireplace installers.
- CCTV inspections and reports.

Contact Tony, your local Chimney Sweep.

www.black-horse-chimney-sweep.co.uk

e-mail tnav59@btinternet.com

FOCUS ON THE ST NEOTS FOLK CLUB

Tuesday 11th June

St Neots Folk Club

Live Music

8pm-10.30pm

The Priory Centre

St Neots

Causton and Walker - Duo.

Tuesday 18th June

St Neots Folk Club

Live Music

8pm-10.30pm

The Priory Centre

St Neots

Fake Thackray. A celebration of Jake Thackray.

Tuesday 25th June

St Neots Folk Club

Live Music

8pm-10.30pm

The Priory Centre

St Neots

Round the Room. Performers and audience welcome.



● The legendary Jake Thackray, who passed away in 2002, will be remembered at St Neots Folk Club on 18th June.

Tuesday 2nd July

St Neots Folk Club

Live Music

8pm-10.30pm

The Priory Centre

St Neots

Open stage featuring Ragged Staff, Luke Giles, Christopher Crompton and Tuesday Night Tea Club.



● Causton and Walker are performing at St Neots Folk Club on 11th June.

**FOLK MUSIC EVERY
TUESDAY AT
THE PRIORY CENTRE**

www.stneotsfolkclub.co.uk

NEWTON BROMSWOLD OPEN GARDENS



Newton Bromswold held a successful Open Gardens event on Sunday 9th June.

Several houses in the village opened their gates to allow people to browse some wonderful gardens, large and small.

There were some outstanding features such as a mini-waterfall and a fountain.

And one even had a magnificent view of the nearby St Peter's Church.

After the walk around the gardens, refreshments were available in the village hall including some delicious cakes.

SUNDAY 9th JUNE



**93A High Street, Rushden
NN10 0NZ**

01933 350866

app.timbrownsbutchers.com

enquiries@tebrownbutchers.co.uk

**Beef, Lamb, Pork, Chickens, Sausages, Bacon
and so much more**



FOCUS ON ROYAL OAK CARLTON



The Royal Oak, Carlton celebrated its first anniversary under new ownership with a special party, on 22nd June

Live musical entertainment was provided during the afternoon and evening.

There was also entertainment for all the family while street-style food was served.



Bedford Borough Council - Rural Bulky Skips Placements 2024						
Village	Date	Start	Finish	Location 1	Location 2	Location 3
Bromham	11 May 2024	08:00	12:30	Village Hall Car Park (08:00-12:30)		
Baldwinsham	11 May 2024	13:00	16:00	Baldwinsham Pavilion (13:00-16:00)		
Clapham	11 May 2024	08:00	11:00	Tarnwood Road (8:00-11:00)		
Oakley	11 May 2024	11:30	15:30	Raynes Drive (11:30-15:30)		
Whitead	18 May 2024	08:00	10:00	Lay-by, Bedford Road near the Recycling Banks (08:00-10:00)		
Wixams	18 May 2024	10:15	12:15	Dane Lane (10:15-12:15)		
Elstow	18 May 2024	13:00	15:30	Abbeyfields, Layby outside Elstow Primary School (13:00-15:30)		
Wootton	18 May 2024	08:00	12:00	The Barn Road (08:00-12:00)		
Great Denham	18 May 2024	13:00	15:30	Great Denham, near First Roundabout (13:00-15:30)		
Turvey	25 May 2024	08:00	10:15	Turvey Football Club- Grove road (08:00-09:00)	Station End (09:15 - 10:15)	
Stagsden	25 May 2024	10:30	12:00	Wick End Junction Main Road (10:30-12:00)		
Carlton & Chillington	25 May 2024	08:00	10:00	Entrance to Village Hall (08:00-10:00)		
Pavenham	25 May 2024	10:30	12:00	The Bury (10:30-12:00)		
Stavington	25 May 2024	13:00	15:00	Playing Fields (13:00-15:00)		
Cotton End & Shortstow	08 June 2024	08:00	15:30	Layby on Wood Lane, Cotton End (08:00-12:00)	Beacons Square, Shortstow (12:45-15:30)	
Sharnbrook	08 June 2024	08:00	11:30	Station Road (Top End) (08:00-09:30)	School Approach (09:45 - 11:30)	
Bletsoe	08 June 2024	11:45	13:45	School House Layby (11:45-13:45)		
Harrold	08 June 2024	14:00	15:00	Peaches Close (14:00-15:00)		
Great Barford	15 June 2024	09:30	12:00	Village Hall Car Park, Fisher Close (9:30-10:30)	Pym's Close (10:45-12:00)	
Ravenhill	15 June 2024	08:00	09:00	Layby outside 3-6 Wilton Road (8:00-9:00)		
Ravenoden	15 June 2024	13:00	15:00	Adjacent to the Horse and Jockey Pub and Vicarage Close Junction (13:00-15:00)		
Babburgh & Keysoe	15 June 2024	08:00	10:00	Village Hall Car Park, Keysoe Road West (8:00-10:00)		
Rosely	15 June 2024	10:30	12:45	Village Hall Car Park, Gold Street (10:30-12:45)		
Oslet	15 June 2024	13:15	14:30	Village Green near The Bell Pub (13:15-14:30)		
Little Barford	22 June 2024	08:30	09:30	Adjacent to School (08:30-9:30)		
Wyboston, Chawston & Coltedon	22 June 2024	10:00	12:00	Village Hall, Wyboston (10:00-12:00)		
Raxton	22 June 2024	13:00	14:30	Persh Hall Car Park (13:00-14:30)		
Knottling & Southrop	03 August 2024	08:00	10:30	Knottling Green (08:00-09:00)	Bouldrop, near The Green (09:30-10:30)	
Milton Ernest	03 August 2024	11:00	12:30	Village Hall (11:00-12:30)		
Thorleigh	03 August 2024	13:30	15:30	Layby adjacent to Numbers 3&5 The Close (13:30-15:30)		
Fettersham & Radwell	03 August 2024	08:00	12:00	The Green, Radwell (8:00-10:00)	Marmitts Close, Fettersham (10:30-12:00)	
Widley	03 August 2024	13:00	15:30	The Victoria Arms PH, adjacent to The Green (13:00-15:30)		
Podington	10 August 2024	08:30	12:00	Humberston Close (08:30-12:00)		
Wymington	10 August 2024	13:00	15:00	Manorial Hall, Car Park (13:00-15:00)		
Little Staughton	10 August 2024	08:00	10:00	Grays Grove (08:00-10:00)		
Colworth	10 August 2024	10:30	15:00	Channels End Road (10:30-12:00)	Little Staughton Road (13:00-15:00)	
Kempston Rural	17 August 2024	08:00	10:00	Ridge Road (08:00-10:00)		
Stewartby	17 August 2024	10:30	15:30	Alexander Close (10:30-12:30)	Pilgrimage Road / Magno Avenue Junction (13:00-13:45)	Kin Drive (14:00-15:30)
Cople	17 August 2024	08:00	12:00	Junction of Rye Crescent & Willington Road (08:00-10:00)	Village Hall, Grange Lane, Cople (10:30-12:00)	
Cardington	17 August 2024	13:00	15:30	Pleasant Place (13:00-15:30)		
Willington	24 August 2024	08:00	09:45	Village Hall Car Park (8:00-9:45)		
Staploe, Duloe & Honeydon	24 August 2024	10:15	15:30	Entrance to Woodhouse Lane, Duloe (10:15-12:00)	Entrance to Falls Farmyard, Staploe (13:00-14:00)	Rear Driveway of 8 Chapel Close, Honeydon (14:30 - 15:30)
Perdenhall	24 August 2024	08:00	09:30	Village Hall (08:00-9:30)		
Dean & Shelton	24 August 2024	10:00	15:30	East of Bridge, Lower Dean (10:00-11:00)	Top of Shey Lane / High Street, Upper Dean (11:30-12:30)	Near Triangle, Shelton (13:30-15:30)
Swineshead	24 August 2024	08:00	10:00	Outside Village Hall (08:00-10:00)		
Matchbourne & Yelden	24 August 2024	10:30	15:00	Village Hall Car Park, Matchbourne (10:30-12:00)	Bottom Of Church Lane, Yelden (13:00-15:00)	

ODELL FETE



The prospective Conservative & Unionist Party candidate for North East Bedfordshire Richard Fuller opened the Odell Fete.

A family dog's show was a highlight of the afternoon's entertainment in the main ring.

Popular group Freddie's Barnet provided a repertoire of their songs while many enjoyed the various stalls and fun games.

The bar ensured there was plenty of liquid refreshment on a warm afternoon.

The Odell Fete continues to be a successful June event.

SATURDAY 8th JUNE

80th ANNIVERSARY OF D-DAY MILTON ERNEST REMEMBERS

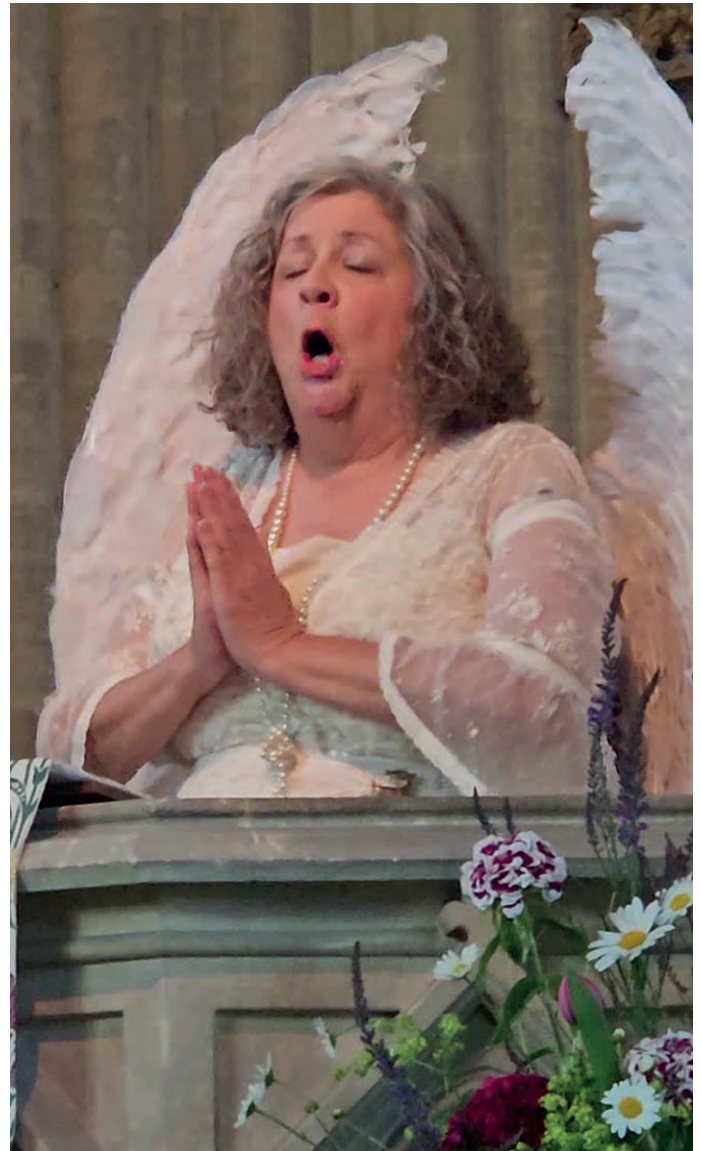


The Bedford Mainline Big Band were the main entertainment at the 80th Anniversary D-Day event at the Queen's Head pub at Milton Ernest.

Food and refreshments were provided by the pub while some dressed up for the occasion.

SATURDAY 8th JUNE

FAREWELL TO ALAN AND BRIDGET



Dup Bridget Peirson-Davis and Alan Mackenzie performed their final concert before emigrating to Spain later this month.

They were joined by Ouse Valley Singers for the special event at St Mary's Church, Felmersham on 8th June.

Bridget performed an extract from Lady Florence, written by Alan, for which she received an audience award at the 2021 BedFringe Festival.

The Ouse Valley Singers performed a wide variety of music including several Andrew Lloyd-Webber numbers.



ALSO SEE PAGE 31

SATURDAY 8th JUNE

FAREWELL TO ALAN AND BRIDGET



ALSO SEE PAGE 30

SATURDAY 8th JUNE

BOLNHURST VINTAGE AND COUNTRY FAYRE



A highlight of the Bolnhurst Vintage and Country Fayre was the motorbike display by the youngsters of Hampshire-based Team Solent.

They performed a series of stunts, which included riding through the ring of fire.

Other main ring events featured parades of vintage vehicles and shire horses. Visitors also had the chance to enjoy the various stalls and refreshment marquees.

SATURDAY 15th and SUNDAY 16th JUNE

BOLNHURST VINTAGE AND COUNTRY FAYRE



SATURDAY 15th and SUNDAY 16th JUNE

BOLNHURST VINTAGE AND COUNTRY FAYRE



Youngsters of Team Solent Motorbike Team performing at the Bolnhurst Vintage and Country Fayre.

SATURDAY 15th and SUNDAY 16th JUNE

GRUNCH NEWS

□ The Bedford River Festival takes place this year on the weekend of 20th and 21st July. Again it will be a community event which is free to attend. There will be something for everyone, including live entertainment and activities. The highlights will be a fun fair, raft and dragon boat races along with a sports island. The event will be focussed in several areas of Bedford including The Embankment, Russell Park and St Mary's Gardens. There will be a theme of 'Your Favourite Places in Bedford' at the Festival Community Art Project.

□ A Barn Dance takes place on Saturday 6th July at Yelden Village Hall. The event is from 6pm onwards. Tickets are £13 for adults and £5 for children and they are available from Ann Franklin 07717 755868.

□ Renhold Primary School are holding their annual Summer Fete on Saturday 13th July from 11.30am to 3pm. The theme this year is 'Something for Summer'. The highlight last year was the lady on stilts. Will she return?



The Yelden Strawberry Fayre takes place on Sunday 30th June from 2pm. Most of the entertainment will be in the gardens of Spring Lane and also in the grounds of Yelden Village Hall. There is also an Art Festival at St Mary's Church on both the Saturday 29th and the Sunday.

BRIDGET'S COCKTAIL COLUMN



TEQUILS MANHATTAN

Ingredients and Method

Place ice in a stirring glass.

Add 2 splashes of Angostura bitters

¾ fluid oz sweet vermouth

1½ fluid oz tequila (blanco)

Mix together in the stirring glass and strain into iced cocktail glass..



Thanks to Star Trek actor Casey Biggs

COLMWORTH OPEN GARDENS



A highlight of the Colmworth Open Garden event on Sunday 23rd June was the fascinating small holding, which included geese and goats along with a wide range of fruit and vegetables.

Visitors were also able to visit a wide range of gardens throughout the village including several in Channells End.

A popular spot was the attractive area close to St Denys Church.

Those attending were also treated to a fine array of refreshments at Colmworth Village Hall.

Coverage on Pages 36-37

SUNDAY 23rd JUNE

COLMWORTH OPEN GARDENS



Coverage on Pages 36-37

SUNDAY 23rd JUNE

GRUNCH RECIPES

OUR FAVOURITES

Lamb Tikka Samosa BBC Good Food Team

2tsp olive oil plus 100ml for brushing
400g lean lamb mince
4tbsp tikka paste
1 large onion, grated, excess juice squeezed out
1 large carrot peeled and grated
4tsp dried mint
2tbsp mango chutney plus extra to serve
200g frozen peas
270g pack filo pastry - 6 sheets
Leaf salad and raita to serve

In a large, wide pan, heat 1tsp oil. Season the lamb well and fry until browned all over.

Add the tikka paste to the pan and fry for a further two minutes until fragrant. Add the onion and carrot with the remaining 1tsp oil and fry for five minutes until the veg has softened.

Tip into a large bowl and mix with the mint, chutney and frozen peas. Leave to cool.

Spread out a sheet of filo with a short end towards you. Brush with oil all over. Fold each long side into the centre by 5cms so you have a long, narrow piece of filo.

Add about 130g of mixture to the top left of the strip and fold the top right corner of the filo to make a triangle. Then fold from the left and then from the right to complete the samosa shape. Usually three folds are necessary.

Transfer to a baking tray lined with baking parchment and if freezing wrap in cling film and place in freezer. Use within three months. Repeat with other filo sheets.

Heat oven to 200°C. Cook the samosas in the middle of the oven for 35-40 minutes, turning over halfway through cooking, until golden and piping hot in the middle.

Drain on kitchen paper to absorb excess oil and serve with salas, extra chutney and raita.

GP SERVICES GROUNDWORK AND DIGGER HIRE



**PETER HAYES
PROPRIETOR**

- Mini Digger and Driver Hire
- Various Size machines
- Breaker/Auger Attachments
- Dumper Hire
- Foundations/Concreting/Drainage
- Site Clearance
- Tree and Root Removal
- Sewage Treatment Plants Installed
- Leach Fields Installed
- Road Construction/Drives
- Patios/Hard Landscaping
- Menage/Horse Arena Construction
- Muck Heap Removal
- Fencing

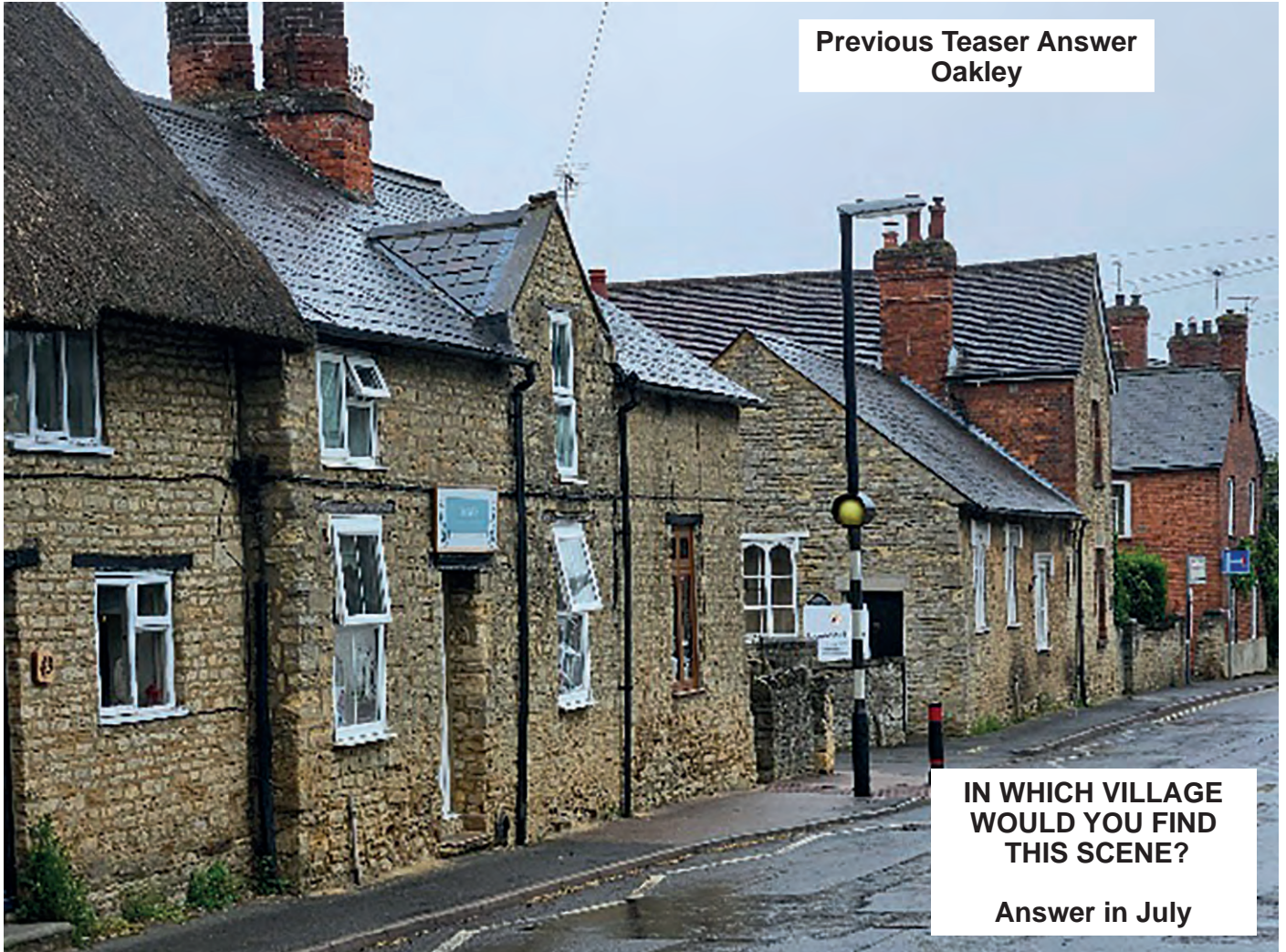
**01234 782940
07932 002937**

**enquiries@gpservicesonline.com
www.gpservicesonline.com**

FULLY INSURED

GRUNCH TEASER

Previous Teaser Answer
Oakley



IN WHICH VILLAGE
WOULD YOU FIND
THIS SCENE?

Answer in July



ABACAB DOG GROOMING

New dog grooming service in Odell. We offer a personal service aimed to meet the needs of you and your dog, catering for all breeds large or small. Our services include:-

- Clipping/trimming
- Hand stripping (Terriers and Spaniels)
- Nail trims

TELEPHONE:- 01234 720825 OR 07860 837043

SI TAX & ACCOUNTING SERVICES

QUALIFIED ACCOUNTANT
FCCA ATT

Professional and friendly service
Sole Traders, Limited Companies
Partnerships, Business Start-ups
Bookkeeping, Payroll, CIS
Subcontractors
VAT & Tax

sally@sjtax.co.uk
01234 831997
07899 808592

HOBGOBLIN THEATRE COMPANY

Hobgoblin Theatre Company's brilliantly original, outdoor production of "The Unusual Adventures of Robin Hood," tells the classic tale of Robin and his Merry Men outwitting the dastardly Sheriff of Nottingham (with more than a little help from Maid Marian.) But this time they are singing.

This musical romp is full of audience interaction, physical comedy and laugh-out-loud moments. The hilarious characters, fast-paced plotting and catchy songs will have the audience singing all the way home.

This production has been years in the making. "We've been creating theatre for children in schools for over fifteen years," says Hobgoblin's Hannah Bowen. "In that time, we've learned how to make a Five Star hit! We know what works. Children let you know when they're bored, so this show is exciting, hilarious and full of heart. The audience won't have a choice but to be swept away with it."

"This has been as much an adventure for us as it is for the Merry Men," adds the show's director Dan Foley. "We've worked very hard to make sure it's not just kids that are going to love this show. We're going to make sure that every member of the family will have a blast at The Place Theatre."

"The outdoor setting at The Place Theatre couldn't be better. The audience is instantly transported to the world of Sherwood Forest," says Dan. "There is a reason people are still telling tales of Robin Hood and his message of kindness couldn't be more appropriate, especially at the moment. We could all do with learning to be a little bit more Robin!" This production is suitable for the whole family from 4 to 104.

The show will be on at 3pm on Sunday 14th July 2024 at The Place Theatre, Bedford.

Tickets are available from: <https://theplacebedford.ticketsolve.com/ticketbooth/shows/1173653725>



FOCUS ON BEDFRINGE FESTIVAL



Evie Atkins is 16 years of age and has a real passion for performing. Evie has performed in both professional and amateur shows including Sister Act, Bugsy Malone & The little Mermaid and although a talented actress her singing is her main passion. Evie will be performing on 19th July at 8.05pm.



Join award-winning comedian and criminologist Matt Stellingwerf on 19th July at 9.30pm as he teaches you the science behind crime and punishment. From the philosophy of prisons to his interview with a serial killer on death row.

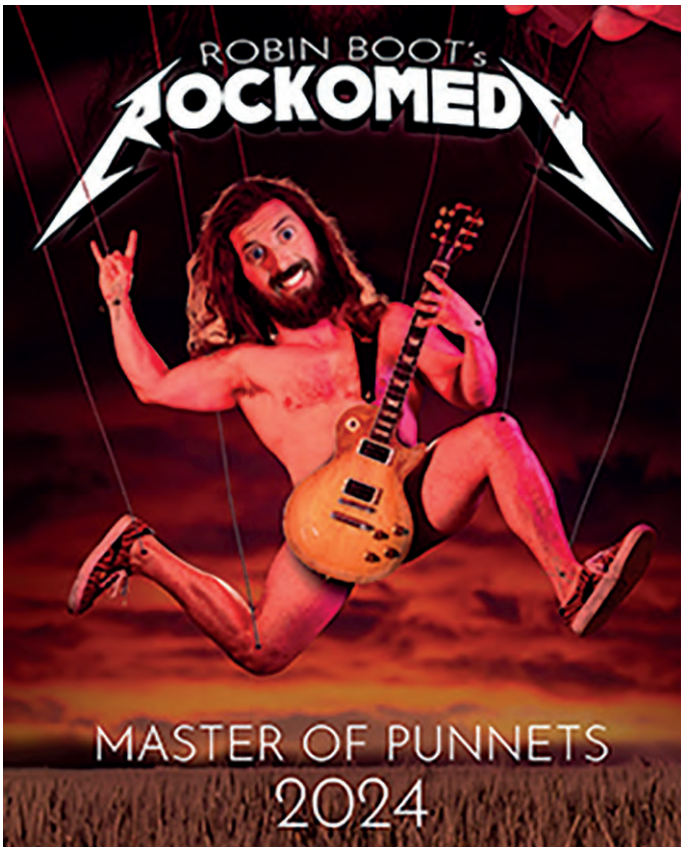


The Squad Stars are back after their SELL OUT show in 2023 on 20th July at 12.15pm. Get ready to tap those feet & clap those hands as we take you on a journey of song & dance, with the best soundtrack of old favourites to the latest, greatest hits.



Pure', 'softest', 'soulful', Kate Bush and Joni Mitchell like - are usually the words thrown to describe Lana Soy's voice. Originally from Moscow, Londoner since 18, and in love with Bedford now, Lana's music has been inspired by most 00' Pop, She is on stage on 18th July at 7.30pm.

FOCUS ON BEDFRINGE FESTIVAL



The harbinger of rock 'n' drole returns to Bedford to preview his 8th Edinburgh Fringe show, "Master of Punnets". Robin Boot is a popular visitor to BedFringe. He appears this year on 18th July at 8pm.



Alex McAleer possesses the uncanny ability to apparently tap into his audiences minds and read their thoughts at will. Alex has earned his reputation as a funny, engaging, and charismatic entertainer – all without selling his soul to Simon Cowell. The show is on 19th July at 9.10pm.



Sock! Pow! Wham! Earth's funniest footwear are back with their show of songs, sketches, socks & violence. This time they're real live Superheroes! You think you've seen heroes in tights before? This pair will run and run. The performance is on 20th July at 8pm.



The Bedfordians are a happy group of singers and players who have taken up guitars in their third age and enjoying every minute of it. They are performing on 20th July at 2pm.

FOCUS ON BEDFRINGE FESTIVAL



The Bedford Fringe Festival officially takes place between Thursday 18th July and Sunday 28th July at the Quarry Theatre but there is an hors d'oeuvres event on Tuesday 16th July at 7.30pm when Ivo Graham performs his 'work in progress' act Grand Designs.



This show on 19th July at 8pm by the well known Scottish Falsetto Sock Puppet Theatre Co will be in the best possible good taste.

An hour of songs, sketches, socks and violence, telling the true story of the Post Office Scandal.

Benjamin Alborough's **ABSOLUTE MONOPOLY**

Join comedian Benjamin Alborough as he attempts to improve Monopoly in this chaotic, interactive gameshow

★★★★★ EdFringeReview
★★★★ Chortle



Comedian Benjamin Alborough attempts to improve the image of Monopoly in this chaotic show on 19th July at 6.30pm where the audience finally become the game board.



This group of youngsters, based at Goldington Acamedy, Haylands Way, Bedford on a Saturday morning, will bring the latest West End hits to your doorstep on 20th July at 12 noon.

FOR FURTHER DETAILS

www.quarrytheatre.org.uk/bedfringe/

FOCUS ON BEDFRINGE FESTIVAL



Riseley's Sarah Chiari will be performing at the Bedford Fringe Festival on Tuesday 23rd July at 8.05pm in the Quarry Theatre Bar.

The Festival takes place from 18th July to 28th July with most of the tickets becoming available in March.

Sarah will be performing her own work featuring original songs written with passion, influenced by folk and jazz.

There will be atmospheric music with digital piano and voice.

This will be a 'Pay What You Can' event with suggested amounts ranging from £2 to £20.

Headline acts during BedFringe include Kiri Pritchard-McClean, who has appeared at The Apollo.

For further information see:
www.quarrytheatre.org.uk



Kelly McCaughan (HBO, Apple TV+) presents **Catholic Guilt** on 18th July at 6pm. Does daddy Jesus's naked body on the cross make you wet? This show will. Seriously, there's water. So, put on your waterproof panties and get ready to unpack everything from losing your virginity in the most holy way, to abortion, to a bowling experience that leads to eternal damnation, and much more.



Mark's storytelling in the Studio is a Bedfringe fixture. He's back for the 12th time in 14 years on 18th July at 6.30pm and 19th July at 3pm and will be partnered by Sara Turner. *Transformation* – shape-shifting, metamorphosis – has been a vital part of storytelling from the earliest epics to modern fantasy, and in all cultures. Mark offers four stories where physical change grows naturally from the circumstances. Three are his telling; Sara Turner will sing the fourth – one of the oldest and greatest of British folk songs.

FOR FURTHER DETAILS

www.quarrytheatre.org.uk/bedfringe/

GRUNCH THEATRE

Much Ado About Nothing
Swan Theatre Company
The Place, Bedford
2nd-6th July
7pm

Tickets: £14 Concessions: £12.and £10

Some Cupid kills with arrows, some with traps...”

In one of Shakespeare’s finest and best-loved comedies, two very different couples fall in love – but who is really pulling the strings?

Proudly independent Beatrice and Benedick and young lovers Hero and Claudio face off in this witty war of words, featuring bickering lovers, scheming villains, mistaken identity and much more!

So join us in the outdoor space this summer to be transported to sunny Italy – and remember, all’s fair in love and war...



FOR FURTHER DETAILS CONTACT THE PLACE BEDFORD
www.theplacebedford.org.uk or phone 01234 354321

GRUNCH THEATRE

Jokes and Laffes
GMG Promotions
The Place, Bedford
29th June
7pm

Tickets: £14.99 VIP Table: £19.99

Another fantastic line up for GMG Promotions Summer Jokes and Laffs.

Nabil Abdulrashid – is a unique and exciting stand-up comedian, writer, presenter and actor.

A finalist in ITV’s 2020 Britain’s Got Talent series, and as seen on Live At The Apollo and Mock The Week, Nabil’s stand-up is lauded as ‘urgent, uncompromising and refreshingly radical fare, smartly woven into a gag-packed set.’ (Sunday Telegraph)



FOR FURTHER DETAILS CONTACT THE PLACE BEDFORD
www.theplacebedford.org.uk or phone 01234 354321

GRUNCH THEATRE

Power to Change - Film Screening
Produced by Celebrate Life Events
The Place, Bedford
11th July
7.30pm
Tickets: Pay What You Can - £2-£10



Power to Change follows the journey of five people: EJ a young man drawn into gang culture from an early age; Lorraine a grieving Mother who lost her son to knife-crime as he saved another boy; Gerald, founder of Impact Brixton, who learns to navigate one of London's most dangerous areas after emigrating from Ghana as a child; Errol a repeat offender with 74 previous convictions; and Nate a former gang-member who was brutally stabbed by a childhood friend.

The stories are woven together by Kaysen, a teacher, who passionately believes in

supporting young people. Adding a unique perspective to this mix we hear from peace educator Prem Rawat whose work in prisons in the UK and around the world has had a remarkable impact.

In a time where youth violence is on the rise across the country, and with the poverty gap only increasing, this is a rare film that looks at the simplest solution: the innate goodness of a human being,

FOR FURTHER DETAILS CONTACT THE PLACE BEDFORD
www.theplacebedford.org.uk or phone 01234 354321

GRUNCH THEATRE

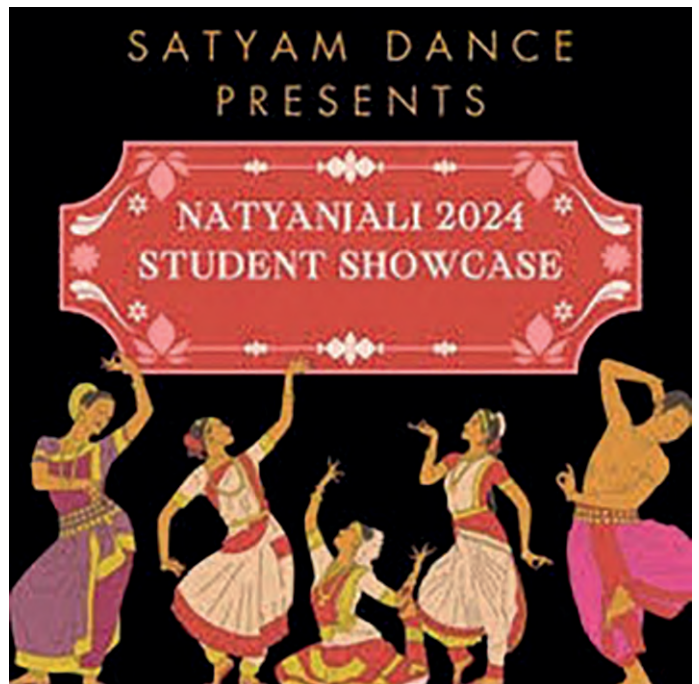
Natyanjali Student Showcase
Satyam School of Dance and Music
The Place, Bedford
30th June
4pm
Tickets: £15 Concessions £10

Satyam Dance is a Bharatanatyam (South Asian) Dance School and Dance Company based in Milton Keynes.

Artistic director Debbie Ganguli-Patel, who is a local dental surgeon and born and raised in Milton Keynes, trained in Bharatanatyam from a young age under the tutelage of Guru Prakash Yadagudde at the Bhavan Centre London.

She established Satyam Dance in 2017, and is an ISTD accredited teacher, guiding students through their training from as young as five-years old.

Natyanjali 2024 is Satyam's first full company showcase since Covid,



FOR FURTHER DETAILS CONTACT THE PLACE BEDFORD
www.theplacebedford.org.uk or phone 01234 354321



professional dog grooming

**Fully Qualified and Insured Dog
Groomer. I work one on one with your
dog, with a range of services.**

**63 High Street, Wilden,
Bedfordshire, MK44 2QD
07538276993/
k9kutsgroomers@outlook.com
Facebook- k9kutsgroomers**

FOCUS ON THE RISELEY SHOW



After more than a decade in the role, Judith Wright has stepped down as organiser of The Riseley Show.

Judith rebuilt the event from scratch and turned it into one of the best occasions in north Bedfordshire.

However, the future is in good hands as a trio of well-known faces in the village have taken on the responsibility of organising the events on the field at this year's show on 14th September - **Nicky Perfect, Karen Aves and Sharlene Taylor.**

Sharlene said: "This year, we are aiming to showcase everything that makes Riseley so special. From our fantastic local groups to the vibrant community spirit, we want to celebrate it all.

"We want to have all of the incredible Riseley groups to come together for a day of fun and festivities.

"We appreciate not all groups are able to have a stall.

"If that is the case we would like to showcase your group as part of our visual display. This will include all the different groups in Riseley.

For further information on how you can get involved email:

riseleyvillageshow@outlook.com



THE RISELEY SHOW
SATURDAY 14th SEPTEMBER
PUT THE DATE IN YOUR DIARY

GRUNCH CRICKET

BEDFORDSHIRE INVITATION LEAGUE:

In cricket, the toss is an important part of the game. If you call correctly, heads or tails, you have chance either to bat or field where your bowlers have first use of the pitch or the conditions - the ball can misbehave if it is cloudy for example.

In the **Division Two** match on 22nd June, Lidlington won the toss and asked Riseley to bat thinking their pitch, which they prepared, would give their bowlers some assistance.

The Riseley batters Sam Bennett and Dan Bennett had other ideas.

Simply, the Lidlington bowlers could not remove them and Sam made a double century - 201 not out - while Dan was unbeaten on 105 as Riseley made an incredible 329-0 from their 40 overs.

It will come as no surprise that Lidlington did not really challenge this target and were bowled out for 68 giving Riseley a 267-run triumph with 71-year-old Winston Jermy

taking 3-11 while an unnamed bowler took 3-9.

Thurleigh II were involved in another close encounter after going down by four runs to Road Runners, who made 190-9. The visitors battled hard to reach the target with captain Lee Slocombe making 38 and Dave Esposito 30.

Pavenham/Felmersham defeated Luton Caribbean by 73 runs in **Division One** where Luca Wibberley scored 43 in a total of 195-9. Caribbean replied with 122 with Nathan Baker claiming 5-31.

FIXTURES - 29th JUNE

Northamptonshire League Division Five:
Thurleigh v Burton Latimer

Four Counties League Division One: MK Warriors v Sharnbrook/Bromham. **Division Three:** Harrold v St Andrews

Bedfordshire Invitation League Division Two:
Riseley v Thurleigh; Road Runners v Harrold II.



Every Voice Choir
presents our
Summer Charity Concert

Thursday 11th July
2024 7:00 pm at Saint
Peter's Church Thurleigh

£8 per adult, children
who can sit quietly free.
Tickets are available on
the door. Cash only

A summer smorgasbord of choral
music, from Elgar to Ed Sheeran,
plus much more! All culminating in
a spectacular medley from Les
Miserables!

All ticket, raffle, and refreshment
proceeds to 'Creating Memories'
charity for local terminally ill
children and those with life
limiting conditions, and Saint
Peter's church fund

DAILY GRUNCH TEST MATCH

Thurleigh 105-4 beat Long Buckby 104 by six wickets



Thurleigh clinched a comfortable six-wicket victory over Long Buckby on 22nd June in their Northamptonshire League Division Five fixture. Bowler Brody Willerton, above, shows his frustration after nearly taking a wicket while the top picture shows wicketkeeper and captain Richard Foot making a vocal appeal.

GRUNCH CRICKET

NORTHAMPTONSHIRE LEAGUE: Thurleigh are in a comfortable second position in the Northamptonshire League **Division Five** after their six-wicket home victory over midtable Long Buckby on **22nd June**.

New Bradwell have a 20-point advantage at the top of the table after their 37-run win over third place Kettering Town II, who are now 12 points behind the Yellow Caps.

Daniel Denton was one of the heroes for Thurleigh in the field as he took three wickets for seven runs from his six overs.

Rob Pryor, Brody Willerton and Sam Richardson gave good support by taking two wickets each while there was one for Sareer Safi.

In the reply, Thurleigh got off to a good start putting on 58 for the first wicket with Chris Wood making 30 and captain Richard Foot 24. Pryor was undefeated on 16 as the hosts reached their target, losing only four wickets.

Picture Coverage on Page 50

FOUR COUNTIES LEAGUE: Gareth Alred produced a fine all-round performance as Sharnbrook/Bromham clinched a comfortable 93-run win over Newport Pagnell in **Division One**.

After a stuttering start, Alred hit a fine 96 as Sharnbrook/Bromham posted 196-7 then followed this up with three wickets for four runs as the visitors struggled in their reply.

Sharnbrook/Bromham were struggling at 71-4 and 119-6 before Alred's heroics, receiving good support from Andrew Jackson, Garth Boyles and Philip Thomas. Wicketkeeper Neil Smith was second top scorer with 19.

Newport Pagnell were bowled out for 103 with Bipin Nair also taking three wickets.

Harrold bagged a six-wicket victory in **Division Three** after dismissing Sher-E-Punjab for 84 where Euan Dazley and Charlie Gordon both took three wickets. In the reply, wicketkeeper Pasan Kulasinghe was the leading scorer with 19.

www.ousevalleyphysio.co.uk

Claudia von Caron PHYSIOTHERAPIST

- Back pain & sciatica
- Neck & shoulder pain
- Whiplash & headaches
- Sports injuries
- Work related disorders
- Repetitive strain
- Injuries to joints & soft tissues
- MS & stroke

Mrs Claudia von Caron MCSP, Chartered Physiotherapist

Ouse Valley Physiotherapy Practice
3 The Drive, Sharnbrook, Bedford MK44 1HU
claudia@ousevalleyphysio.co.uk

Call 01234 781777



BODY



HARMONY



GRUNCH CARPET BOWLS



During the summer, bowls is usually played outdoors and in all types of weather.

However, there are a small group of bowlers, who prefer to stay indoors making sure they are not victim to frequent showers.

One such group is Renhold Carpet Bowls Club and although they are a friendly outfit, they are a competitive bunch.

They recently played a friendly against Gransden and clinched a 57-36 victory in a tense encounter. The return match is at the end of this month.



JIGSAW CHALLENGE

Saturday 13th July 6pm
St. Denys Church Colmworth



Enjoy a fun evening with friends completing a Jigsaw

£10 per ticket, includes a 2-course meal
Bring your own drink
Raffle
Proceeds to church funds

Contact: Wendy Jephcote or Jackie Ayto for tickets

Wendy: 07415 006278 or wendy.jephcote@gmail.com
Jackie: 07929 943348 or jackieayto@btinternet.com

Summer Fair

Saturday
6th July
11:00-3:00

Artisan Stalls
Fairtrade
Refreshments
BBQ
Novelty Photobooth

Fair Games
Bric-a-Brac
Family Races
Treasure Hunt

Carlton Village Hall
The Moor Carlton Beds MK43 7JR

Fundraiser for Carlton Village Hall and the PTFA for Carlton School

SHARNBROOK BOWLS CLUB MONDAY EVENING ACTION



There was plenty of activity on the green at Sharnbrook Bowls Club during the evening of 10th June.

A key interest was the Bedford Men's Bowls League match between Sharnbrook A and Meltis but as we went to press - old fashioned term - no result had been recorded.

However, we know that Sharnbrook A were looking for their first win of the

season in Division One having lost previously to Wilstead C and Kempston Hammers.

On this evening, Sharnbrook B were drawing 13-13 at Bedford Borough while the C team

went down 39-29 in their away match at Wilstead A.

Along with the men's encounter at Lodge Road,, there was also a women's singles match taking place.

MONDAY 10th JUNE

The Kimbolton Country Fayre

and Classic Car Show

Sunday 14 July 2024

Kimbolton Castle Rotary Club Charitable Trust
Registered Charity No 1202957

www.kimboltoncountryfayre.org



ALI BLAIR MEMORIAL GOLF DAY



Mark Smith won the 2024 Ali Blair Memorial Golf Day, which was held at Mowsbury Golf Club on 8th June,

The runner-up in the annual event was Kevin Harris. The Longest Drive Award went to Fred Pontin while Mark Smith added a second trophy by being Nearest to the Pin.

Adam Rawley had the Longest Drive with a 7-Iron while Robin Randall, who travelled from Scotland for the event, had the longest putt on the 18th green. The winner of the Lifetime Achievement Award for long support of The Day was Trevor Fordham.



SATURDAY 8th JUNE



Soulbrook
Property Services

Extensions



Renovations



Carpentry & Joinery



Bathrooms



Kitchens

01234 782558

07731 818990

www.soulbrook.co.uk