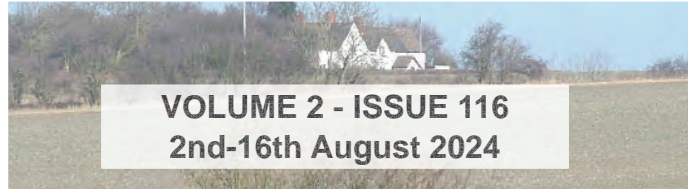


THE DAILY GRUNCH

SERVING VILLAGE COMMUNITIES IN NORTH BEDFORDSHIRE



VOLUME 2 - ISSUE 116
2nd-16th August 2024

Produced by Grassroots Publications
Previously The Rural Grunch
07725 812963

Email: dailygrunch@outlook.com

Web: www.grassrootspublications.co.uk

**KIMBOLTON COUNTRY FAYRE &
CLASSIC CAR SHOW**
SEE PAGES 32-33

BEDFORD RIVER FESTIVAL
SEE PAGES 18-20

**THEATRE
COVERAGE**
SEE PAGES 43-44

**SPORTS
COVERAGE**
SEE PAGES 45-51

PAGE CHANGES TO THE ONLINE DAILY GRUNCH

To assist our readers we have expanded our Key Changes section.

This allows regular readers to see what has changed at a glance in the editions that they may have missed.

SEE RATE CARD ON PAGE 3

Front Cover: *Crowds at the Kimbolton Country Fayre and Classic Car Show*

Picture: *Graham White*

CONDITIONS OF ACCEPTANCE

Although every effort will be made to meet advertisers wishes, the publishers do not accept responsibility for inaccuracies in advertisements or in consequences arising, nor do they guarantee the insertion of any advertisement on a specified date, or in a specified section of the paper. Furthermore, the publishers do not accept any responsibility for one or more of a series of advertisements being omitted for any cause whatsoever. They reserve the right to amend or omit or reclassify or suspend any advertisement previously ordered without giving a reason or prior notice to the advertiser. No responsibility is accepted for the loss or damage to copy, or error in the printing. It is the responsibility of the advertiser to ensure conformity with the Trade Description Act 1968, Sex Discrimination Act 1975 and Business Advertisements (Disclosure Order 1977). All advertisements are accepted in good faith. Placing an order with THE DAILY GRUNCH will signify acceptance of the above conditions.

Artwork forming part or whole of any advertisement prepared by THE DAILY GRUNCH on behalf of any advertiser may not be used in any other publication whatever without permission of the publishers.

KEY CHANGES TO THE DAILY GRUNCH FROM THE LAST ISSUE

2nd August: *Page 6, Page 17, Page 23, Page 24, Page 44, Page 48*

1st August: *Page 45, Page 47*

31st July: *Page 50*

30th July: *Page 17, Page 35*

29th July: *Page 15, Page 54*

28th July: *Page 36, Page 37*

27th July: *Page 44, Page 45, Page 46, Page 47, Page 48*

26th July: *Page 43, Page 45, Page 46, Page 47, Page 48.*

25th July: *Page 43, Page 44, Page 45*

AS ALWAYS WE ENCOURAGE YOU TO SEND US YOUR NEWS AND DETAILS OF ANY EVENTS YOU MAY BE HOLDING.

Email us at

dailygrunch@outlook.com

Deadline: Approx two working days before publication - for example Friday = 10am Wednesday

WELCOME TO THE DAILY GRUNCH

It will be four years on 12th April since we launched the online Daily Grunch.

This replaced the traditional Rural Grunch, which we had published and printed since March 2009.

We made the decision to go online following the Covid 19 Lockdown that came into effect on 23rd March 2020.

After Covid 19, the UK has suffered a cost-of-living crisis and it is safe to say we would not have been able to continue the magazine in its traditional form due to the increase in prices for paper and print.

As indicated in its title, we are able to update the online magazine on a daily basis and we do this 300 times a year.

This allows us to give coverage of local community events almost immediately after they have taken place rather than wait up to 31 days, which was the case with the printed monthly issue.

The same applies with advertising as we can insert material almost as soon as we

receive the copy. The online magazine is also in colour, which makes our coverage of community events more attractive.

Our goal remains the same - supporting community events and small businesses.

You will have noticed on our access page - www.grassrootspublications.co.uk - that we have produced a number of supplements.

The Summer 2023 includes a record of community events during the first part of last year while the Autumn 2023 does likewise up to Christmas.

We are aiming to produce similar publications for 2024.

We have also set up a Business and Community Directory. Please contact us at dailygrunch@outlook.com for further information including rates for the Directory.

See below for The Daily Grunch Rate Card.

Graham White

RATE CARD

ADVERTISING PRICES

FROM 8th APRIL 2024

Full Page: 30p per issue

1/2 Page: 18p per issue

1/4 Page: 12p per issue

Community Rates: 50% Discount

Invoicing every 100 issues. 300 issues per annum.

All Prices ex-VAT

For further information and to place advertising: dailygrunch@outlook.com

AS ALWAYS WE ENCOURAGE YOU TO SEND US YOUR NEWS AND DETAILS OF ANY EVENTS YOU MAY BE HOLDING.

Email us at

grassrootspublications@btconnect.com
ruralgrunch@btconnect.com

Deadline: Approx two working days before publication - for example Friday = 10am Wednesday

TAKE A SHORT CUT BY SUE

Many people are now reading The Daily Grunch but for some it is a new experience.

For a few, it may be too many clicks or you cannot remember the name of the website.

There is a little trick:

Go to the www.grassrootspublications.co.uk Home Page where the link to The Daily Grunch is located. In the top right hand corner of this page you will see 'three vertical dots'. Click on these and you will see a list of options.

Choose 'Add to Home Screen' and you should have an icon for Grassroots Publications in the favourites area or something similar on your device. Then any time you want to access The Daily Grunch you only have to click on this icon to take you to the link.

If you want to find a specific article in The Daily Grunch try this



Ctrl + F to find the subject/word you are looking for. This avoids trying to find the elusive article.

For example: Open The Daily Grunch – Press **Ctrl + F** which will open a small box, Type in the box the topic/number you are looking for. Say for example - 'Riseley'.

You will find 16 entries in the 27th October.2020 edition.

Sue
www.renholdvillage.co.uk

NEW YEAR'S RESOLUTION

Why not try a walk with North Beds Ramblers?

We are a friendly group who walk on Saturdays:
Every Saturday afternoon, approx. 6 miles

Saturday mornings, twice monthly, 10 -12 miles
Just turn up wearing suitable footwear and clothing
Sorry only assistance dogs allowed



We walk in all weathers,
you may get wet and muddy!!

Bring refreshments
(and plenty of water in the summer)



Interested?

Find our programme on the Ramblers website <https://www.ramblers.org.uk/north-bedfordshire>
Facebook <https://www.facebook.com/groups/northbedsramblers>
Twitter @nb_ramblers

Walks are free but if you decide to walk with us regularly we would like you to join the Ramblers

The Ramblers' association is a registered charity (1093577) and a company limited by guarantee, (No.445892). Registered Office: 1 Clink Street, 3rd Floor, London. SE1 9DG

Collection Calendar

Please ensure that your bins are out for collection by 6am on your collection day. Missed collections must be reported within 48 hours of your scheduled collection. Visit www.bedford.gov.uk/recycling to report a missed collection.



Remember! Garden waste collections are suspended from 1st December to 1st March.

December 2023 and January 2024 Date Changes

Recycling only

Mon 25 Dec	moves to	Sat 23 Dec
Tues 26 Dec	moves to	Weds 27 Dec
Weds 27 Dec	moves to	Thurs 28 Dec
Thurs 28 Dec	moves to	Fri 29 Dec
Fri 29 Dec	moves to	Sat 30 Dec

Rubbish only

Mon 1 Jan	moves to	Tues 2 Jan
Tues 2 Jan	moves to	Weds 3 Jan
Weds 3 Jan	moves to	Thurs 4 Jan
Thurs 4 Jan	moves to	Fri 5 Jan
Fri 5 Jan	moves to	Sat 6 Jan

Key

Red Outline = Date Change

Orange = Recycling Only

Purple = Recycling and Garden

Grey = General Rubbish

December 2023				
M	T	W	T	F
				1
4	5	6	7	8
11	12	13	14	15
18	19	20	21	22
25	26	27	28	29

January 2024				
M	T	W	T	F
1	2	3	4	5
8	9	10	11	12
15	16	17	18	19
22	23	24	25	26
29	30	31		

February 2024				
M	T	W	T	F
			1	2
5	6	7	8	9
12	13	14	15	16
19	20	21	22	23
26	27	28	29	

March 2024				
M	T	W	T	F
				1
4	5	6	7	8
11	12	13	14	15
18	19	20	21	22
25	26	27	28	29

April 2024				
M	T	W	T	F
1	2	3	4	5
8	9	10	11	12
15	16	17	18	19
22	23	24	25	26
29	30			

May 2024				
M	T	W	T	F
		1	2	3
6	7	8	9	10
13	14	15	16	17
20	21	22	23	24
27	28	29	30	31

June 2024				
M	T	W	T	F
3	4	5	6	7
10	11	12	13	14
17	18	19	20	21
24	25	26	27	28

July 2024				
M	T	W	T	F
1	2	3	4	5
8	9	10	11	12
15	16	17	18	19
22	23	24	25	26
29	30	31		

August 2024				
M	T	W	T	F
			1	2
5	6	7	8	9
12	13	14	15	16
19	20	21	22	23
26	27	28	29	30

September 2024				
M	T	W	T	F
2	3	4	5	6
9	10	11	12	13
16	17	18	19	20
23	24	25	26	27
30				

October 2024				
M	T	W	T	F
	1	2	3	4
7	8	9	10	11
14	15	16	17	18
21	22	23	24	25
28	29	30	31	

November 2024				
M	T	W	T	F
				1
4	5	6	7	8
11	12	13	14	15
18	19	20	21	22
25	26	27	28	29

GRUNCH OPINION

So in a column in a local online newspaper, Mayor Cllr Tom Wootton states that Bedford is on the up and the up.

The Mayor backs up his argument by stating that the town should be proud of the events that it stages such as the River Festival and the Summer Concerts in Bedford Park.

However, Cllr Wootton appears to have forgotten one event that he should be really proud of.

We have heard of the Edinburgh Festival, which showcases the arts every year.

It may come as a surprise that Bedford plays an important part in that Festival, giving performers the chance to fine tune their acts.

The Bedford Fringe Festival has grown over the years and has become one of the largest Fringe events in England.

It may take a little while to get used to the fact that the performance you are watching is a 'Work in Progress'.

The reality is that the act is already of a very high standard and you will be watching a quality show.

There, though, may be the odd occasion where the performer will admit that something needs modification before the big event.

This was the first time I have been able to watch a reasonable number of events, ranging from comedy, mind readers and music. I can honestly say I did not see a below-par performance.

A particular favourite was mind reader Matt Daniel-Baker. I do not usually believe in such things but was left baffled. How did he know the name of my best mate at school 50 years ago?

On the same night Riseley singer Sarah Chiari was performing in the bar and another highlight was the Confessions of a Teletubby plus there was the hilarious Ironing Board Man. Man. Pay a visit next year Tom.

Graham White

DAVID JAMES

WWW.DAVIDJAMESKITCHENS.CO.UK



We are a local manufacturer of beautiful kitchens. We sell direct to save you money. The factory showroom has an extensive display of different styles.



**SAVINGS ON ALL KITCHENS
& Up To 25% Off Top Brand
Appliances**

**PULLOXHILL BEDS MK45 5EU
01525 722230**





Treespecific^{Ltd}

tree management

A comprehensive range of tree services from a local dedicated tree surgeon with twenty years experience within the tree industry

- ✦ All aspects of Tree Maintenance and Tree Care
- ✦ Tree Felling
- ✦ Crown Reduction/Thinning
- ✦ Sectional Dismantling
- ✦ Hedges Reduced and Trimmed
- ✦ Dead Wood Removed
- ✦ Fruit Tree Pruning
- ✦ Tree Planting
- ✦ Fully insured and Skilled Arborist
- ✦ Member of the Royal Forestry Society

Contact us today for a free quote

Telephone: **01234 828895**

Mobile: **07949 368374**

Email: **simonowen@treespecific.co.uk**

www.treespecific.co.uk

FOCUS ON THE VILLAGER BUS

The Villager Bus is run by volunteers for the North Bedfordshire communities. There are scheduled routes each week and it can be hired for outings.

The new bus can take up to 16 passengers including space for one wheelchair user. It has a low floor for easy access and a wheelchair ramp, as well as air conditioning, WiFi and phone charging points.

The Villager Bus provides regular bus services from the North Bedfordshire villages to various destinations, including Olney, Bedford, Milton Keynes, Rushden Lakes and St Ives. Concessionary Bus Passes can be used as well as payment by card or cash. Currently the cost of a single journey to any destination is only £2.

The purchase of the new bus was made possible with the generous support of various sponsors including Bedford Borough Council, the Harpur Trust, The Gale Family Charity Trust, Felmersham and Radwell Community Trust, Wixamtree Trust, The Connolly Foundation and the Christopher H R Reeves Trust.



● The brand new Villager Bus.

The Villager Bus is a service for all, helping everyone to get out to town centres and local supermarkets. It has been run entirely by volunteers since 1987 with the aim of improving the lives of those in the North Beds villages.

The service supports many older people and those with mobility problems who may find it difficult to travel on their own. It's a great opportunity to socialise too! We currently deliver between 250 and 300 passenger journeys a month as well as frequent community hires.

● The Villager Bus (Sharnbrook) committee member Andrew Gell welcomes a passenger for a local service.



FOCUS ON THE VILLAGER BUS

Riseley/Thurleigh – Sainsbury's (Bedford, Clapham Road)

Route VL12 - 1st & 3rd Wednesday of each month		
	Out	Return
Riseley, High St. (Gold St)	0930	1135
Bletsoe, Church	0940	1130
Milton Ernest, Opp Queens Head	0945	1125
Sainsbury's	0955	1110
Thurleigh, The Close	1010	1225
Milton Ernest, Marsh Lane	1020	1215
Sainsbury's	1040	1200

Sharnbrook – Riseley - Melchbourne – Rushden - Waitrose/ Rushden Lakes

Route VL13 - 2nd Monday of each month		
	Out	Return
Sharnbrook, Lodge Rd/Loring Rd	0855	1308
Sharnbrook, Opp Nisa Store	0858	1305
Bletsoe, Opp Church	0903 RR	1300
Thurleigh, The Close	0918 RR	1255
Riseley, High St (Gold St)	0930	1243
Riseley, Primary School	0933	1240
Swineshead, Church	0936	1237
Upper Dean	0943 RR	1230
Melchbourne	0948 RR	1225
Yelden, High Street /Spring Lane	0953	1220
Newton Bromswold Village	0957	1216
Rushden, College Street	1003 RR	1210
Rushden, Waitrose/Rushden Lakes	1012 RR	1201

Felmersham - Sharnbrook - Riseley - Kimbolton - Huntingdon - St Ives

Route VL14 - 3rd Monday of each month			
	Out		Return
Felmersham, The Sun	0840	RR	1557
Sharnbrook, Lodge Rd/Loring Rd	0850		1550
Sharnbrook, Opp Nisa Store	0900		1547
Bletsoe, A6 Bus Stop	0905	RR	1542
Milton Ernest	0907	RR	1540
Thurleigh, The Close	0905	RR	1535
Riseley, High St (Gold St)	0917		1523
Riseley, Primary School	0920		1520
Swineshead, Church	0923		1517
Melchbourne Village	0929	RR	1511
Upper Dean, High Street	0933		1507
Shelton, Bus Stop	0937	RR	1503
Lower Dean, High Street	0942		1458
Tilbrook, White Horse	0945		1455
Kimbolton, Post Office	0948		1452
Stonely, Main Road	0950		1450
Gt. Staughton, Snooty Tavern	0953		1447
Dillington, Crossroads	0954		1446
Perry, Opp Wheatshaf	0956		1444
Brampton, Thrapston Road	1007		1433
Huntingdon, Bus Station	1010		1430
St Ives, Bus Station	1025		1415

Sharnbrook - Harrold - Turvey - Milton Keynes

Route VL15 - 1st Tuesday of each month		
	Out	Return
Sharnbrook, Swan	0930	1331
Sharnbrook, Lodge & Loring Rd	0932	1329
Odell, The Bell	0936	1325
Harrold, Centre	0943	1318
Carlton, The Fox, via The Moor	0950	1311
Turvey, The Green	0958	1303
Newton Blossomville, Old Mill	1004	1257
Clifton Reynes, Robin Hood	1011 RR	1250
Milton Keynes, Shop Centre	1030	1230



The Villager Minibus



The Villager is a friendly bus service that runs through many North Bedfordshire villages going to Milton Keynes, Olney, Rushden Lakes, St Ives and Sainsbury's in Bedford. All Concession Pass holders travel free and children travel half price.

Do support your local community bus service run and driven by volunteers.

Thurleigh - Harrold - Lavendon - Olney - Milton Keynes

Route VL4 - 2nd Tuesday of each month		
	Out	Return
Thurleigh, The Close	0900 RR	1322
Milton Ernest, Queens Head	0905 RR	1317
Radwell Village	0907 RR	1315
Felmersham, Sun	0910	1313
Carlton, Crossroads	0918	1307
Carlton, The Fox	0920	1305
Harrold, Centre	0925	1300
Lavendon, Cross	0935	1250
Olney, Market Place	0940	1245
Milton Keynes, Marks & Spencer	0958	1230
Milton Keynes, The Point	1000	1230

24 April 2023

Passengers are strongly advised to book their journeys, apart from the Olney and Sainsbury's runs, using our website.
www.sharnbrookvillagerminibus.co.uk
 Or phone: 01234 708191

Where you see RR in the timetable, this means **Rider Request**. The bus calls for passengers on request only, ie where booked.

Sharnbrook - Felmersham - Odell - Harrold - Lavendon - Olney Market

Route VL5A - Every Thursday		
	Out	Return
Sharnbrook, The Swan	0910	1148
Sharnbrook, Lodge Rd/Loring Rd	0912	1146
Felmersham, The Sun	0915 RR	1143
Odell, Bell	0920	1138
Harrold, Green	0924	1134
Lavendon, Cross	0932	1126
Olney, Market Place	0938	1120

Clapham-Oakley-Stevington-Turvey-Milton Keynes

Route VL6 - 4th Tuesday of each month		
	Out	Return
Clapham, Community Centre	0900	1330
Oakley, High Street	0905	1325
Oakley, Memorial	0907	1323
Pavenham, Close Road	0910	1320
Pavenham, Weavers Lane	0913	1317
Stevington, West End	0918	1312
Stevington, Cross	0920	1310
Bromham, Grange Lane	0925	1305
Turvey, Station Road	0930	1303
Turvey, The Green	0932	1300
Newton Blossomville, Old Mill	0938	1253
Clifton Reynes, Robin Hood	0945 RR	1243
Milton Keynes, Marks & Spencer	0958	1230
Milton Keynes, The Point	1000	1230

Sharnbrook/Odell - Harrold - Sainsbury's (Bedford, Clapham Road)

Route VL11 - 2nd & 4th Wednesdays of each month		
	Out	Return
Sharnbrook, Opp Fordham Arms	0930	1230
Sharnbrook Court	0935	1225
Sharnbrook, The Swan	0937	1223
Sharnbrook, Lodge Rd/Loring Rd	0940	1220
Odell, The Bell	0943	1217
Harrold, Centre	0948	1212
Carlton, The Fox	0954	1206
Pavenham	1003	1157
Clapham	1015	1145
Sainsbury's	1020	1140

Our bus is available for community private hire. Our website has more information:

www.sharnbrookvillagerminibus.co.uk

or e-mail: villagerbus.sharnbrook@gmail.com

If you are interested in becoming one of our volunteer drivers do phone us for an informal chat without any obligation on 01234 708191.



Carlton - Stevington - Bromham - Turvey - Cold Brayfield - Olney Market

Route VL5B - Every Thursday		
	Out	Return
Carlton, Fox	1003	1243
Stevington, West End	1008	1238
Stevington, Cross	1010	1236
Stevington, Alms Houses	1012	1234
Bromham, Grange Lane	1017	1229
Turvey, Station Road	1023	1223
Turvey, Jacks Lane	1025	1221
Turvey, Green	1026	1220
Cold Brayfield	1028	1218
Olney, Market Place	1036	1210

Melchbourne-Riseley-Sharnbrook-Olney-Milton Keynes

Route VL7 - 3rd Tuesday of each month		
	Out	Return
Melchbourne, Village	0850 RR	1335
Swineshead, Church	0855 RR	1330
Riseley, Primary School	0900 RR	1326
Riseley, High St (Gold St)	0903 RR	1323
Bletsoe, Church	0909 RR	1317
Sharnbrook, Swan	0916	1310
Sharnbrook, Lodge Rd/Loring Rd	0918	1308
Odell, The Bell	0921	1305
Harrold, Centre	0926	1300
Lavendon, Cross	0931	1255
Olney, Market Place	0936	1250
Milton Keynes, Marks & Spencer	0954	1230
Milton Keynes, The Point	0956	1230

YELDEN STRAWBERRY FAYRE



The Yelden Strawberry Fayre again proved to be one of the top village events in North Bedfordshire.

The events in the gardens of residential properties continue to be a popular feature.

However, a significant improvement is that the Village Hall and its surrounds is now a key focal point with its array of refreshments.

This included the strawberry teas while there were also delights from the dessert van, a Pimms bar and the Champagne and Oyster tent.

To prove the Fayre's popularity - the traffic jam in the High Street returned.

**YELDEN STRAWBERRY FAYRE
COVERAGE ON PAGES 10-11**

SUNDAY 30th JUNE

YELDEN STRAWBERRY FAYRE

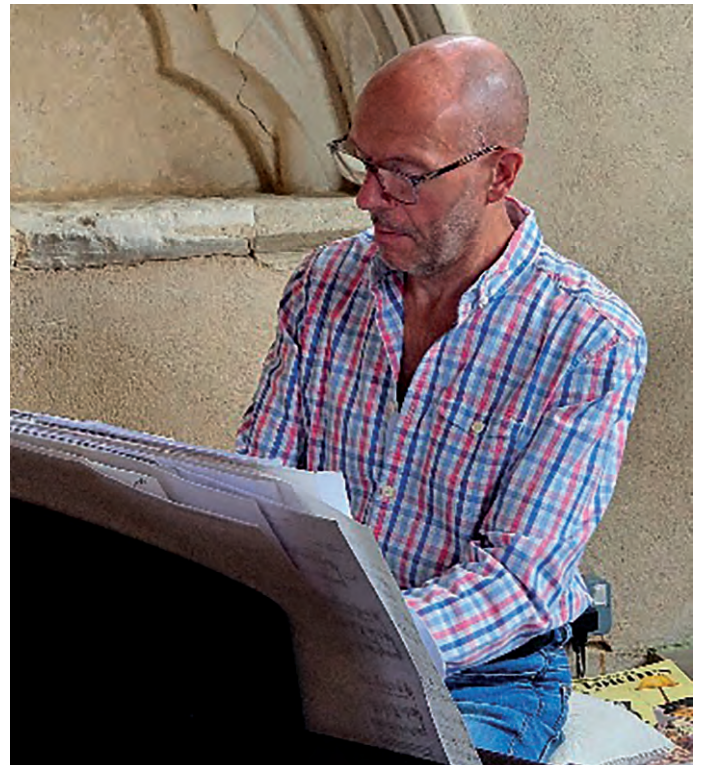
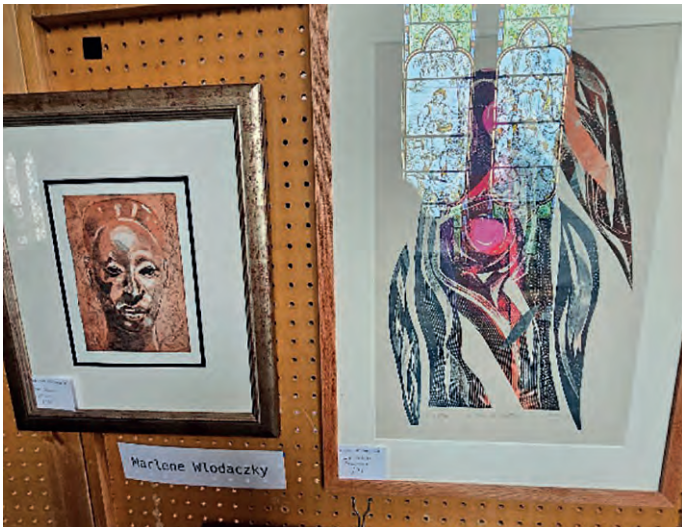


The Yelden Strawberry Fayre catered for all tastes including an array of stalls in the marquee at the Village Hall, Punch and Judy plus a miniature railway in a garden while the musical entertainment came from the Ouse Valley Swing Band.

**YELDEN STRAWBERRY FAYRE
COVERAGE ON PAGES 10-11**

SUNDAY 30th JUNE

YELDEN ART FESTIVAL



The Yelden Art Festival attracted a high standard of exhibits covering a wide range of themes.

The event was held at St Mary's Church and was part of the Yelden Strawberry Fayre.

The Festival was taken to another level by some fine background music.

SATURDAY 29th JUNE AND SUNDAY 30th JUNE

Lane &

HOLMES

Est. 1985

Sales, Lettings & Auctions



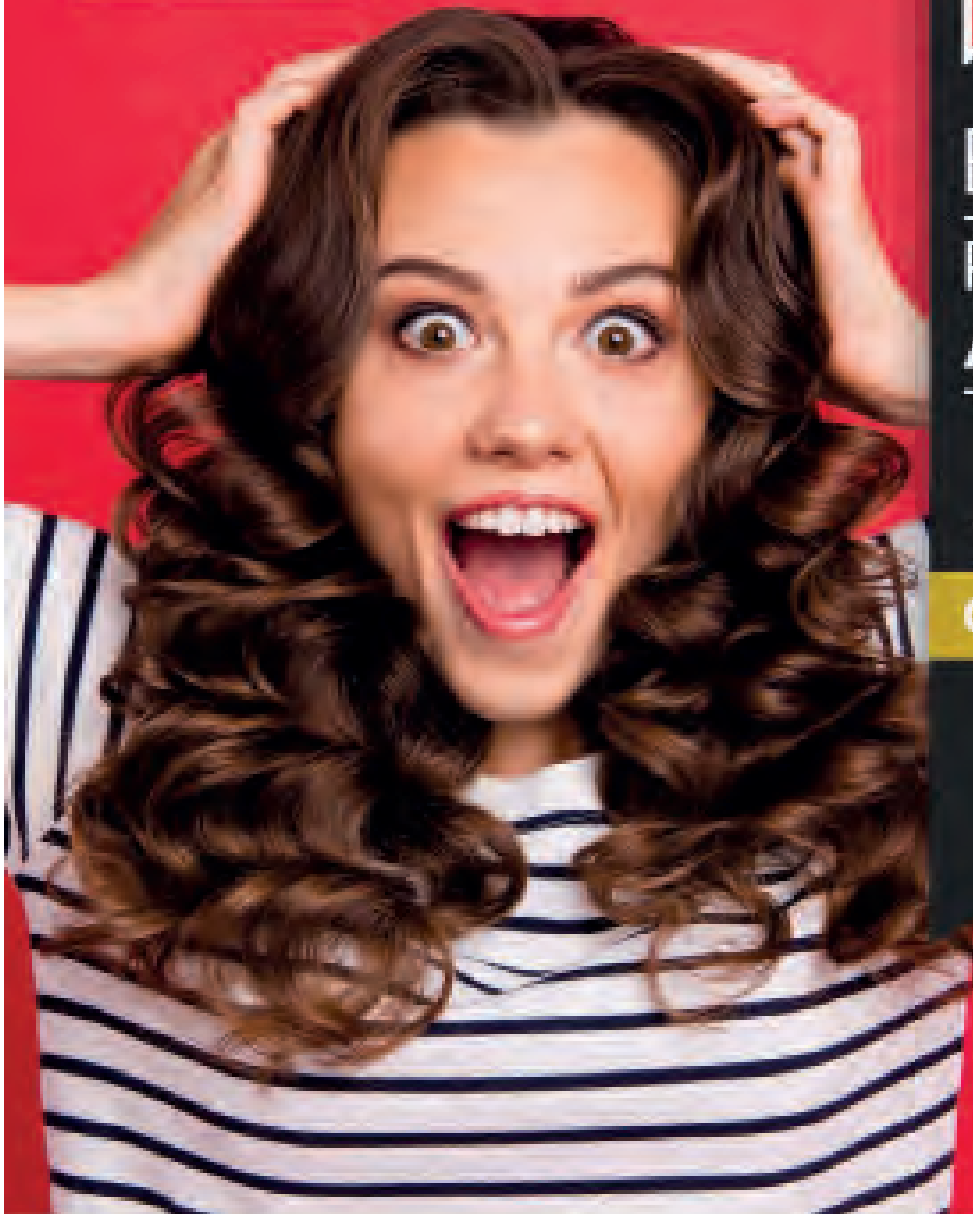
BRITISH
PROPERTY
AWARDS

2021



GOLD WINNER

ESTATE AGENT
IN BEDFORD



Have you seen... We **won!**
For a winning service, **talk to us.**

01234 327744 | sales@laneandholmes.co.uk | laneandholmes.co.uk



professional dog grooming

**Fully Qualified and Insured Dog
Groomer. I work one on one with your
dog, with a range of services.**

**63 High Street, Wilden,
Bedfordshire, MK44 2QD**

**07538276993/
k9kutsgroomers@outlook.com**

Facebook- k9kutsgroomers

FOCUS ON NORTH BEDS RAMBLERS

Have you ever wondered about the bright yellow topped way makers you might encounter on a walk in the Bedfordshire Countryside? How do they get their yellow paint, how do they get into position, what happens when you see one that is either rotten or broken?

Not all counties have yellow topped way markers – certainly none of our northern neighbours do, but if you are a regular walker, you may well be aware that they are so much easier to spot than just a plain post. As part of North Beds Ramblers, we are well used to scanning the horizon for our yellow friends to confirm that we are heading in the correct direction.

Bedford Borough has over 900km of footpaths, bridleways and byways so imagine how many posts are distributed along those kilometres.

Sadly, wooden posts do not last forever and they need to be replaced. This is down to the work of Bedford Borough's Rights of Way team, who work hand in hand with local landowners and volunteer groups, including the Ramblers, to try to keep our Rights of Way in good order and well-marked.

In the past, posts were supplied to the Council



● The humble waymarker post.

pre-painted but a few years ago that stopped and in stepped the local Ramblers. A number of local Ramblers members volunteer for RIPPLE (Repairing & Improving Public Paths for Leisure and Exercise). As part of this activity, we are the first step in preparing posts for deployment.

A small group mark up the posts for painting and apply three coats of paint – two of which are the bright yellow you will be used to searching out. These posts are then taken out to the various localities where more Ramblers volunteers – along with other volunteer groups and landowners 'plant' them in the appropriate positions. Our group of trusty volunteers are in the process of painting the latest batch of 50 posts to bring our total to over 400.

So next time you see a lovely yellow topped post – spare a thought for those who spend their time painting and deploying the posts. If you see one that is broken you can report its location on the Borough website, ideally with a picture on 'Report a problem on a public right of way'. If you would like to get involved, or just walk, please contact North Beds Ramblers on northbedswalks@gmail.com. We don't just paint and deploy posts, but also carry out path clearance, stile repairs and install gates.



● Dedicated workers making some new waymarker posts.

Sandra Kelsey

See Ramblers Advert on Page 4

THURLEIGH DOG SHOW



● A top class judge was present at the Thurleigh Dog Show on Sunday 30th June. Vicky Green has judged at Crufts and it was pleasing she was able to cast a look over the dogs at a grassroots event. Vicky is pictured in the above right photo inspecting a competitor in the puppy class, The morning event featured the affiliated classes and included some experienced performers. There was a change of emphasis after lunch with the fun classes. In addition, a bouncy castle was in place for the youngsters along with plenty of refreshments.



Andrew Blair

Professional Carpet and Upholstery Cleaning
Phone or Whatsapp 07867499792
e-mail arblair64@yahoo.co.uk
website
<https://andrewblairprofessionalcarpetandupholsterycleaning.com>

PLEASE SUPPORT OUR ADVERTISERS

FOR YOUR DIARY

Saturday 3rd August: North Beds Ramblers Walk - 1.30pm Harrold & Odell Country Park. 6.5 miles. Donation required for car parking in Country Park. For further details go to www.ramblers.org.uk/north-bedfordshire.

Saturday 3rd August: Coffee Shop, Stables Christian Centre, Bolnhurst. 2pm-4:30pm Homemade cakes with tea, coffee in a rural setting. On sale: plants, preserves, and craft items. Facebook: [stableschristiancentre](https://www.facebook.com/stableschristiancentre)

Saturday 10th August: North Beds Ramblers Walk - 8.30am Bedford Railway Station. London Walk. From Paddington to Kings Cross. For further details go to www.ramblers.org.uk/north-bedfordshire.

Saturday 10th August: All Saints Church, Renhold. 11am. Family Car Treasure Hunt. Prize for winning team. Cost £20 per car.

Saturday 10th August: North Beds Ramblers Walk - 1.30pm. Great Denham Park and Ride. Great Denham Great Ouse Walk 6 miles. For further details go to www.ramblers.org.uk/north-bedfordshire.

Saturday 17th August: North Beds Ramblers Walk - 1.30pm Turvey. Meet at large lay-by on outskirts of village close to MK43 8EW. 6.5 miles. For further details go to www.ramblers.org.uk/north-bedfordshire.

Sunday 18th August: Show Field Colworth. All Day. Souldrop Charity Horse Show and Family Dog Show.

Saturday 7th September: The Dalton Centre Upper Dean at 12.30pm. The Dean & Shelton Country Show. Entertainment for all the family including stalls, band music, exhibition of vintage vehicles plus traditional showing of fruit and veg along with crafts and photography.

Saturday 7th September: Coffee Shop, Stables Christian Centre, Bolnhurst. 2pm-4:30pm Homemade cakes with tea, coffee in a rural setting. On sale: plants, preserves, and craft items. Facebook: [stableschristiancentre](https://www.facebook.com/stableschristiancentre)

Saturday 7th September: Keysoe Village Show at 2pm. The Village Show at Keysoe. Entertainment for all the family including WI marquee for teas. Showing of fruit and veg, crafts and photography. Plus Scarecrows Competition.

Friday 13th, Saturday 14th and Sunday 15th September: Turvey House, High Street, Turvey. 9am-5pm. Bedfordshire Steam and Country Fayre. Vintage Vehicles and steam engines. Plus entertainment for all the family.

Saturday 14th September: Riseley Village Hall at 1.30pm. Riseley Show. Showing of fruit, veg, crafts and photography. Entertainment for all the family including Dog Show. Official opening at 2pm.

Tuesday 17th September: Addison Centre, Kempston at 2.15pm. Bedford National Trust meeting. Speaker Bill Hamilton off BBC Scotland news. Will talk about his career especially life in the trouble spots at home and abroad. Details: Betty Thomas on 01480 860421.

Every Sunday: Great Barford Village Hall at 10am. Great Barford Run Together. Running for fun for all standards including novices.

Every Thursday: Riseley Village Hall 3.30-5pm. Riseley Bus Stop Cafe for School Years 7-13 During school term.

First Friday of the Month: Keysoe Village Hall at 7.30pm. Bar Night

Every Saturday: There may be cricket matches at Riseley, Harrold, Sharnbrook and Thurleigh

FOR YOUR DIARY

£1 per insertion per 30 days for a max 30 word insertion, cheque payable to Grassroots Publications, may be sent to Grassroots Publications, 2, Strawberry Hill Cottages, Knotting Green, Bedford, MK44 1AB Use this section to advertise any community or social event that may be coming up in the forthcoming months. It can include sports events. We reserve the right to omit any dates if payment is not made. If in doubt feel free to contact us on 07725 812963 or email: dailygrunch@outlook.com. Price includes VAT

BEDFORD RIVER FESTIVAL



The Bedford River Festival again attracted thousands of visitors from all over Bedfordshire and beyond.

Dragon Boat and Raft Racing were highlights on the river along with an illuminated boat parade on the Saturday evening.

On dry land, there were opportunities for local businesses to showcase their skills.

**BEDFORD RIVER FESTIVAL COVERAGE
ON PAGES 18-20**

SATURDAY 20th JULY AND SUNDAY 21st JULY

BEDFORD RIVER FESTIVAL



The Mayor of Bedford Cllr Tom Wootton, above, visited the Family Area in St Mary's Gardens during the Bedford River Festival.

The Russell Park Stage was a popular venue for local artists including Song Squad, left.

The High Street was an exciting spot for motor enthusiasts with its display of vintage vehicles.

**BEDFORD RIVER FESTIVAL COVERAGE
ON PAGES 18-20**

SATURDAY 20th JULY AND SUNDAY 21st JULY

BEDFORD RIVER FESTIVAL



Highlights at the Bedford River Festival included performances on the main stage adjacent to the River Great Ouse, rides in Russell Park, dragon boat racing near St Mary's Garden and kayaking in the Sports Village.

**BEDFORD RIVER FESTIVAL COVERAGE
ON PAGES 18-20**

SATURDAY 20th JULY AND SUNDAY 21st JULY

COLMWORTH BREAKFAST CAR CLUB



The Colmworth Car Breakfast Club takes place once a month - on the first Sunday - between April and October at Colmworth Village Hall from 9am.

The highlight is the vast collection of cars and bikes with proceeds from the breakfasts going towards Friends of St Denys Church.



SUNDAY 7th JULY



SARTORI WELLNESS

Therapeutic Massage

Feeling tired, stressed, stiff aching muscles, do you work on your feet all day?
Come unwind and relax with a therapeutic massage.

Choose from a Thai Foot Massage, Indian Head Massage or Tension Relief Massage.
Fully qualified and insured. Ladies Only. Based Rushden Northamptonshire

Contact Mary To Book

Tel: 07464 100195

Email: sartoriwellness@gmail.com

www.facebook.com/sartoriwellness



SARTORI
WELLNESS

PLEASE SUPPORT OUR ADVERTISERS

GRUNCH NEWS

□ The Village Show at Keysoe will take place on Saturday 7th September at Keysoe Village Hall.

It has been announced that there will be the return of the Scarecrow Competition, which was a key feature in the pre-Covid years.

It is likely the showing of vegetables will be popular along with the crafts and paintings/ photos.

To be part of this Show by placing an exhibit please ensure you get a Schedule as follows: search for the Village Show at Keysoe on Facebook or contact Penny on 01234 378878 for a copy.

□ The All Saints Church Renhold will be holding a Family Car Treasure Hunt on Saturday 10th August from 11am. The cost will be £20 per car.

□ All Saints Church, Renhold hold a Pop Up Coffee Shop on the second Saturday of each month from 10am to noon. The next one is scheduled for 10th August.



● A Jumble and Table Top Sale was held at Thurleigh Village Hall on 27th July. The Hall, which has a sprung dance floor, is available for hire. Contact Jane on 07817 226154.



Telephone 01234 709163
or 07899 016129



Qualified Chimney Sweep



- Riseley based professional Chimney Sweep.
- Fully qualified member of The Guild of Master Sweepers.
- Police CRB checked and £2 million liability insurance.
- Service reports that are recognised by all insurance companies.
- Specialist equipment used for Woodburning Stoves & Lined Chimneys.
- Recommended by local Stove / Fireplace installers.
- CCTV inspections and reports.

Contact Tony, your local Chimney Sweep.

www.black-horse-chimney-sweep.co.uk

e-mail tnav59@btinternet.com

Sharnbrook
Gardening Club



VILLAGE
SHOW



Saturday 7th September
Sharnbrook Village Hall
2.00pm



Entry: Adults 50p
Children Free

MILTON ERNEST FETE



Clapham's Power Dance Academy provided some excellent entertainment at the Milton Ernest Fete.

Races for all ages were also held along with a tug-of-war display.

Craft stalls had a good trade in the All Saints Church while local cider was also consumed.

SATURDAY 29th JUNE



**93A High Street, Rushden
NN10 0NZ**

01933 350866

app.timbrownsbutchers.com

enquiries@tebrownbutchers.co.uk

**Beef, Lamb, Pork, Chickens, Sausages, Bacon
and so much more**



HARROLD SUMMER FOLK FESTIVAL



● Excellent entertainment was provided by three talented artists at the Harrold Summer Folk Festival on 13th July. Those performing were Lizzy Hardingham, Melody Coles and Elizabeth & Jameson. A brilliant BBQ was also served. 1qq

Bedford Borough Council - Rural Bulky Skips Placements 2024						
Village	Date	Start	Finish	Location 1	Location 2	Location 3
Bromham	11 May 2024	08:00	12:30	Village Hall Car Park (08:00-12:30)		
Blidsingham	11 May 2024	13:00	16:00	Beckingham Pasture (13:00-16:00)		
Clapham	11 May 2024	08:00	11:00	Tarnsted Road (8:00-11:00)		
Oakley	11 May 2024	11:30	15:30	Raynes Drive (11:30-15:30)		
Wiltstead	18 May 2024	08:00	10:00	Lay-by, Bedford Road near the Recycling Banks (08:00-10:00)		
Wixams	18 May 2024	10:15	12:15	Dane Lane (10:15-12:15)		
Elstow	18 May 2024	13:00	15:30	Abbeyfields, Layby outside Elstow Primary School (13:00-15:30)		
Wootton	18 May 2024	08:00	12:00	The Barn Road (08:00-12:00)		
Great Denham	18 May 2024	13:00	15:30	Great Denham, near First Roundabout (13:00-15:30)		
Turvey	25 May 2024	08:00	10:15	Turvey Football Club- Grove road (08:00-09:00)	Station End (09:15 - 10:15)	
Stagsden	25 May 2024	10:30	12:00	Wick End Junction Main Road (10:30-12:00)		
Carlton & Chillington	25 May 2024	08:00	10:00	Entrance to Village Hall (08:00-10:00)		
Pavenham	25 May 2024	10:30	12:00	The Bury (10:30-12:00)		
Stavington	25 May 2024	13:00	15:00	Playing Fields (13:00-15:00)		
Cotton End & Shortstown	08 June 2024	08:00	15:30	Layby on Wood Lane, Cotton End (8:00-12:00)	Beacons Square, Shortstown (12:45-15:30)	
Sharnbrook	08 June 2024	08:00	11:30	Station Road (Top End) (08:00-09:30)	School Approach (09:45 - 11:30)	
Bletsoe	08 June 2024	11:45	13:45	School House Layby (11:45-13:45)		
Harrold	08 June 2024	14:00	15:00	Peaches Close (14:00-15:00)		
Great Barford	15 June 2024	09:30	12:00	Village Hall Car Park, Fisher Close (9:30-10:30)	Pym's Close (10:45-12:00)	
Renhold	15 June 2024	08:00	00:00	Layby outside 3-6 Wilton Road (8:00-8:00)		
Ravenston	15 June 2024	13:00	15:00	Adjacent to the Horse and Jockey Pub and Vicarage Close Junction (13:00-15:00)		
Babburton & Keysoe	15 June 2024	08:00	10:00	Village Hall Car Park, Keysoe Road West (8:00-10:00)		
Rosely	15 June 2024	10:30	12:45	Village Hall Car Park, Gold Street (10:30-12:45)		
Oslet	15 June 2024	13:15	14:30	Village Green near The Bell Pub (13:15-14:30)		
Little Barford	22 June 2024	08:30	09:30	Adjacent to School (08:30-9:30)		
Wyboston, Chawston & Coltedon	22 June 2024	10:00	12:00	Village Hall, Wyboston (10:00-12:00)		
Raxton	22 June 2024	13:00	14:30	Persh Hall Car Park (13:00-14:30)		
Knottling & Soulbury	03 August 2024	08:00	10:30	Knottling Green (08:00-09:00)	Bouldrop, near The Green (09:30-10:30)	
Milton Ernest	03 August 2024	11:00	12:30	Village Hall (11:00-12:30)		
Thorleigh	03 August 2024	13:30	15:30	Layby adjacent to Numbers 3&5 The Close (13:30-15:30)		
Fettersham & Radwell	03 August 2024	08:00	12:00	The Green, Radwell (8:00-10:00)	Marmitts Close, Fettersham (10:30-12:00)	
Widley	03 August 2024	13:00	15:30	The Victoria Arms PH, adjacent to The Green (13:00-15:30)		
Podington	10 August 2024	08:30	12:00	Humban Close (08:30-12:00)		
Wymington	10 August 2024	13:00	15:00	Memorial Hall, Car Park (13:00-15:00)		
Little Staughton	10 August 2024	08:00	10:00	Grays Grove (08:00-10:00)		
Colworth	10 August 2024	10:30	15:00	Channels End Road (10:30-12:00)	Little Staughton Road (13:00-15:00)	
Kempston Rural	17 August 2024	08:00	10:00	Ridge Road (08:00-10:00)		
Stewartby	17 August 2024	10:30	15:30	Alexander Close (10:30-12:30)	Piling Road / Magoo Avenue Junction (13:00-13:45)	Kin Drive (14:00-15:30)
Cople	17 August 2024	08:00	12:00	Junction of Rye Crescent & Willington Road (08:00-10:00)	Village Hall, Grange Lane, Cople (10:30-12:00)	
Carlington	17 August 2024	13:00	15:30	Pleasant Place (13:00-15:30)		
Willington	24 August 2024	08:00	09:45	Village Hall Car Park (8:00-9:45)		
Staploe, Duloe & Honeydon	24 August 2024	10:15	15:30	Entrance to Woodhouse Lane, Duloe (10:15-12:00)	Entrance to Falls Farmyard, Staploe (13:00-14:00)	Rear Driveway of 8 Chapel Close, Honeydon (14:30 - 15:30)
Perdenhall	24 August 2024	08:00	09:30	Village Hall (08:00-9:30)		
Dean & Shelton	24 August 2024	10:00	15:30	East of Bridge, Lower Dean (10:00-11:00)	Top of Shey Lane / High Street, Upper Dean (11:30-12:30)	Near Triangle, Shelton (13:30-15:30)
Swineshead	24 August 2024	08:00	10:00	Outside Village Hall (08:00-10:00)		
Matchbourne & Yelden	24 August 2024	10:30	15:00	Village Hall Car Park, Matchbourne (10:30-12:00)	Bottom Of Church Lane, Yelden (13:00-15:00)	

MELCHBOURNE SUMMER FAYRE



The Melchbourne Summer Fayre took place in the grounds of Melchbourne Park with the impressive house as the back drop.

Along with the wide variety of stalls and games, a highlight throughout the afternoon was the Family Dog Show.

And for the eagle-eyed, there was the Pimms tent.

**MELCHBOURNE SUMMER FAYRE
COVERAGE ON PAGES 28-29**



SUNDAY 6th JULY

MELCHBOURNE SUMMER FAYRE



Has there been a rebrand of the traditional summer event at Melchbourne? Formerly known as the Feast Day it is now known as a 'Summer Fayre'. Is this for the benefit of modern day people?

**MELCHBOURNE SUMMER FAYRE
COVERAGE ON PAGES 28-29**

SUNDAY 6th JULY

NEWTON BROMSWOLD FETE



The Newton Bromswold Fete shows how a small village can hold a brilliant event.

The weather on the day remained fine although the organisers were probably worried about the storm during the night prior to the event.

However, the skies were kind to allow the sizeable crowd to enjoy games such as the Bell Tower, where competitors had to aim a bean bag through the rungs of a ladder.

The Rushden Mission Band provided the musical entertainment while the Rushden Town Mayor Cllr David Coleman was in attendance.



COVERAGE ON PAGES 30-31

SATURDAY 6th JULY

NEWTON BROMSWOLD FETE



One of the most popular stalls at the Newton Bromswold Fete was the Coconut Shy. The gentleman, above and right, was a winner. The first picture shows him about to aim. Then we see his coconut hitting the target then the celebrations as if he had won a general election.

Popular artist David Hawker did several portraits while the highlight of the afternoon was the Children's Fancy Dress.

And there were several stalls selling a variety of items including plants.



COVERAGE ON PAGES 30-31

SATURDAY 6th JULY

KIMBOLTON COUNTRY FAYRE & CLASSIC CAR SHOW



The Kimbolton Country Fayre & Classic Car Show was again organised by the local rotary club, raising funds for local charities.

Held in the grounds of Kimbolton Castle, there was plenty to entertain all the family.

The classic cars, dotted around the site but mainly in front of the Castle, attracted the vehicle enthusiasts.

A boulevard of stalls proved to be popular especially the home made brown bread and samosas.

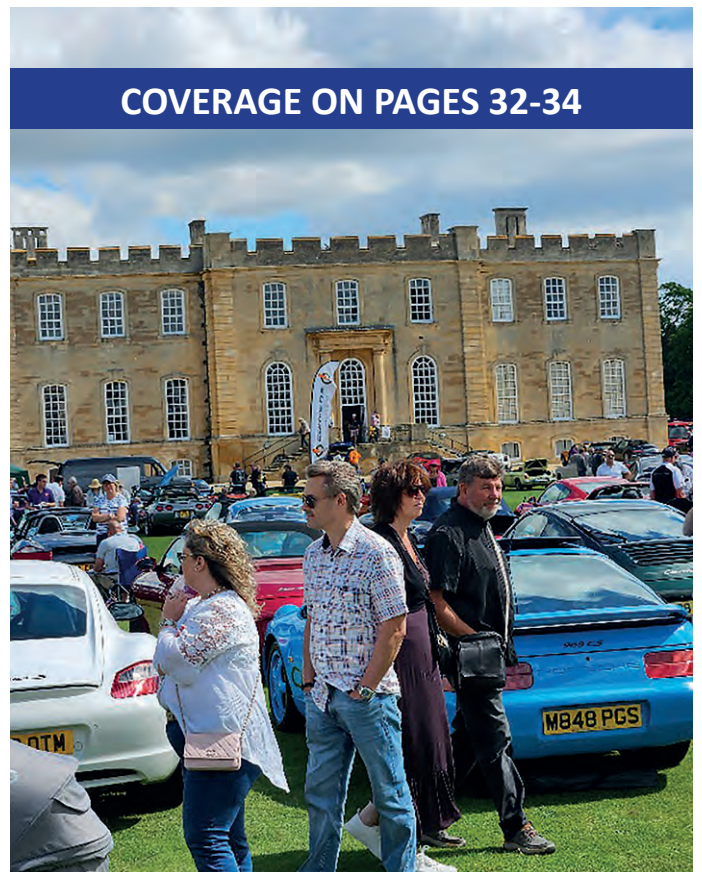
The main arena hosted various activities throughout the day while the street food, with musical entertainment close by, was equally popular.



COVERAGE ON PAGES 32-34

SUNDAY 14th JULY

KIMBOLTON COUNTRY FAYRE & CLASSIC CAR SHOW



COVERAGE ON PAGES 32-34

SUNDAY 14th JULY

KIMBOLTON COUNTRY FAYRE & CLASSIC CAR SHOW



COVERAGE ON PAGES 32-34

SUNDAY 14th JULY

GRUNCH NEWS

□ The Soukldrop Charity Horse Show and Family Dog Show at Colworth takes place on Sunday 18th August. The event is being held to raise money for The Brooke, a hospital for animals. Funds will also go towards Chestnut House, supporting families of sick children being treated at The Rosie 'Home from Home' Unit within Addenbrookes Hospital.

□ The summer fete season is now coming to a close and the focus after the holiday season will be the autumn shows. They begin on 7th September with the Dean & Shelton Country Show along with the Village Show at Keysoe. The Riseley Show takes place on Saturday 14th September with a new organising team.

□ The Bedfordshire Steam Rally and Country Fayre takes place at Turvey Park during the weekend of Friday - Sunday 13th-15th September. This is a fascinating show featuring many vintage vehicles. There will also be many displays in the main ring. For the youngsters, a traditional fun fair is always popular.



● The showing of vegetables will be one of the highlights at the Dean & Shelton Country Show on Saturday 7th September.

BRIDGET'S COCKTAIL COLUMN



TEQUILS MANHATTAN

Ingredients and Method

Place ice in a stirring glass.

Add 2 splashes of Angostura bitters

¾ fluid oz sweet vermouth

1½ fluid oz tequila (blanco)

Mix together in the stirring glass and strain into iced cocktail glass..



Thanks to Star Trek actor Casey Biggs

NEWTON BROMSWOLD BARN DANCE



Popular band Kelly's Eye provided the music for the popular Newton Bromswold Barn Dance.

Many of the traditional dances were performed with those taking part having plenty of laughs as they tried the various moves.

A ploughman's type supper was served at the interval.

Coverage on Pages 36-37

SATURDAY 20th JULY

NEWTON BROMSWOLD BARN DANCE



Coverage on Pages 36-37



SATURDAY 20th JULY

GRUNCH RECIPES

OUR FAVOURITES

White Chocolate and Raspberry Cheesecake Mary Berry Everyday

150g digestive biscuits
60g butter plus extra for greasing
1tbsp demerara sugar
200g white chocolate
1 x 250g tub of full fat mascarpone cheese
300ml pouring double cream
1tsp vanilla extract
500g fresh raspberries

□ Butter the base of a 20cm spring-form tin and line with a disc of baking paper. To make the base, measure the biscuits into a resealable freezer bag and use a rolling pin or the base of a saucepan, to crush into fine crumbs, but still with a bit of texture.

□ Heat the butter in a small saucepan over a low heat until just melted. Add the crushed biscuits and sugar and stir until combined. Spoon into the base of the prepared tin and press with the back of a spoon until level. Chill in the fridge while you make the topping.

□ Break the chocolate into a separate bowl and sit it on top of a pan of simmering water. Stir until melted but not hot, then leave to cool down for 5-10 minutes until cool but still liquid.

□ Meanwhile tip the mascarpone into a bowl and mix with a spatula to loosen so it is soft. Stir in the cream and vanilla extract until smooth.

□ To make a coulis for the top of the cheesecake, place half the raspberries into a small blender. Add the icing sugar and whizz until runny then sieve.

□ Pour the melted chocolate into bowl with mascarpone mixture and stir to combine. Spoon half the white chocolate mixture on to the biscuit base. With the end of a teaspoon create some small holes and fill with the coulis. Add the remaining mixture and top with the remaining raspberries.

GP SERVICES GROUNDWORK AND DIGGER HIRE



- Mini Digger and Driver Hire
- Various Size machines
- Breaker/Auger Attachments
- Dumper Hire
- Foundations/Concreting/Drainage
- Site Clearance
- Tree and Root Removal
- Sewage Treatment Plants Installed
- Leach Fields Installed
- Road Construction/Drives
- Patios/Hard Landscaping
- Menage/Horse Arena Construction
- Muck Heap Removal
- Fencing

01234 782940
07932 002937

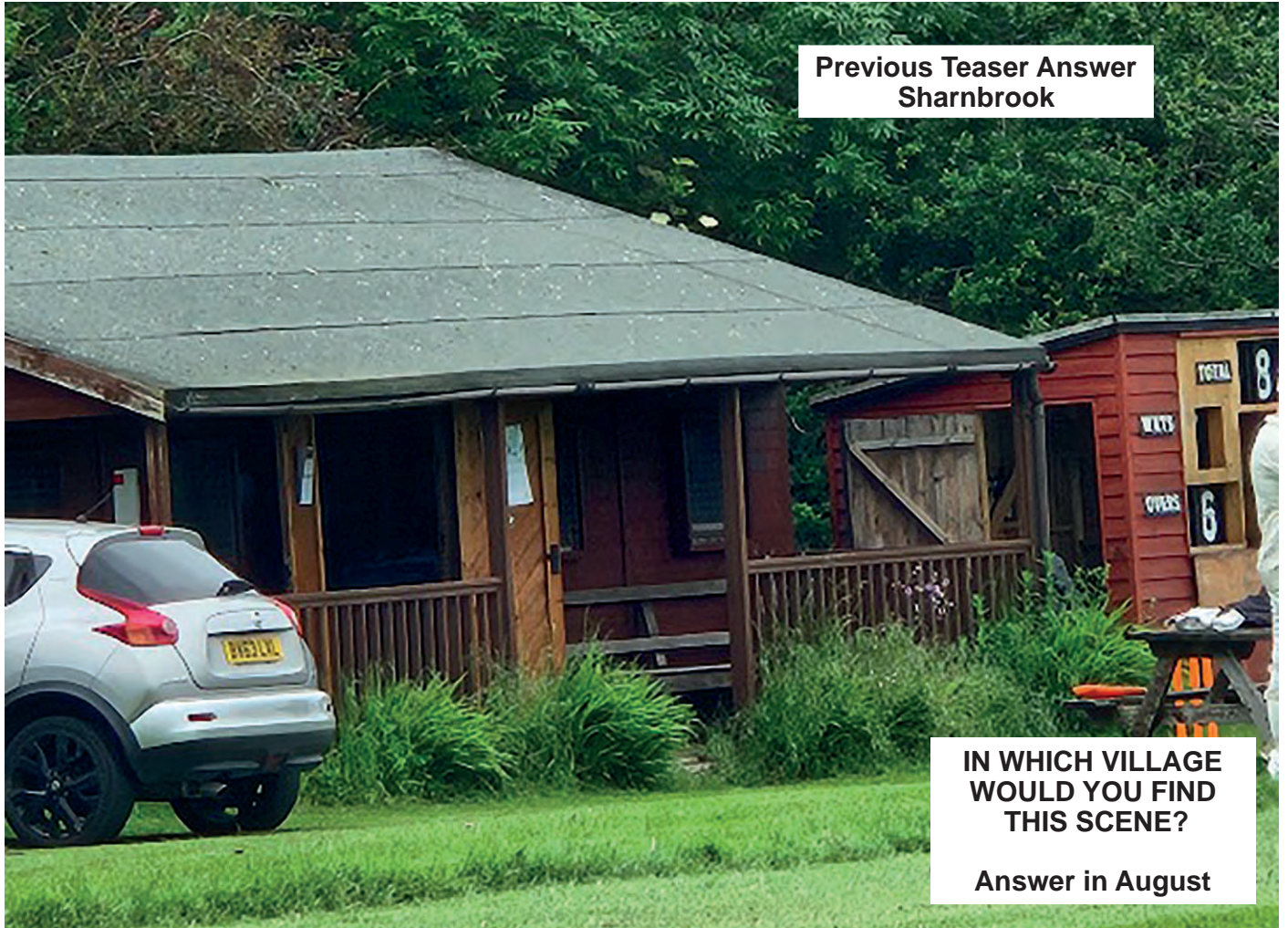
enquiries@gpservicesonline.com
www.gpservicesonline.com

PETER HAYES
PROPRIETOR

FULLY INSURED

GRUNCH TEASER

Previous Teaser Answer
Sharnbrook



IN WHICH VILLAGE
WOULD YOU FIND
THIS SCENE?

Answer in August



ABACAB DOG GROOMING

New dog grooming service in Odell. We offer a personal service aimed to meet the needs of you and your dog, catering for all breeds large or small. Our services include:-

- Clipping/trimming
- Hand stripping (Terriers and Spaniels)
- Nail trims

TELEPHONE:- 01234 720825 OR 07860 837043

SJ TAX & ACCOUNTING SERVICES

QUALIFIED ACCOUNTANT
FCCA ATT

Professional and friendly service
Sole Traders, Limited Companies
Partnerships, Business Start-ups
Bookkeeping, Payroll, CIS
Subcontractors
VAT & Tax

sally@sjtax.co.uk
01234 831997
07899 808592

RENHOLD PRIMARY SCHOOL FETE



This was another fantastic effort by the Friends of Renhold Primary School.

Crowds flocked to the Renhold Primary School Fete, which followed the theme of 'Something for the Summer'.

There was something for all the family with games for the youngsters and a Pimms Bar for those a little older plus a BBQ.

The soft-play area was well used by the young including a battle to see who would fall first.

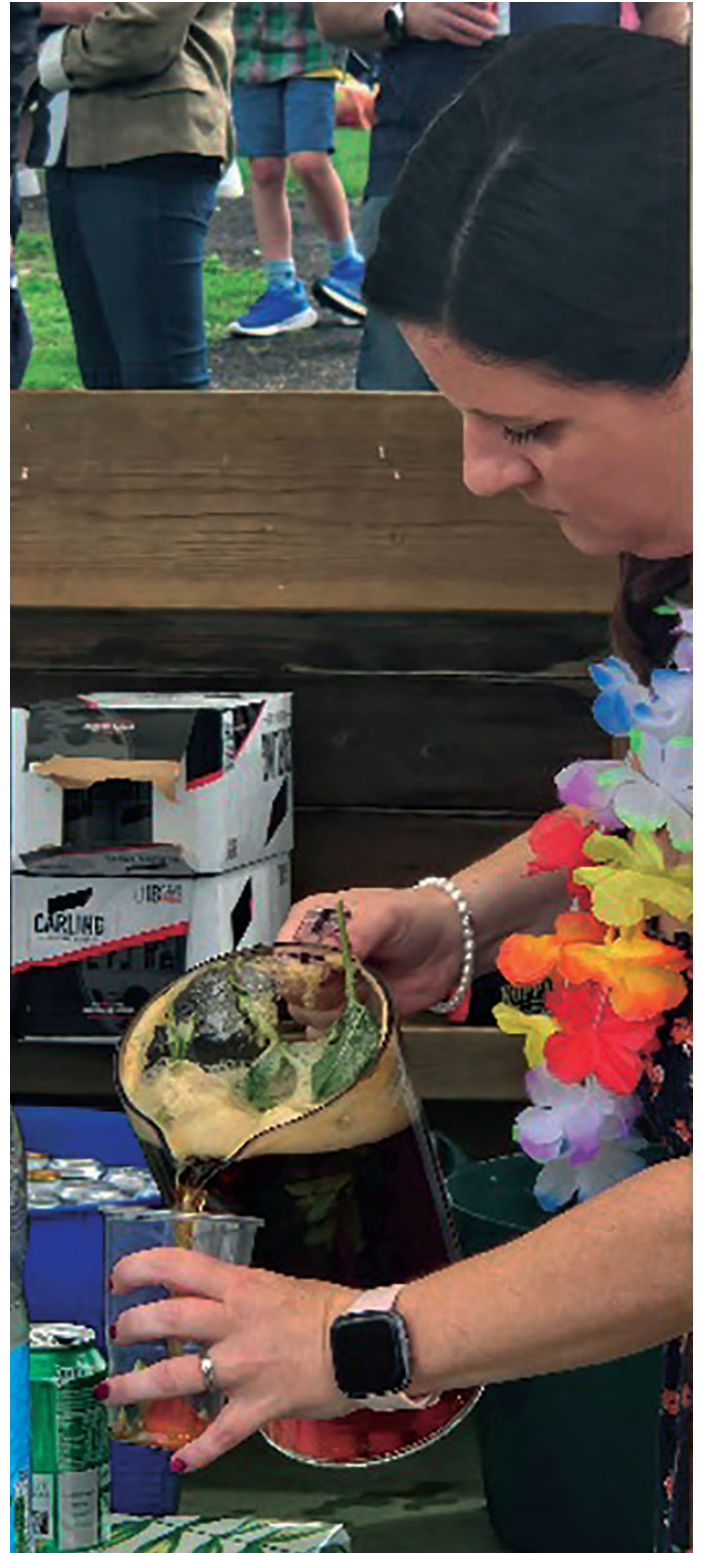
And in attendance was the popular 'Man on Stilts' while there was an opportunity to browse the various stalls.

This included Loki's Chew Crew, a new business owned by Steph Jacobs selling dog treats.

RENHOLD PRIMARY SCHOOL FETE
COVERAGE ON PAGES 40-41

SATURDAY 23rd JULY

RENHOLD PRIMARY SCHOOL FETE



RENHOLD PRIMARY SCHOOL FETE
COVERAGE ON PAGES 40-41

SATURDAY 23rd JULY

FOCUS ON THE RISELEY SHOW



After more than a decade in the role, Judith Wright has stepped down as organiser of The Riseley Show.

Judith rebuilt the event from scratch and turned it into one of the best occasions in north Bedfordshire.

However, the future is in good hands as a trio of well-known faces in the village have taken on the responsibility of organising the events on the field at this year's show on 14th September - **Nicky Perfect, Karen Aves and Sharlene Taylor.**

Sharlene said: "This year, we are aiming to showcase everything that makes Riseley so special. From our fantastic local groups to the vibrant community spirit, we want to celebrate it all.

"We want to have all of the incredible Riseley groups to come together for a day of fun and festivities.

"We appreciate not all groups are able to have a stall.

"If that is the case we would like to showcase your group as part of our visual display. This will include all the different groups in Riseley.

For further information on how you can get involved email:

riseleyvillageshow@outlook.com



THE RISELEY SHOW

SATURDAY 14th SEPTEMBER

PUT THE DATE IN YOUR DIARY

GRUNCH THEATRE

Mama G: The Magic Bookmark
Produced by Petite Pantos
The Place, Bedford
8th August
2pm

Tickets: £12 Concessions: £8 Family: £32

Audiences are invited to join Britain's Got Talent semi-finalist Mama G on a brand new panto adventure for the whole family!

It all starts when the evil Book Worm decides that reading gives people too much knowledge, and makes all the books from Mama G's library disappear.

Before the world can turn to chaos, Mama G vows to save the day by finding three books that will help make the world a better place. Of course, she can't do it alone and that's when she discovers the mysterious and wonderful Magic Bookmark...



FOR FURTHER DETAILS CONTACT THE PLACE BEDFORD
www.theplacebedford.org.uk or phone 01234 354321

GRUNCH THEATRE

Nan, Me & Barbara Pravi
Hannah Maxwell Presents
The Place, Bedford
16th August
7.30pm

Tickets: £16 Concessions £13

Critically-acclaimed memoir of care, crisis and Eurovision.

“I wish I could say here our story starts. But this story starts later, and ended earlier. Is entirely fictional, and completely true. Voila.”

In 2021, Hannah Maxwell moved back to the Home Counties to care for her terminally ill grandfather.

But this show isn't about that. It's about France's Eurovision star Barbara Pravi, who's just lovely.

In between cooking, cleaning and Countdown, Maxwell escapes into an intensifying fantasy of ballroom dances, heartfelt ballads, Parisian

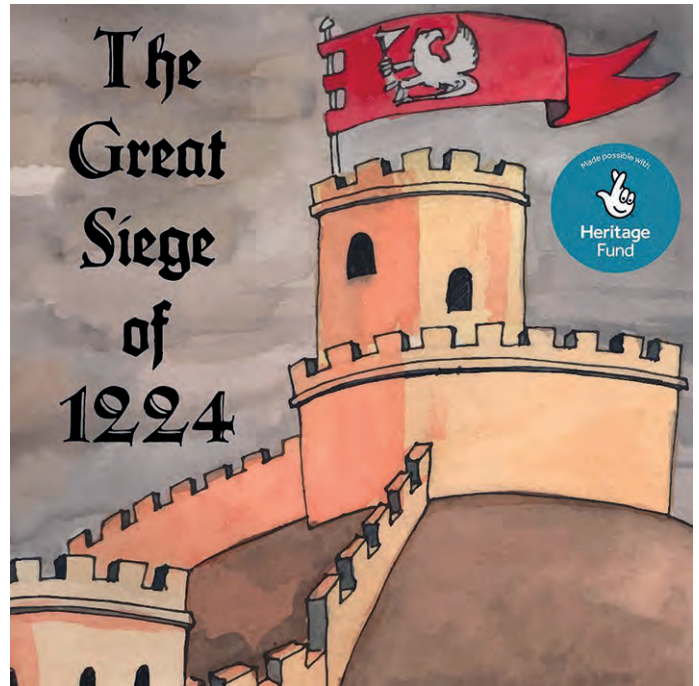


cafés, fluent French and definitely-not-creepy plots to engineer a meetcute with a random foreign celebrity. It's La La Land meets Mission Impossible meets Hannah's nan.

FOR FURTHER DETAILS CONTACT THE PLACE BEDFORD
www.theplacebedford.org.uk or phone 01234 354321

GRUNCH THEATRE

*The Great Siege of 1224 -
The Fall Of Bedford Castle
Produced by Bedford Theatre Trust
Castle Mound, Embankment, Bedford
24th-25th August
2pm and 6pm
Tickets: Free - Must be booked*



In August 1224, with the whole of Europe watching, 16-year-old King Henry III marched on Bedford with siege engines and around 2,700 soldiers to bring down his father's mercenary, Falkes de Breauté the Castellan of Bedford Castle.

At the end of an eight-week siege, Henry ordered the destruction of the Castle and decreed that no fortification would again be built upon the site. Almost 800 years to the day that the siege ended we will bring to life the characters who defended and destroyed the Castle on the very spot where the drama of 1224 unfolded.

**FOR FURTHER DETAILS CONTACT THE PLACE BEDFORD
www.theplacebedford.org.uk or phone 01234 354321**

GRUNCH THEATRE

*Mona From Scratch
Produced by Mona
The Place, Bedford
24th August
7.30pm
Tickets: £7*

From Scratch is Bedford's very own short-play Scratch Night, aiming to provide a platform for new and upcoming artists to share their work.

Playwrights, directors and actors will have the opportunity to showcase their talents as we stage a series of short plays in the legendary Place Theatre.

We invite you for an evening of raucous fun with a line-up of brand, spanking new short plays to keep you entertained.



**FOR FURTHER DETAILS CONTACT THE PLACE BEDFORD
www.theplacebedford.org.uk or phone 01234 354321**

GRUNCH CRICKET

Bedfordshire Invitation League: Riseley suffered a 107-run defeat at Clifton II in **Division Two** after being bowled out for 125 on **27th July**.

Dan Bennett top scored with 63 while his brother Sam made 48 before the lower order collapsed with the other batsmen only scoring six runs between them including three from opener Matt Jenness while extras totalled eight.

Earlier, Clifton made 232-9 with Joe Williams taking 5-36.

Harrold II defeated Road Runners by one wicket. **See Picture Coverage on Page 46.**

Bedfordshire County Sunday League: Harrold clinched a 76-run victory on **28th July** over Eversholt, who were bowled out for 104, chasing the hosts' 180.

FIXTURES - 3rd AUGUST

Northamptonshire League Division Five: Thurleigh v Overstone Park III

Four Counties League Division One: Sharnbrook/Bromham v Cranfield University
Division Three: Harrold v MK Stallions

Bedfordshire Invitation League Division Two: Ampt Hill Town III v Harrold II; Riseley v Clifton II

FIXTURES

10th AUGUST

Northamptonshire Cricket League Division Five: New Bradwell v Thurleigh

Four Counties League Division One: Luton Caribbean v Sharnbrook/Bromham. **Division Three:** Harrold v Milton Keynes II

Bedfordshire Invitation League Division One: Pavenham/Felmersham v Kempston Hammers; Wilden v Kempston Methodists. **Division Two:** Clifton II v Thurleigh II; Riseley v Harrold II

FIXTURES - 11th AUGUST

Bedfordshire Sunday League Division Two: Harrold v Letchworth Garden City.

Every Voice Choir

presents our

Summer Charity Concert

Change of date! Saturday 14th September
2024 7:30 pm

At Saint Peter's Church
Thurleigh. £8 per adult,
children who can sit quietly
free. Tickets are available on
the door. Cash only

All ticket, raffle, and refreshment
proceeds to 'Creating Memories'
charity for local terminally ill
children and those with life
limiting conditions, and Saint
Peter's church fund

DAILY GRUNCH TEST MATCH

*Harrold II 130-9 beat
Road Runners 128 by 1 wicket*



Harrold II pulled off a nailbiting one-wicket victory over Houghton Regis side Road Runners in the Bedfordshire Invitation League Division Two on 27th July.

The win was secured by an unbeaten 40 from Will Carr as the hosts scrambled home on 130-9 with the last pair putting on an unbeaten 27 runs.

Carr also took 5-21 as Road Runners were bowled out for 128.

GRUNCH CRICKET

NORTHAMPTONSHIRE LEAGUE: Thurleigh have closed the gap on **Division Five** leaders New Bradwell to three points following the round of matches on **27th July**.

The Yellow Caps managed to pick up a six-wicket away victory against Loddington & Mawsley II while New Bradwell suffered a 60-run defeat at home to MK Air.

All-rounder Rob Pryor produced a tidy spell of slow bowling to take 3-29 from his ten overs as the hosts were dismissed for 170.

The other notable performances in the field came from Brody Willerton and Sam Richardson, who both took two wickets.

The target posed few problems for Thurleigh as opener Chris Wood played a stylish 97 and was given good support from youngster Sam Richardson, who made 30. After the excellent opening stand, several wickets fell in quick succession but big-hitter Andy Milne saw the visitors home for the win with an unbeaten 14.

FOUR COUNTIES LEAGUE: Sharnbrook/Bromham remain in second place in **Division One**, only 13 points behind Luton Caribbean.

The Lodge Road side put in an impressive performance at Buckland/Aston, clinching an 112-run victory.

Although no-one scored a half-century, Sharnbrook/Bromham were still able to post a challenging 203-8.

Arran Peters top scored with 43 while fellow opener Bipin Nair weighed in with 36 runs.

Daniel Barratt hit 37, one more than all-rounder Gareth Alred, who also took three wickets, conceding only 19 runs, as the hosts were bowled out for 91. Charlie Clark also showed good form with the ball with 3-34.

Harrold conceded their **Division Three** match at Grumpy Monks despite making 179. Opener Simon Pritchard top scored with 68.

www.ousevalleyphysio.co.uk

Claudia von Caron PHYSIOTHERAPIST

- Back pain & sciatica
- Neck & shoulder pain
- Whiplash & headaches
- Sports injuries
- Work related disorders
- Repetitive strain
- Injuries to joints & soft tissues
- MS & stroke

Mrs Claudia von Caron MCSP, Chartered Physiotherapist

Ouse Valley Physiotherapy Practice
3 The Drive, Sharnbrook, Bedford MK44 1HU
claudia@ousevalleyphysio.co.uk

Call 01234 781777



BODY



HARMONY



SHARNBROOK BOWLS CLUB

MONDAY EVENING ACTION



There was plenty of activity on the green at Sharnbrook Bowls Club during the evening of 10th June.

A key interest was the Bedford Men's Bowls League match between Sharnbrook A and Meltis but as we went to press - old fashioned term - no result had been recorded.

However, we know that Sharnbrook A were looking for their first win of the

season in Division One having lost previously to Wilstead C and Kempston Hammers.

On this evening, Sharnbrook B were drawing 13-13 at Bedford Borough while the C team

went down 39-29 in their away match at Wilstead A.

Along with the men's encounter at Lodge Road,, there was also a women's singles match taking place.

MONDAY 10th JUNE

SHARNBROOK BOWLS CLUB

COUNTY CHAMPIONSHIPS



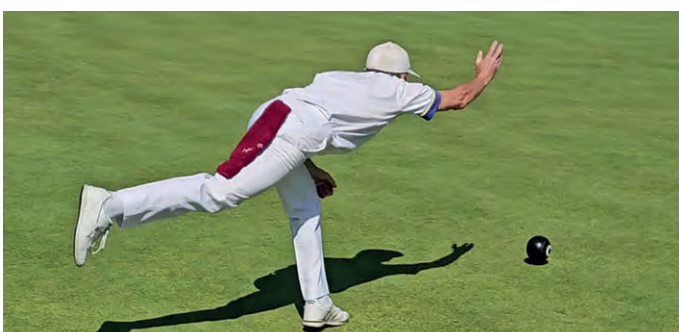
Sharnbrook Bowls Club Triples Team - from left to right: David Payne, Andrew Manning and skip Chris Beard



DAVID PAYNE



CHRIS BEARD



ANDREW MANNING

Sharnbrook Bowls Club completed the double at the Bedfordshire County Finals by taking the triples and singles titles. Played at Maulden, the triples trio of David Payne, Andrew Manning and skip Chris Beard had a nailbiting 19-18 victory over Sandy Conservatives. Chris Beard then won the singles crown with a 21-11 triumph over Luton Town's Paul Murray. Sharnbrook will now be competing in the Nationals at Leamington during August.

FOCUS ON THE POLDEN CUP

On Sunday 25th August, The Polhill Arms 'Renhold Renegades' cricket team will again be going into battle against the mighty Wilden Cricket Club, this year looking for revenge from the closely-fought match of last season.

Players will be competing for commemorative tankards, so we expect some exciting action on (and off) the field in what promises to be another highly entertaining afternoon.

The customary post-match award ceremony will be hosted by The Polhill Arms in Renhold, with a delicious BBQ provided by the always reliable team at Appy Days Catering.

Match format is 20 overs per side with the game beginning at 12-30pm at the Shrubbery Lane Oval in Wilden.

Another large crowd is expected, and all are invited to join in the afternoon's entertainment and festivities.

So, pack yourself a picnic, grab some refreshments, and come along to support the newly-formed local village tradition as it strides into its second season.

We look forward to seeing you all there.



The pictures on this page show the inaugural Polden Cup between Wilden Cricket Club and the Polhill Arms, now also known as the 'Renhold Renegades'.

Wilden won the first clash by six runs on a fun afternoon, which carried on into the evening.





Soulbrook
Property Services

Extensions



Renovations



Carpentry & Joinery



Bathrooms



Kitchens

01234 782558

07731 818990

www.soulbrook.co.uk