

# THE DAILY GRUNCH

SERVING VILLAGE COMMUNITIES IN NORTH BEDFORDSHIRE

Produced by Grassroots Publications  
Previously The Rural Grunch  
07725 812963

Email: [dailygrunch@outlook.com](mailto:dailygrunch@outlook.com)

Web: [www.grassrootspublications.co.uk](http://www.grassrootspublications.co.uk)

VOLUME 2 - ISSUE 161

30th September 2024

## THE FLOOD AT OAKLEY BRIDGE

**THEATRE  
COVERAGE**

**SEE PAGES 34-35**

**SPORTS  
COVERAGE**

**SEE PAGES 36-42**

# PAGE CHANGES TO THE ONLINE DAILY GRUNCH

To assist our readers we have expanded our Key Changes section.

This allows regular readers to see what has changed at a glance in the editions that they may have missed.

SEE RATE CARD ON PAGE 3

**Front Cover:** *Flooding at Oakley Bridge after heavy rain towards the end of September*

*Picture: Graham White*

## CONDITIONS OF ACCEPTANCE

Although every effort will be made to meet advertisers wishes, the publishers do not accept responsibility for inaccuracies in advertisements or in consequences arising, nor do they guarantee the insertion of any advertisement on a specified date, or in a specified section of the paper.

Furthermore, the publishers do not accept any responsibility for one or more of a series of advertisements being omitted for any cause whatsoever. They reserve the right to amend or omit or reclassify or suspend any advertisement previously ordered without giving a reason or prior notice to the advertiser. No responsibility is accepted for the loss or damage to copy, or error in the printing. It is the responsibility of the advertiser to ensure conformity with the Trade Description Act 1968, Sex Discrimination Act 1975 and Business Advertisements (Disclosure Order 1977). All advertisements are accepted in good faith. Placing an order with THE DAILY GRUNCH will signify acceptance of the above conditions.

Artwork forming part or whole of any advertisement prepared by THE DAILY GRUNCH on behalf of any advertiser may not be used in any other publication whatever without permission of the publishers.

## KEY CHANGES TO THE DAILY GRUNCH FROM THE LAST ISSUE

30th September: *Page 1*

29th September: *Page 17*

28th September: *Page 23*

27th September: *Page 35*

26th September: *Page 37*

25th September: *Page 41*

24th September: *Page 42*

23rd September: *Page 17*

22nd September: *Page 16*

21st September: *Page 17, Page 35*

20th September: *Page 23*

**AS ALWAYS WE ENCOURAGE YOU TO SEND US YOUR NEWS AND DETAILS OF ANY EVENTS YOU MAY BE HOLDING.**

*Email us at*

[dailygrunch@outlook.com](mailto:dailygrunch@outlook.com)

**Deadline: Approx two working days before publication - for example Friday = 10am Wednesday**

# WELCOME TO THE DAILY GRUNCH

**It will be four years on 12th April since we launched the online Daily Grunch.**

This replaced the traditional Rural Grunch, which we had published and printed since March 2009.

We made the decision to go online following the Covid 19 Lockdown that came into effect on 23rd March 2020.

After Covid 19, the UK has suffered a cost-of-living crisis and it is safe to say we would not have been able to continue the magazine in its traditional form due to the increase in prices for paper and print.

As indicated in its title, we are able to update the online magazine on a daily basis and we do this 300 times a year.

This allows us to give coverage of local community events almost immediately after they have taken place rather than wait up to 31 days, which was the case with the printed monthly issue.

The same applies with advertising as we can insert material almost as soon as we

receive the copy. The online magazine is also in colour, which makes our coverage of community events more attractive.

Our goal remains the same - supporting community events and small businesses.

You will have noticed on our access page - [www.grassrootspublications.co.uk](http://www.grassrootspublications.co.uk) - that we have produced a number of supplements.

The Summer 2023 includes a record of community events during the first part of last year while the Autumn 2023 does likewise up to Christmas.

We are aiming to produce similar publications for 2024.

We have also set up a Business and Community Directory. Please contact us at [dailygrunch@outlook.com](mailto:dailygrunch@outlook.com) for further information including rates for the Directory.

See below for The Daily Grunch Rate Card.

**Graham White**

## RATE CARD ADVERTISING PRICES

FROM 8th APRIL 2024

**Full Page:** 30p per issue  
**1/2 Page:** 18p per issue  
**1/4 Page:** 12p per issue

Community Rates: 50% Discount

Invoicing every 100 issues. 300 issues per annum.

All Prices ex-VAT

**For further information and to place advertising:** [dailygrunch@outlook.com](mailto:dailygrunch@outlook.com)

**AS ALWAYS WE ENCOURAGE YOU TO SEND US YOUR NEWS AND DETAILS OF ANY EVENTS YOU MAY BE HOLDING.**

*Email us at*

[grassrootspublications@btconnect.com](mailto:grassrootspublications@btconnect.com)  
[ruralgrunch@btconnect.com](mailto:ruralgrunch@btconnect.com)

**Deadline: Approx two working days before publication - for example Friday = 10am Wednesday**

# TAKE A SHORT CUT BY SUE

Many people are now reading The Daily Grunch but for some it is a new experience.

For a few, it may be too many clicks or you cannot remember the name of the website.

There is a little trick:

Go to the [www.grassrootspublications.co.uk](http://www.grassrootspublications.co.uk) Home Page where the link to The Daily Grunch is located. In the top right hand corner of this page you will see 'three vertical dots'. Click on these and you will see a list of options.

Choose 'Add to Home Screen' and you should have an icon for Grassroots Publications in the favourites area or something similar on your device. Then any time you want to access The Daily Grunch you only have to click on this icon to take you to the link.

If you want to find a specific article in The Daily Grunch try this



Ctrl + F to find the subject/word you are looking for. This avoids trying to find the elusive article.

**For example:** Open The Daily Grunch – Press **Ctrl + F** which will open a small box, Type in the box the topic/number you are looking for. Say for example - 'Riseley' .

You will find 16 entries in the 27th October.2020 edition.

Sue  
[www.renholdvillage.co.uk](http://www.renholdvillage.co.uk)

## NEW YEAR'S RESOLUTION

### Why not try a walk with North Beds Ramblers?

We are a friendly group who walk on Saturdays:  
Every Saturday afternoon, approx. 6 miles

Saturday mornings, twice monthly, 10 -12 miles  
Just turn up wearing suitable footwear and clothing  
*Sorry only assistance dogs allowed*



We walk in all weathers,  
you may get wet and muddy!!

Bring refreshments  
(and plenty of water in the summer)



#### Interested?

Find our programme on the Ramblers website <https://www.ramblers.org.uk/north-bedfordshire>

Facebook <https://www.facebook.com/groups/northbedsramblers>

Twitter @nb\_ramblers

**Walks are free but if you decide to walk with us regularly we would like you to join the Ramblers**

The Ramblers' association is a registered charity (1093577) and a company limited by guarantee, (No.445892). Registered Office: 1 Clink Street, 3<sup>rd</sup> Floor, London. SE1 9DG

# Collection Calendar

Please ensure that your bins are out for collection by 6am on your collection day. Missed collections must be reported within 48 hours of your scheduled collection. Visit [www.bedford.gov.uk/recycling](http://www.bedford.gov.uk/recycling) to report a missed collection.



**Remember!**

Garden waste collections are suspended from 1<sup>st</sup> December to 1<sup>st</sup> March.

## December 2023 and January 2024 Date Changes

### Recycling only

Mon 25 Dec	moves to	Sat 23 Dec
Tues 26 Dec	moves to	Weds 27 Dec
Weds 27 Dec	moves to	Thurs 28 Dec
Thurs 28 Dec	moves to	Fri 29 Dec
Fri 29 Dec	moves to	Sat 30 Dec

### Rubbish only

Mon 1 Jan	moves to	Tues 2 Jan
Tues 2 Jan	moves to	Weds 3 Jan
Weds 3 Jan	moves to	Thurs 4 Jan
Thurs 4 Jan	moves to	Fri 5 Jan
Fri 5 Jan	moves to	Sat 6 Jan

### Key

**Red Outline =**  
Date Change

**Orange =**  
Recycling Only

**Purple =**  
Recycling and Garden

**Grey =**  
General Rubbish

### December 2023

M	T	W	T	F
				1
4	5	6	7	8
11	12	13	14	15
18	19	20	21	22
25	26	27	28	29

### January 2024

M	T	W	T	F
1	2	3	4	5
8	9	10	11	12
15	16	17	18	19
22	23	24	25	26
29	30	31		

### February 2024

M	T	W	T	F
			1	2
5	6	7	8	9
12	13	14	15	16
19	20	21	22	23
26	27	28	29	

### March 2024

M	T	W	T	F
				1
4	5	6	7	8
11	12	13	14	15
18	19	20	21	22
25	26	27	28	29

### April 2024

M	T	W	T	F
1	2	3	4	5
8	9	10	11	12
15	16	17	18	19
22	23	24	25	26
29	30			

### May 2024

M	T	W	T	F
		1	2	3
6	7	8	9	10
13	14	15	16	17
20	21	22	23	24
27	28	29	30	31

### June 2024

M	T	W	T	F
3	4	5	6	7
10	11	12	13	14
17	18	19	20	21
24	25	26	27	28

### July 2024

M	T	W	T	F
1	2	3	4	5
8	9	10	11	12
15	16	17	18	19
22	23	24	25	26
29	30	31		

### August 2024

M	T	W	T	F
			1	2
5	6	7	8	9
12	13	14	15	16
19	20	21	22	23
26	27	28	29	30

### September 2024

M	T	W	T	F
2	3	4	5	6
9	10	11	12	13
16	17	18	19	20
23	24	25	26	27
30				

### October 2024

M	T	W	T	F
	1	2	3	4
7	8	9	10	11
14	15	16	17	18
21	22	23	24	25
28	29	30	31	

### November 2024

M	T	W	T	F
				1
4	5	6	7	8
11	12	13	14	15
18	19	20	21	22
25	26	27	28	29

# GRUNCH OPINION

**Some key meetings are taking place this autumn with regards to the proposed East West Railway.**

One has already taken place at Ravensden and the next is at Clapham on 24th September.

It is interesting to note these meetings are not being arranged by EWR Ltd but by BFARe.

A further development is that the latest EWR chief executive David Hughes has postponed or even cancelled a site meeting with BFARe.

This comes shortly after a successful freedom of information request with regards to EWR's construction impact assessment.

This assessment appears to focus on the situation at St John's, Bedford and specifically the work that will take place in the vicinity of Bedford Hospital.

Since the revelations and also the arrival of the new government, there has been little news regarding EWR.

EWR Ltd are certainly noticeable by their

absence and really a member of the Labour central government should be in attendance at these autumn meetings.

However, I am sure BFARe will be able to discuss people's concerns including the construction impact in our area.

To clarify, this is the construction work needed for Route E and specifically where it crosses the Great Ouse Valley Way, Paula Radcliffe Way, the old A6 close to Clapham, Butler Street, the B660, Shrubbery Lane and Colmworth Road along with the impact it will have on Clapham Park, Ravensden, Wilden and Colesden.

Work needed to construct bridges and viaducts over the major routes will cause unbelievable disruption.

For example what is the proposed diversion route into Bedford on the A6 from the north Bedfordshire villages and Rushden. What will be the quality of life for those living in Ravensden, Wilden and Colesden during and after the railway has been built?

**Graham White**

## DAVID JAMES

WWW.DAVIDJAMESKITCHENS.CO.UK



We are a local manufacturer of beautiful kitchens. We sell direct to save you money. The factory showroom has an extensive display of different styles.



**SAVINGS ON ALL KITCHENS  
& Up To 25% Off Top Brand  
Appliances**

**PULLOXHILL BEDS MK45 5EU**

**01525 722230**





# Treespecific<sup>Ltd</sup>

tree management

**A comprehensive range of tree services from a local dedicated tree surgeon with twenty years experience within the tree industry**

- + All aspects of Tree Maintenance and Tree Care
- + Tree Felling
- + Crown Reduction/Thinning
- + Sectional Dismantling
- + Hedges Reduced and Trimmed
- + Dead Wood Removed
- + Fruit Tree Pruning
- + Tree Planting
- + Fully insured and Skilled Arborist
- + Member of the Royal Forestry Society

***Contact us today for a free quote***

Telephone: **01234 828895**

Mobile: **07949 368374**

Email: **simonowen@treespecific.co.uk**

**www.treespecific.co.uk**

# FOCUS ON THE VILLAGER BUS

**The Villager Bus is run by volunteers for the North Bedfordshire communities. There are scheduled routes each week and it can be hired for outings.**

The new bus can take up to 16 passengers including space for one wheelchair user. It has a low floor for easy access and a wheelchair ramp, as well as air conditioning, WiFi and phone charging points.

The Villager Bus provides regular bus services from the North Bedfordshire villages to various destinations, including Olney, Bedford, Milton Keynes, Rushden Lakes and St Ives. Concessionary Bus Passes can be used as well as payment by card or cash. Currently the cost of a single journey to any destination is only £2.

The purchase of the new bus was made possible with the generous support of various sponsors including Bedford Borough Council, the Harpur Trust, The Gale Family Charity Trust, Felmersham and Radwell Community Trust, Wixamtree Trust, The Connolly Foundation and the Christopher H R Reeves Trust.



## ● The brand new Villager Bus.

The Villager Bus is a service for all, helping everyone to get out to town centres and local supermarkets. It has been run entirely by volunteers since 1987 with the aim of improving the lives of those in the North Beds villages.

The service supports many older people and those with mobility problems who may find it difficult to travel on their own. It's a great opportunity to socialise too! We currently deliver between 250 and 300 passenger journeys a month as well as frequent community hires.

## ● The Villager Bus (Sharnbrook) committee member Andrew Gell welcomes a passenger for a local service.





# FOCUS ON THE VILLAGER BUS

**Riseley/Thurleigh – Sainsbury's (Bedford, Clapham Road)**  
**Route VL12 - 1st & 3rd Wednesday of each month**

	Out	Return
Riseley, High St. (Gold St)	0930	1135
Bletsoe, Church	0940	1130
Milton Ernest, Opp Queens Head	0945	1125
Sainsbury's	0955	1110
Thurleigh, The Close	1010	1225
Milton Ernest, Marsh Lane	1020	1215
Sainsbury's	1040	1200

**Sharnbrook – Riseley - Melchbourne – Rushden - Waitrose/ Rushden Lakes**  
**Route VL13 - 2nd Monday of each month**

	Out	Return
Sharnbrook, Lodge Rd/Loring Rd	0855	1308
Sharnbrook, Opp Nisa Store	0858	1305
Bletsoe, Opp Church	0903 RR	1300
Thurleigh, The Close	0918 RR	1255
Riseley, High St (Gold St)	0930	1243
Riseley, Primary School	0933	1240
Swineshead, Church	0936	1237
Upper Dean	0943 RR	1230
Melchbourne	0948 RR	1225
Yelden, High Street /Spring Lane	0953	1220
Newton Bromswold Village	0957	1216
Rushden, College Street	1003 RR	1210
Rushden, Waitrose/Rushden Lakes	1012 RR	1201

Passengers are strongly advised to book their journeys, apart from the Olney and Sainsbury's runs, using our website.  
[www.sharnbrookvillagerminibus.co.uk](http://www.sharnbrookvillagerminibus.co.uk)  
 Or phone: 01234 708191

Where you see RR in the timetable, this means **Rider Request**. The bus calls for passengers on request only, ie where booked.

**Sharnbrook - Felmersham - Odell - Harrold - Lavendon - Olney Market**  
**Route VL5A - Every Thursday**

	Out	Return
Sharnbrook, The Swan	0910	1148
Sharnbrook, Lodge Rd/Loring Rd	0912	1146
Felmersham, The Sun	0915 RR	1143
Odell, Bell	0920	1138
Harrold, Green	0924	1134
Lavendon, Cross	0932	1126
Olney, Market Place	0938	1120

**Carlton - Stevington - Bromham - Turvey - Cold Brayfield - Olney Market**  
**Route VL5B - Every Thursday**

	Out	Return
Carlton, Fox	1003	1243
Stevington, West End	1008	1238
Stevington, Cross	1010	1236
Stevington, Alms Houses	1012	1234
Bromham, Grange Lane	1017	1229
Turvey, Station Road	1023	1223
Turvey, Jacks Lane	1025	1221
Turvey, Green	1026	1220
Cold Brayfield	1028	1218
Olney, Market Place	1036	1210

**Felmersham - Sharnbrook - Riseley - Kimbolton - Huntingdon - St Ives**  
**Route VL14 - 3rd Monday of each month**

	Out	Return
Felmersham, The Sun	0840 RR	1557
Sharnbrook, Lodge Rd/Loring Rd	0850	1550
Sharnbrook, Opp Nisa Store	0900	1547
Bletsoe, A6 Bus Stop	0905 RR	1542
Milton Ernest	0907 RR	1540
Thurleigh, The Close	0905 RR	1535
Riseley, High St (Gold St)	0917	1523
Riseley, Primary School	0920	1520
Swineshead, Church	0923	1517
Melchbourne Village	0929 RR	1511
Upper Dean, High Street	0933	1507
Shelton, Bus Stop	0937 RR	1503
Lower Dean, High Street	0942	1458
Tilbrook, White Horse	0945	1455
Kimbolton, Post Office	0948	1452
Stonely, Main Road	0950	1450
Gt. Staughton, Snooty Tavern	0953	1447
Dillington, Crossroads	0954	1446
Perry, Opp Wheatsheaf	0956	1444
Brampton, Thrapston Road	1007	1433
Huntingdon, Bus Station	1010	1430
St Ives, Bus Station	1025	1415

**Sharnbrook - Harrold - Turvey - Milton Keynes**  
**Route VL15 - 1st Tuesday of each month**

	Out	Return
Sharnbrook, Swan	0930	1331
Sharnbrook, Lodge & Loring Rd	0932	1329
Odell, The Bell	0936	1325
Harrold, Centre	0943	1318
Carlton, The Fox, via The Moor	0950	1311
Turvey, The Green	0958	1303
Newton Blossomville, Old Mill	1004	1257
Clifton Reynes, Robin Hood	1011 RR	1250
Milton Keynes, Shop Centre	1030	1230

**Clapham-Oakley-Stevington-Turvey-Milton Keynes**  
**Route VL6 - 4th Tuesday of each month**

	Out	Return
Clapham, Community Centre	0900	1330
Oakley, High Street	0905	1325
Oakley, Memorial	0907	1323
Pavenham, Close Road	0910	1320
Pavenham, Weavers Lane	0913	1317
Stevington, West End	0918	1312
Stevington, Cross	0920	1310
Bromham, Grange Lane	0925	1305
Turvey, Station Road	0930	1303
Turvey, The Green	0932	1300
Newton Blossomville, Old Mill	0938	1253
Clifton Reynes, Robin Hood	0945 RR	1243
Milton Keynes, Marks & Spencer	0958	1230
Milton Keynes, The Point	1000	1230

**Melchbourne-Riseley-Sharnbrook-Olney-Milton Keynes**  
**Route VL7 - 3rd Tuesday of each month**

	Out	Return
Melchbourne, Village	0850 RR	1335
Swineshead, Church	0855 RR	1330
Riseley, Primary School	0900 RR	1326
Riseley, High St (Gold St)	0903 RR	1323
Bletsoe, Church	0909 RR	1317
Sharnbrook, Swan	0916	1310
Sharnbrook, Lodge Rd/Loring Rd	0918	1308
Odell, The Bell	0921	1305
Harrold, Centre	0926	1300
Lavendon, Cross	0931	1255
Olney, Market Place	0936	1250
Milton Keynes, Marks & Spencer	0954	1230
Milton Keynes, The Point	0956	1230



## The Villager Minibus



The Villager is a friendly bus service that runs through many North Bedfordshire villages going to Milton Keynes, Olney, Rushden Lakes, St Ives and Sainsbury's in Bedford. All Concession Pass holders travel free and children travel half price.

Do support your local community bus service run and driven by volunteers.

**Thurleigh - Harrold - Lavendon - Olney - Milton Keynes**  
**Route VL4 - 2nd Tuesday of each month**

	Out	Return
Thurleigh, The Close	0900 RR	1322
Milton Ernest, Queens Head	0905 RR	1317
Radwell Village	0907 RR	1315
Felmersham, Sun	0910	1313
Carlton, Crossroads	0918	1307
Carlton, The Fox	0920	1305
Harrold, Centre	0925	1300
Lavendon, Cross	0935	1250
Olney, Market Place	0940	1245
Milton Keynes, Marks & Spencer	0958	1230
Milton Keynes, The Point	1000	1230

24 April 2023

**Sharnbrook/Odell - Harrold - Sainsbury's (Bedford, Clapham Road)**  
**Route VL11 - 2nd & 4th Wednesdays of each month**

	Out	Return
Sharnbrook, Opp Fordham Arms	0930	1230
Sharnbrook Court	0935	1225
Sharnbrook, The Swan	0937	1223
Sharnbrook, Lodge Rd/Loring Rd	0940	1220
Odell, The Bell	0943	1217
Harrold, Centre	0948	1212
Carlton, The Fox	0954	1206
Pavenham	1003	1157
Clapham	1015	1145
Sainsbury's	1020	1140

Our bus is available for community private hire. Our website has more information:

[www.sharnbrookvillagerminibus.co.uk](http://www.sharnbrookvillagerminibus.co.uk)

or e-mail: [villagerbus.sharnbrook@gmail.com](mailto:villagerbus.sharnbrook@gmail.com)

If you are interested in becoming one of our volunteer drivers do phone us for an informal chat without any obligation on 01234 708191.



# HARROLD END OF SUMMER PARTY



The End of Summer Party is beginning to be something of a tradition at Harrold Cricket Club.

During the afternoon, there was a family atmosphere while in the evening revellers were entertained by some excellent music.

Plenty of effort was put into organising this event with a highlight being some quality food and drink outlets including the Harrold Calvados Society's Cider Bar.

A brilliant social occasion.

**SATURDAY 14th SEPTEMBER**

# MILTON ERNEST GARDEN CENTRE DOG SHOW AND FAMILY FUN DAY



Despite the warm weather, plenty of dogs turned up for the Milton Ernest Garden Centre Dog Show and Family Fun Day.

In addition to the show ring events which saw the dogs compete in the traditional popular classes, there were a variety of stalls catering for our canine friends.

The Dog Show was sponsored by Canine Partners.

Other highlights on the day was the face painting, children's game and Joey's ice cream.

**SUNDAY 8th SEPTEMBER**

# BEDFORD CHRISTMAS TREE FESTIVAL

Bookings are now open to decorate a tree at this year's Bedford Christmas Tree Festival on 4<sup>th</sup> to 8<sup>th</sup> December at St Paul's Church, Bedford. To book a tree email Jane Knight at [jane@80kltd.co.uk](mailto:jane@80kltd.co.uk) for an application form.

Trees are allocated on a 'first paid first allocated' basis and last year all trees were allocated by early October so do not delay.

The Festival has become a firm favourite in Bedford's Christmas Calendar and this year's theme for the decorations is 'The Magic of Christmas'.

The decoration of the 65 trees and the participation of school and community choirs plus performers who entertain the public throughout the Festival create a magical atmosphere.

Last year over 7000 people visited or took part in the Festival and just over £24,000 was raised for Bedford Hospital and St Paul's Church, which was incredible. Why not take



part or come and support this very special charity event.

Keep up to date with the Festival at [www.facebook.com/bedfordchristmastreefestival](http://www.facebook.com/bedfordchristmastreefestival)

*Pictures: Ann Collett-White*



# RISELEY SHOW



The new organisers of the Riseley Show managed to get at least one thing right - they successfully ordered some sunshine.

It was a glorious afternoon with some fantastic attractions on the main field, including a family dog show and a Pimms tent, while the traditional fruit and vegetable exhibits were the main attractions in the village hall along with the arts and crafts.

For the first time that many could remember, there was a queue to get into the Show, which was opened by favourite local author, both adult and children, Julia Jarman.

COVERAGE ON PAGES 13-15

SATURDAY 14th SEPTEMBER

# RISELEY SHOW

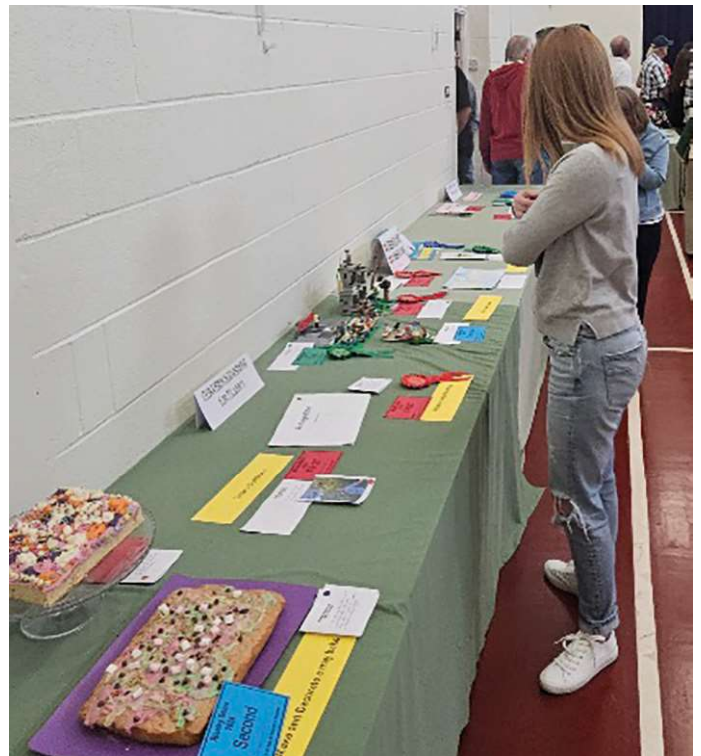


COVERAGE ON PAGES 13-15



SATURDAY 14th SEPTEMBER

# RISELEY SHOW



COVERAGE ON PAGES 13-15

SATURDAY 14th SEPTEMBER

# BOLNHURST MACMILLAN COFFEE MORNING



● The popular Bolnhurst Coffee Morning raised money for Macmillan Cancer Support on Friday 20th September. The cakes were particularly popular especially the coffee cake.

MACMILLAN  
CANCER SUPPORT

MACMILLAN  
CANCER SUPPORT

MACMILLAN  
CANCER SUPPORT

MACMILLAN  
CANCER SUPPORT

MACMILLAN  
CANCER SUPPORT



## Andrew Blair

Professional Carpet and Upholstery Cleaning

Phone or Whatsapp 07867499792

e-mail arblair64@yahoo.co.uk

website

<https://andrewblairprofessionalcarpetandupholsterycleaning.com>

# PLEASE SUPPORT OUR ADVERTISERS



# FOR YOUR DIARY

**Saturday 5th October:** North Beds Ramblers Walk - Tempsford Circular at 1.30pm. 7 Miles. Park on Church Street, Tempsford and meet at The Tempsford Memorial. Walk close to the Rivel Ivel and River Great Ouse and going via Blunham, Great Barford and Roxton. For further details go to [www.ramblers.org.uk/north-bedfordshire](http://www.ramblers.org.uk/north-bedfordshire).

**Saturday 5th October:** Coffee Shop, Stables Christian Centre, Bolnhurst. 2pm-4:30pm Homemade cakes with tea, coffee in a rural setting. On sale: plants, preserves, and craft items. Facebook: [stableschristiancentre](https://www.facebook.com/stableschristiancentre)

**Saturday 5th October:** The Old School, School Lane, Bolnhurst. 7pm Bolnhurst Curry Night. A variety of delicious curries and accompaniments, Bar open for beer and wine. Tickets £12.50. To book place [Jacqui\\_stone@hotmail.co.uk](mailto:Jacqui_stone@hotmail.co.uk) or 01234 376452.

**Sunday 6th October:** St Mary's Church, Church Road, Keysoe at 9.30am. Harvest Thanksgiving Service followed by a Harvest Lunch at Keysoe Village Hall at 12.30pm for 1pm Tickets: Adults £12 Children 10 and under: £6. Bar serving wine & soft drinks. Auction of Produce. Cash only please for bar and auction. Tickets on sale from Peggy Robins 01234 708598 or Penny Heming 01234 378878

**Friday 11th October:** Riseley Village Hall, Gold Street, Riseley. Music evening with Mario and Cymbeline. Music from the 1960s to the 2000s. Free entry

**Saturday 12th October:** Melchbourne Village Hall at 6.30pm for 7pm. Barn Dance and Harvest Supper. Music by Kelly's Eye. Tickets £15 adults and £7.50 for Under-12s. Admission includes two course supper. Tickets from Sarah Croft 07986 153423. Proceeds to Melchbourne Church.

**Tuesday 15th October:** Addison Centre, Kempston at 2.15pm. Bedford National Trust meeting. Speaker - Margaret Badley on 'The Children of Styal Mill'. Those who went on the Autumn holiday in 2022 with BNTA will remember visiting Quarry Bank Mill. Everyone welcome. Small admission fee. No need to book. Just come along. Tea and biscuits served at 2pm. For further information contact Betty Thomas on 01480 860 421.

**Saturday 19th October:** St Mary's Church, Keysoe at 1pm. Last Throes of Summer Lunch. Join us for lunch in our beautiful 12th Century church £7.50 includes lunch and dessert No need to book. Just come along. Live Organ music during lunch. Cash/cheques only please.

**Saturday 26th October:** The Old School, School Lane, Bolnhurst. 10.30am. Coffee Morning and Book Browse. Enjoy a coffee and cakes plus a chat with friends.

**Every Sunday:** Great Barford Village Hall at 10am. Great Barford Run Together. Running for fun for all standards including novices.

**Every Thursday:** Riseley Village Hall 3.30-5pm. Riseley Bus Stop Cafe for School Years 7-13 During school term.

**First Friday of the Month:** Keysoe Village Hall at 7.30pm. Bar Night

**Every Saturday:** There may be football matches at Riseley, Oakley and Thurleigh

## FOR YOUR DIARY

£1 per insertion per 30 days for a max 30 word insertion, cheque payable to Grassroots Publications, may be sent to Grassroots Publications, 2, Strawberry Hill Cottages, Knotting Green, Bedford, MK44 1AB Use this section to advertise any community or social event that may be coming up in the forthcoming months. It can include sports events. We reserve the right to omit any dates if payment is not made. If in doubt feel free to contact us on 07725 812963 or email: [dailygrunch@outlook.com](mailto:dailygrunch@outlook.com). Price includes VAT



# SARTORI WELLNESS

## Therapeutic Massage

Feeling tired, stressed, stiff aching muscles, do you work on your feet all day?

Come unwind and relax with a therapeutic massage.

Choose from a Thai Foot Massage, Indian Head Massage or Tension Relief Massage.

Fully qualified and insured. Ladies Only. Based Rushden Northamptonshire

### Contact Mary To Book

**Tel: 07464 100195**

**Email: [sartoriwellness@gmail.com](mailto:sartoriwellness@gmail.com)**

**[www.facebook.com/sartoriwellness](http://www.facebook.com/sartoriwellness)**



**SARTORI  
WELLNESS**

**PLEASE SUPPORT OUR ADVERTISERS**

# KEYSOE SCARECROW COMPETITION



● The Scarecrows Competition returned to the Village Show at Keysoe on 7th September for the first time since Covid.



Telephone 01234 709163  
or 07899 016129



Qualified

Chimney Sweep



- Riseley based professional Chimney Sweep.
- Fully qualified member of The Guild of Master Sweeps.
- Police CRB checked and £2 million liability insurance.
- Service reports that are recognised by all insurance companies.
- Specialist equipment used for Woodburning Stoves & Lined Chimneys.
- Recommended by local Stove / Fireplace installers.
- CCTV inspections and reports.

PLEASE SUPPORT OUR ADVERTISERS

Contact Tony, your local Chimney Sweep.

[www.black-horse-chimnev-sweep.co.uk](http://www.black-horse-chimnev-sweep.co.uk)

e-mail [tnav59@btinternet.com](mailto:tnav59@btinternet.com)

# FELMERSHAM & RADWELL SHOW

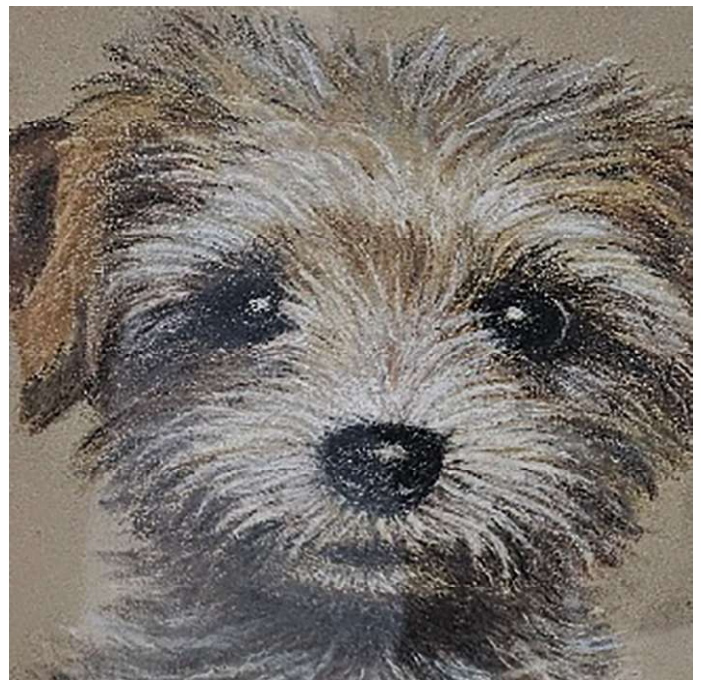
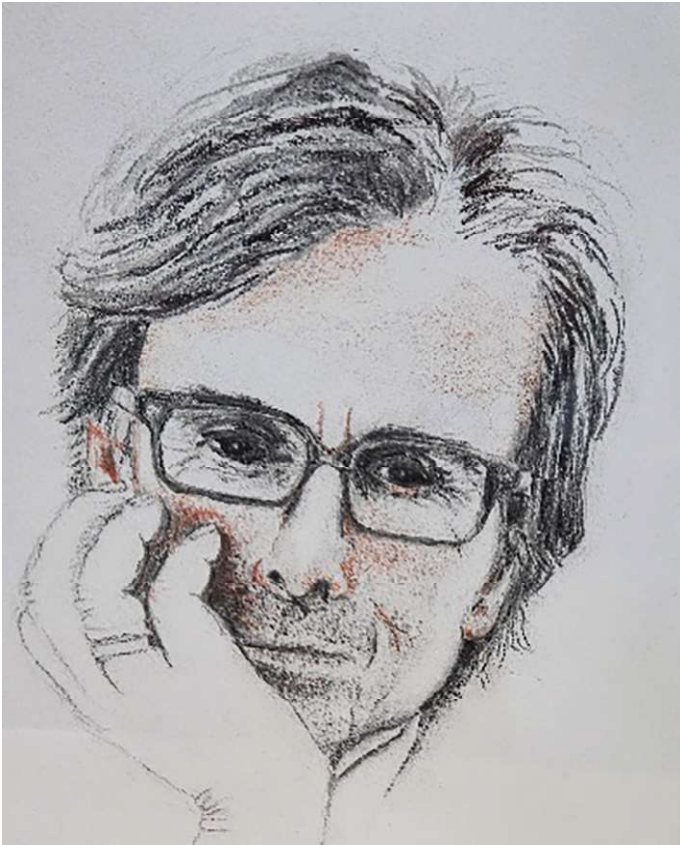


Organisers of the Felmersham Show admitted entries for the produce section was lower than in previous years because of the cool and wet summer. However, there were some impressive exhibits especially the apples, pictured above.

COVERAGE ON PAGES 20-21

SUNDAY 15th SEPTEMBER

# FELMERSHAM & RADWELL SHOW



The Felmersham & Radwell Art Group showed off their work at the Show including the amazing portrait of ITV correspondent Robert Peston, top left. There was also a fine tapestry piece of Bedford School, left, by Maria Rutgers.

COVERAGE ON PAGES 20-21

SUNDAY 15th SEPTEMBER

# FELMERSHAM SCARECROWS



The Scarecrows returned to Felmersham and Radwell during the weekend of the annual Show. Again there were some amazing displays.

## SUNDAY 15th SEPTEMBER

# GRUNCH NEWS

□ The annual Vintage Annual Road Run from Newholme Farm, Keysoe on Saturday 28th September has been cancelled due to unforeseen circumstances. The organisers - Bolnhurst Vintage Country Fayre - have apologised for the inconvenience. They added a new date may be arranged in 2025. It is expected there will be an update shortly.

□ A Barn Dance and Harvest Supper will take place at Melchbourne Village Hall on Saturday 12th October at 6.30pm for 7pm. Tickets to include supper are £15 from Sarah Croft on 07986 153423.

□ All Saints Church, Renhold hold a Pop Up Coffee Shop on the second Saturday of each month from 10am to noon. The next one is scheduled for 12th October.

□ The Sharnbrook Mill Theatre's production of 'The Girl on the Train' on 24th-28th September is set to be a sell-out. Only a few seats are available. For further details see [www.sharnbrookmilltheatre.co.uk](http://www.sharnbrookmilltheatre.co.uk)



● Kelly's Eye will be providing the music at the Melchbourne Barn Dance and Harvest Supper on 12th October.

LET US KNOW ABOUT YOUR EVENT  
Email: [dailygrunch@outlook.com](mailto:dailygrunch@outlook.com)

# BRIDGET'S COCKTAIL COLUMN



## TEQUILA MARIA

### *Ingredients and Method*

*In a Shaker over Ice.*

*¼ oz lemon juice*

*3oz tomato juice*

*1¾ oz tequila*

*Season like a Bloody Mary (black pepper, celery salt, Worcestershire Sauce, Tabasco)*

*Stir in a Highball Glass over ice.*



Thanks to Star Trek actor Casey Biggs

# DEAN & SHELTON COUNTRY SHOW



**A big highlight of the Dean & Shelton Country Show was the arrival of the Vikings.**

**The Corby-based re-enactment group managed to attract a few new members.**

**A children's entertainer was popular among the younger audience and there was also a dog display plus the showing of fruit and vegetables along with the arts and crafts.**

**COVERAGE ON PAGES 24-25**

**SATURDAY 7th SEPTEMBER**



# DEAN & SHELTON COUNTRY SHOW



COVERAGE ON PAGES 24-25

SATURDAY 7th SEPTEMBER

# VILLAGE SHOW AT KEYSOE



**The Children's Entertainer was a popular attraction at the Village Show at Keysoe.**

**Some vintage tractors, possibly from the Bolnhurst Vintage Steam Rally, made an appearance.**

**Quality produce was centre stage in the marquee while the arts and crafts were in the Village Hall.**

**COVERAGE ON PAGES 26-27**

**SATURDAY 7th SEPTEMBER**

# VILLAGE SHOW AT KEYSOE



COVERAGE ON PAGES 26-27

SATURDAY 7th SEPTEMBER

# SHARNBROOK HORTICULTURAL SHOW



Sharnbrook Village Hall was close to capacity with many local people supporting the popular annual Horticultural Show.

As can be seen, there were plenty of fruit and vegetable exhibits, all of a high standard.

A particular highlight was the arts and crafts section. And last but not least, the bottles, possibly featuring alcoholic drink.

**COVERAGE ON PAGES 28-29**

**SATURDAY 7th SEPTEMBER**

# SHARNBROOK HORTICULTURAL SHOW



COVERAGE ON PAGES 28-29

SATURDAY 7th SEPTEMBER

# GRUNCH RECIPES OUR FAVOURITES

## Home Made Scotch Egg Poppy Cooks - The Actually Delicious Air Fryer

**4** whole eggs plus two for beaten  
**500g** sausagemeat  
**½tsp** dried mixed herbs  
**½tsp** garlic powder  
**2tbs** plain flour  
**200g** Panko breadcrumbs  
**Pinch** salt and pepper

Heat the air fryer to 130°C. Put the four whole eggs in the air fryer and cook for nine minutes, which will be enough to soft boil them. Meanwhile prepare a bowl of ice cold water.

Once the time is up, transfer the eggs to the water and leave to cool for about five minutes. Once cool, peel them and set aside.

In a bowl, mix the sausagemeat, dried herbs and garlic powder with your hands until it forms a paste-like consistency. Season with salt and pepper.

Using kitchen paper, dry the peeled eggs. Gather three bowls. Season the flour and tip that into the first bowl. Add the beaten eggs to the second and the breadcrumbs to the third.

Using one quarter of the sausagemeat mixture, mould the meat around one of the boiled eggs as evenly as possible, aiming for the same thickness all the way around.

Repeat so that all the eggs are covered in sausagemeat.

Heat the air fryer to 180°C. One by one, dip the wrapped eggs first in flour, brush off any excess. Then dip into the beaten eggs and finally in the breadcrumbs to coat fully.

Put the eggs into the air fryer basket and cook for 12 minutes, until the sausage is cooked through and the coating is golden.

## GP SERVICES GROUNDWORK AND DIGGER HIRE



**PETER HAYES  
PROPRIETOR**

- Mini Digger and Driver Hire
- Various Size machines
- Breaker/Auger Attachments
- Dumper Hire
- Foundations/Concreting/Drainage
- Site Clearance
- Tree and Root Removal
- Sewage Treatment Plants Installed
- Leach Fields Installed
- Road Construction/Drives
- Patios/Hard Landscaping
- Menage/Horse Arena Construction
- Muck Heap Removal
- Fencing

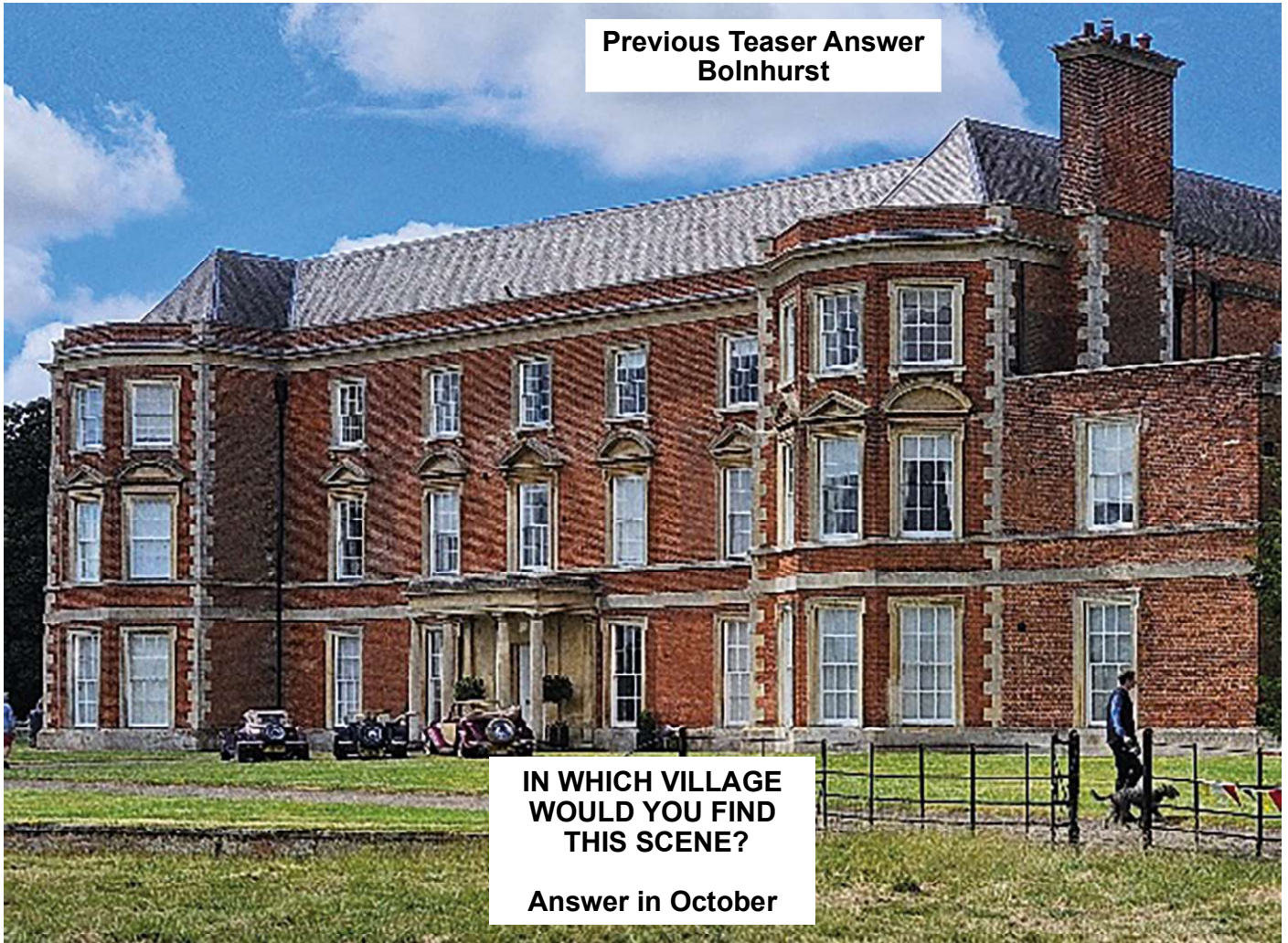
**01234 782940  
07932 002937**

**enquiries@gpservicesonline.com  
www.gpservicesonline.com**

**FULLY INSURED**

# GRUNCH TEASER

Previous Teaser Answer  
Bolnhurst



IN WHICH VILLAGE  
WOULD YOU FIND  
THIS SCENE?

Answer in October



## ABACAB DOG GROOMING

New dog grooming service in Odell. We offer a personal service aimed to meet the needs of you and your dog, catering for all breeds large or small. Our services include:-

- Clipping/trimming
- Hand stripping (Terriers and Spaniels)
- Nail trims

TELEPHONE:- 01234 720825 OR 07860 837043

## SJ TAX & ACCOUNTING SERVICES

QUALIFIED ACCOUNTANT  
FCCA ATT

Professional and friendly service  
Sole Traders, Limited Companies  
Partnerships, Business Start-ups  
Bookkeeping, Payroll, CIS  
Subcontractors  
VAT & Tax

sally@sjtax.co.uk  
01234 831997  
07899 808592



Sales, Lettings & Auctions



BRITISH  
PROPERTY  
AWARDS

2021



GOLD WINNER

ESTATE AGENT  
IN BEDFORD



Have you seen... We **won!**  
For a winning service, **talk to us.**

01234 327744 | [sales@laneandholmes.co.uk](mailto:sales@laneandholmes.co.uk) | [laneandholmes.co.uk](http://laneandholmes.co.uk)





**93A High Street, Rushden  
NN10 0NZ**

**01933 350866**

**[app.timbrownsbutchers.com](https://app.timbrownsbutchers.com)**

**[enquiries@tebrownbutchers.co.uk](mailto:enquiries@tebrownbutchers.co.uk)**

**Beef, Lamb, Pork, Chickens, Sausages, Bacon  
and so much more**

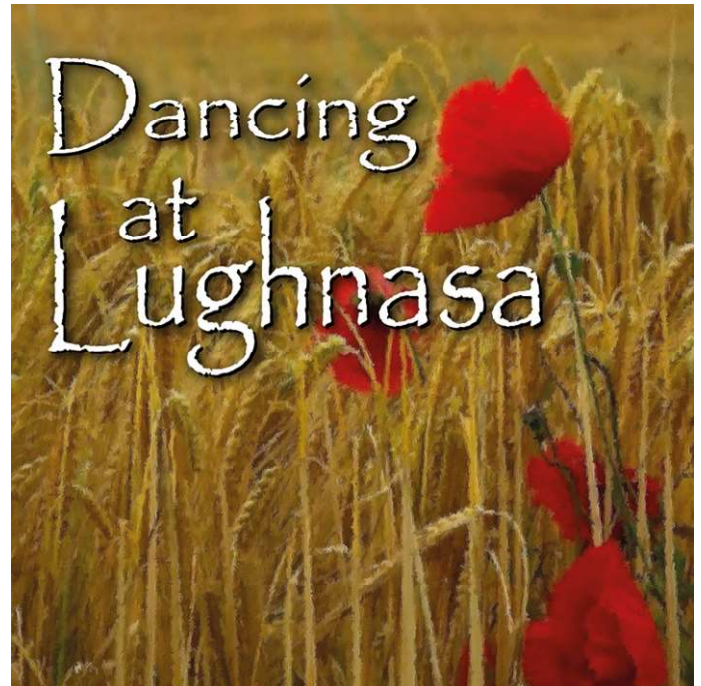


# GRUNCH THEATRE

*Dancing at Lughnasa*  
Produced by Swan Theatre Company  
The Place, Bedford  
24th-28th September  
7.30pm  
Tickets: £14 Concessions: £10-£12

Michael looks back on the late summer of 1936, when he was seven years old and living with his unmarried mother, Chris, and her four older sisters in the village of Bally Beg in Donegal.

Michael's Uncle Jack had just returned home after twenty-five years as a missionary in Africa, and they are also visited by Gerry Evans, Michael's father who promises to marry Chris and buy Michael a new bike. It's the festival of Lughnasa and there's magic in the air as Michael watches his mother and her sisters dance crazily to music on the radio.



**FOR FURTHER DETAILS CONTACT THE PLACE BEDFORD**  
[www.theplacebedford.org.uk](http://www.theplacebedford.org.uk) or phone 01234 354321

# GRUNCH THEATRE

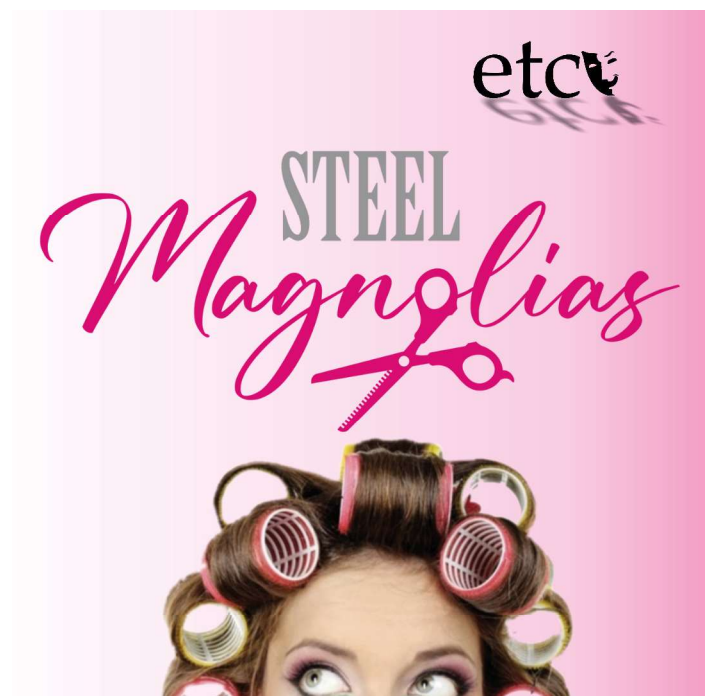
*Steel Magnolias*  
Etcetera Theatre Company  
The Place, Bedford  
3rd October  
7.30pm  
Tickets: £15 Concessions: £12.50

Is it best to live 30 minutes of wonderful or a lifetime of nothing special?

This warm, witty play explores the impact we make on those around us and along with some heart-ache delivers many laugh out loud moments.

Based on the film which starred Dolly Parton and Julia Roberts, *Steel Magnolias* is a bittersweet comedy about six distinct but connected women who meet regularly at a hair and beauty salon in Chinquapin, Louisiana.

There are many hurdles for all the women to face but they find comfort in one another.



**FOR FURTHER DETAILS CONTACT THE PLACE BEDFORD**  
[www.theplacebedford.org.uk](http://www.theplacebedford.org.uk) or phone 01234 354321

# GRUNCH THEATRE

*Flamenco Express*  
Produced by Flamenco Express  
The Place, Bedford  
4th October  
8pm  
Tickets: £18 Concessions: £15

Flamenco is as universal, powerful and versatile as the blues, as epic as opera, and as delicate and pin-sharp as ballet.

For over 30 years, Flamenco Express has existed to do justice to this unique art form by choosing the best artists and allowing them total freedom of expression.

The result is a new emotional and artistic experience delivered by an astonishing range of talent.

The show is expected to showcase the talents of Victor Fernandez and El Pola.



LET US KNOW ABOUT YOUR EVENT  
Email: [dailygrunch@outlook.com](mailto:dailygrunch@outlook.com)

FOR FURTHER DETAILS CONTACT THE PLACE BEDFORD  
[www.theplacebedford.org.uk](http://www.theplacebedford.org.uk) or phone 01234 354321

# GRUNCH THEATRE

*Playbill - The Browning Version/Harlequinade*  
Produced by Bedford Drama Company  
The Place, Bedford  
15th-19th October  
7.30pm  
Tickets: £14 Concessions: £10-£12

**The Browning Version:** A middle aged Classics teacher, who had been full of promise in his youth, finds himself with a mediocre career and a failing marriage. His inability to express his true emotions causes friction in all areas of his life. However, the actions of a young pupil result in an unexpected change in perspective.

**Harlequinade:** Set in the now lost world of the actor-manager of the mid 20th century, Harlequinade is a witty farce with elements of satire and pathos. Leading man Arthur's world



is turned upside down one evening as he is just about to go on stage to play Romeo, when his hitherto unknown daughter appears. And the child she has with her? Is that just more good news?

FOR FURTHER DETAILS CONTACT THE PLACE BEDFORD  
[www.theplacebedford.org.uk](http://www.theplacebedford.org.uk) or phone 01234 354321

# DAILY GRUNCH BIG MATCH

*AFC OAKLEY*

3

*CALDECOTE*

0



AFC Oakley continued their fine start to the season in the Bedfordshire County League Premier Division, picking up a 3-0 home victory against a strong Caldecote outfit.

Although Caldecote looked a competitive side, the hosts took control of the game with goals from Fabiano Cammarano, Zach Ives and Omojiseoluwa Bankole. After the win AFC Oakley stay on top of the league on goal difference from Cranfield United Reserves.

# GRUNCH FOOTBALL

## BEDFORDSHIRE COUNTY LEAGUE -

**Review:** Newly promoted Cranfield United Reserves had the edge in the **Premier Division** top-of-the-table clash against AFC Oakley on **21st September**.

Both sides had made impressive starts to the season and were leading the way in the table. However, visiting Cranfield United Reserves battled to a 4-2 victory with goals from Joe Bescoby, Sean Byrne, Tim Young and Jamie Snapes.

Riseley Sports continued their mixed start to the season when they went down 2-1 at Marston Shelton Rovers. Luke Clifford and Dale Malciw grabbed the goals for Rovers while James Cooke replied for the visiting Sports.

Renhold's struggling start to the campaign continued in **Division One** when they crashed 4-2 at home to Wootton Blue Cross Reserves.

The only highlights for the hosts were the

two goals from Emilio Esposito and Adelana Gbolaji.

Thurleigh celebrated their first home game of the campaign in **Division Two North** with a 3-0 victory over Bedford Albion Development with goals from Edward Hatfield-Shaw, Nathan O'Halloran and Bradley Duffett.

M&DH Clapham Sports suffered a disappointing 4-0 defeat at Blunham.

In **Division Four**, Luca James scored twice as Turvey defeated Dunstable Town Cricket Club 5-2 with Reece Beddall, Sam Jessop and William Westwood also netting.

## FIXTURES - 28th September

**Bedfordshire County League Premier Division:** Crawley Green Development v AFC Oakley; Flitwick Town v Riseley Sports. **Division One:** AFC Oakley Development v Renhold. **Division Two North:** Thurleigh v Green End Rovers; M&DH Clapham Sports v FC Haynes. **Division Four:** Dunstable Town Cricket Club v M&DH Clapham Sports Reserves; Turvey v AFC Clophill.

THE CHARTERED SOCIETY OF PHYSIOTHERAPY · PHYSIO FIRST · THE MCKENZIE INSTITUTE (UK) · HPC REGISTERED

[www.ousevalleyphysio.co.uk](http://www.ousevalleyphysio.co.uk)

# Claudia von Caron

## PHYSIOTHERAPIST

- Back pain & sciatica
- Neck & shoulder pain
- Whiplash & headaches
- Sports injuries
- Work related disorders
- Repetitive strain
- Injuries to joints & soft tissues
- MS & stroke

Mrs Claudia von Caron MCSP, Chartered Physiotherapist

**Ouse Valley Physiotherapy Practice**  
3 The Drive, Sharnbrook, Bedford MK44 1HU  
[claudia@ousevalleyphysio.co.uk](mailto:claudia@ousevalleyphysio.co.uk)

Call 01234 781777



BODY



HARMONY



# CRICKET FOCUS ON THE POLDEN CUP



**RENHOLD ALL STARS**



**WILDEN**

# CRICKET FOCUS ON THE POLDEN CUP



**COVERAGE ON PAGES 34-36**

**Wilden retained the Polden Cup after defeating Renhold All Stars by a few runs.**

**The Polhill Arms based side knew it was going to be tough against a League side even though they are currently holding up the Bedfordshire Invitation League Division One.**

**Not sure who won the toss but it was Wilden who batted first.**

**The umpires, notably organiser of the event Andy Webber, added some new rules including the one where a batter would be given out if he was playing in a boring fashion.**

**Sponsors for the day included Bedfordshire Auto Locks, Josh O'Neill Agricultural and Mechanical Services and caterers Appy Days.**

**On these pages, Wilden are pictured batting and Renhold All Stars fielding.**

# CRICKET FOCUS ON THE POLDEN CUP



**COVERAGE ON PAGES 34-36**



# GRUNCH CRICKET

**NORTHAMPTONSHIRE LEAGUE:** It was a day of firsts for Thurleigh in their **Division Five** match at Burton Latimer on **21st September**.

Firstly, acting captain Chris Wood admitted he had never come off before for thunder and lightning.

Thurleigh secretary Clive Franklin then stated he had never come face-to-face with the Duckworth Lewis formula to determine the result of disrupted matches.

Then after all the drama, it was confirmed that Thurleigh had won their first Northamptonshire League title.

The first part of the dramatics had started the previous week when Thurleigh defeated Kettering Town II at home to secure promotion to **Division Four**. However, the Yellow Caps were determined to go up as champions and knew they had to win to be certain.

A Thurleigh setback would have given the

other promoted side New Bradwell, who were at lowly Raunds, the chance to claim the title.

After the results on the previous Saturday, third placed Burton Latimer II had nothing to play for but their pride meant Thurleigh were going to have a tough game especially after the hosts made a solid start and were in a reasonable position when play was suspended for thunder and lightning.

The Duckworth Lewis Theory, now known as Duckworth Lewis Stern Theory, came into play when a second interruption occurred for torrential rain. As background, Frank Duckworth and Tony Lewis retired in 2014 but their work has been carried on by Professor Stern - not to be confused with Thurleigh all-rounder Professor Stean.

As a result of the stoppages, Burton Latimer's innings was reduced from 45 overs to 43 and they made 187-9. Due to fading light, Thurleigh's innings was reduced to a minimum of 20 overs and a revised target of 116. Thurleigh won by nine wickets to be champions.

## ST. MARY'S CHURCH, KEYSOE

### HARVEST THANKSGIVING SERVICE

at 9.30am for 10am  
on Sunday 6th October  
followed by a  
HARVEST LUNCH  
in Keysoe Village Hall  
at 12.30 for 1.00pm

**Tickets: Adults £12.00 Children 10 and under: £6.00**  
**Bar serving wine & soft drinks**  
**Auction of Produce**  
**Cash only please for bar and auction**

**Tickets on sale from Peggy Robins**  
**708598 or**  
**Penny Heming 378878**

## ST. MARY'S CHURCH, KEYSOE

### LAST THROES OF SUMMER LUNCH

*Join us for lunch in our beautiful 12th Century church*  
*on*  
*Saturday, 19th October*  
*at 1pm*

*£7.50 pp includes lunch and dessert*

*NO NEED TO BOOK, JUST COME ALONG*

*Live Organ music during lunch*  
*Cash/cheques only please*

# THURLEIGH CRICKET CLUB ARE NORTHANTS LEAGUE DIVISION FIVE CHAMPIONS



● The end of a long, tense day. Acting captain Chris Wood, left, and all-rounder Rob Pryor secured a nine-wicket victory over Burton Latimer II in gloomy light to ensure Thurleigh won the Northamptonshire Cricket League Division Five on 21st September.

**COMING SOON: SPECIAL SOUVENIR SUPPLEMENT**



professional dog grooming

**Fully Qualified and Insured Dog  
Groomer. I work one on one with your  
dog, with a range of services.**

**63 High Street, Wilden,  
Bedfordshire, MK44 2QD**

**07538276993/**

**k9kutsgroomers@outlook.com**

**Facebook- k9kutsgroomers**



**Soulbrook**  
Property Services

**Extensions**



**Renovations**



**Carpentry & Joinery**



**Bathrooms**



**Kitchens**

**01234 782558**

**07731 818990**

**[www.soulbrook.co.uk](http://www.soulbrook.co.uk)**