

THE DAILY GRUNCH

SERVING VILLAGE COMMUNITIES IN NORTH BEDFORDSHIRE

*Produced by Grassroots Publications
Previously The Rural Grunch
07725 812963*

VOLUME 2 - ISSUE 259
2nd February 2025

Email: dailygrunch@outlook.com
Web: www.grassrootspublications.co.uk



**THEATRE
COVERAGE**

SEE PAGES 26-27

**SPORTS
COVERAGE**

SEE PAGES 29-31

PAGE CHANGES TO THE ONLINE DAILY GRUNCH

To assist our readers we have expanded our Key Changes section.

This allows regular readers to see what has changed at a glance in the editions that they may have missed.

SEE RATE CARD ON PAGE 3

Front Cover: *Thurleigh attack during their Bedfordshire County League Division Two North match against FC Haynes.*

Picture: Graham White

CONDITIONS OF ACCEPTANCE

Although every effort will be made to meet advertisers wishes, the publishers do not accept responsibility for inaccuracies in advertisements or in consequences arising, nor do they guarantee the insertion of any advertisement on a specified date, or in a specified section of the paper.

Furthermore, the publishers do not accept any responsibility for one or more of a series of advertisements being omitted for any cause whatsoever. They reserve the right to amend or omit or reclassify or suspend any advertisement previously ordered without giving a reason or prior notice to the advertiser. No responsibility is accepted for the loss or damage to copy, or error in the printing. It is the responsibility of the advertiser to ensure conformity with the Trade Description Act 1968, Sex Discrimination Act 1975 and Business Advertisements (Disclosure Order 1977). All advertisements are accepted in good faith. Placing an order with THE DAILY GRUNCH will signify acceptance of the above conditions.

Artwork forming part or whole of any advertisement prepared by THE DAILY GRUNCH on behalf of any advertiser may not be used in any other publication whatever without permission of the publishers.

KEY CHANGES TO THE DAILY GRUNCH FROM THE LAST ISSUE

2nd February: *Page 15, Page 28*

1st February: *Page 26*

31st January: *Page 6*

30th January: *Page 14*

29th January: *Page 27*

28th January: *Page 29*

27th January: *Page 30*

26th January: *Page 17*

25th January: *Page 29*

24th January: *Page 15*

23rd January: *Page 15, Page 28*

22nd January: *Page 1, Page 30*

AS ALWAYS WE ENCOURAGE YOU TO SEND US YOUR NEWS AND DETAILS OF ANY EVENTS YOU MAY BE HOLDING.

Email us at

dailygrunch@outlook.com

Deadline: Approx two working days before publication - for example Friday = 10am Wednesday

WELCOME TO THE DAILY GRUNCH

It was four years on 12th April since we launched the online Daily Grunch.

This replaced the traditional Rural Grunch, which we had published and printed since March 2009.

We made the decision to go online following the Covid 19 Lockdown that came into effect on 23rd March 2020.

After Covid 19, the UK has suffered a cost-of-living crisis and it is safe to say we would not have been able to continue the magazine in its traditional form due to the increase in prices for paper and print.

As indicated in its title, we are able to update the online magazine on a daily basis and we do this 300 times a year.

This allows us to give coverage of local community events almost immediately after they have taken place rather than wait up to 31 days, which was the case with the printed monthly issue.

The same applies with advertising as we can insert material almost as soon as we

receive the copy. The online magazine is also in colour, which makes our coverage of community events more attractive.

Our goal remains the same - supporting community events and small businesses.

You will have noticed on our access page - www.grassrootspublications.co.uk - that we have produced a number of supplements.

The Summer 2023 includes a record of community events during the first part of last year while the Autumn 2023 does likewise up to Christmas.

We are aiming to produce similar publications for 2024.

We have also set up a Business and Community Directory. Please contact us at dailygrunch@outlook.com for further information including rates for the Directory.

See below for The Daily Grunch Rate Card.

Graham White

RATE CARD ADVERTISING PRICES

FROM 8th APRIL 2024

Full Page: 30p per issue

1/2 Page: 18p per issue

1/4 Page: 12p per issue

Community Rates: 50% Discount

Invoicing every 100 issues. 300 issues per annum.

All Prices ex-VAT

For further information and to place advertising: dailygrunch@outlook.com

AS ALWAYS WE ENCOURAGE YOU TO SEND US YOUR NEWS AND DETAILS OF ANY EVENTS YOU MAY BE HOLDING.

Email us at

grassrootspublications@btconnect.com
ruralgrunch@btconnect.com

Deadline: Approx two working days before publication - for example Friday = 10am Wednesday

TAKE A SHORT CUT BY SUE

Many people are now reading The Daily Grunch but for some it is a new experience.

For a few, it may be too many clicks or you cannot remember the name of the website.

There is a little trick:

Go to the www.grassrootspublications.co.uk Home Page where the link to The Daily Grunch is located. In the top right hand corner of this page you will see 'three vertical dots'. Click on these and you will see a list of options.

Choose 'Add to Home Screen' and you should have an icon for Grassroots Publications in the favourites area or something similar on your device. Then any time you want to access The Daily Grunch you only have to click on this icon to take you to the link.

If you want to find a specific article in The Daily Grunch try this



Ctrl + F to find the subject/word you are looking for. This avoids trying to find the elusive article.

For example: Open The Daily Grunch – Press **Ctrl + F** which will open a small box, Type in the box the topic/number you are looking for. Say for example - 'Riseley'.

You will find 16 entries in the 27th October.2020 edition.

Sue
www.renholdvillage.co.uk

NEW YEAR'S RESOLUTION

Why not try a walk with North Beds Ramblers?

We are a friendly group who walk on Saturdays:
Every Saturday afternoon, approx. 6 miles

Saturday mornings, twice monthly, 10 -12 miles
Just turn up wearing suitable footwear and clothing
Sorry only assistance dogs allowed

We walk in all weathers,
you may get wet and muddy!!

Bring refreshments
(and plenty of water in the summer)

Interested?
Find our programme on the Ramblers website: <https://www.ramblers.org.uk/north-bedfordshire>
Facebook: <https://www.facebook.com/groups/northbedsramblers>
Twitter: @nb_ramblers

Walks are free but if you decide to walk with us regularly we would like you to join the Ramblers

The Ramblers' Association is a registered charity (1093577) and a company limited by guarantee. (No.4438932). Registered Office: 1 Clink Street, 3rd floor, London. SE1 3DQ

Collection Calendar

Please ensure that your bins are out for collection by 6am on your collection day. Missed collections must be reported within 48 hours of your scheduled collection. Visit www.bedford.gov.uk/misssedbin to report a missed collection.

Remember! Garden waste collections are suspended from 1st December to 1st March.

December 2024 and January 2025 Date Changes

Recycling only

Mon 23 Dec	moves to	Sat 21 Dec
Tues 24 Dec	moves to	Mon 23 Dec
Weds 25 Dec	moves to	Tues 24 Dec
Thurs 26 Dec	moves to	Fri 27 Dec
Fri 27 Dec	moves to	Sat 28 Dec

Rubbish only

Mon 30 Dec	No Change
Tues 31 Dec	No Change
Weds 1 Jan	moves to Thurs 2 Jan
Thurs 2 Jan	moves to Fri 3 Jan
Fri 3 Jan	moves to Sat 4 Jan

Key

- Red Outline =** Date Change
- Orange =** Recycling Only
- Purple =** Recycling and Garden
- Grey =** General Rubbish

December 2024

M	T	W	T	F
2	3	4	5	6
9	10	11	12	13
16	17	18	19	20
23	24	25	26	27
30	31			

January 2025

M	T	W	T	F
		1	2	3
6	7	8	9	10
13	14	15	16	17
20	21	22	23	24
27	28	29	30	31

February 2025

M	T	W	T	F
3	4	5	6	7
10	11	12	13	14
17	18	19	20	21
24	25	26	27	28

March 2025

M	T	W	T	F
3	4	5	6	7
10	11	12	13	14
17	18	19	20	21
24	25	26	27	28
31				

April 2025

M	T	W	T	F
	1	2	3	4
7	8	9	10	11
14	15	16	17	18
21	22	23	24	25
28	29	30		

May 2025

M	T	W	T	F
			1	2
5	6	7	8	9
12	13	14	15	16
19	20	21	22	23
26	27	28	29	30

June 2025

M	T	W	T	F
2	3	4	5	6
9	10	11	12	13
16	17	18	19	20
23	24	25	26	27
30				

July 2025

M	T	W	T	F
	1	2	3	4
7	8	9	10	11
14	15	16	17	18
21	22	23	24	25
28	28	30	31	

August 2025

M	T	W	T	F
				1
4	5	6	7	8
11	12	13	14	15
18	19	20	21	22
25	26	27	28	29

September 2025

M	T	W	T	F
1	2	3	4	5
8	9	10	11	12
15	16	17	18	19
22	23	24	25	26
29	30			

October 2025

M	T	W	T	F
		1	2	3
6	7	8	9	10
13	14	15	16	17
20	21	22	23	24
27	28	29	30	31

November 2025

M	T	W	T	F
3	4	5	6	7
10	11	12	13	14
17	18	19	20	21
24	25	26	27	28

GRUNCH OPINION

Our Labour government have given the East-West Railway the final green light - it will go ahead.

Bedford Borough Council have endorsed Route E that goes via Ravensden, Wilden and Colesden.

The non-statutory consultation, that ended on 24th January, was not about route preferences but how it would be built.

The decision to have the extra two tracks was made long ago and EWR Ltd are not going to change their mind.

Bedford & Kempston MP Mohammad Yasin has failed to explain why the extra tracks are not required.

Mr Yasin has not shown how East Midlands and East West Railways can work together along with freight trains.

There has been no timetabling evidence put forward by Mr Yasin to show how the increase in trains, including the Norwich to Bristol service and the Cambridge to Stewartby stopper, can use the existing four tracks.

North Bedfordshire MP Richard Fuller has been relatively quiet since the election back in July.

Although he has expressed concern about the route through Clapham Park, he has hardly mentioned the impact on Ravensden and Wilden, especially as the route goes close to the inhabited areas of these villages with noise pollution a particular concern.

The past has happened - the railway is going to go ahead whether we like it or not. It is time to end the statements that the railway should be scrapped.

It is now important for the campaigning groups to focus on what the East-West railway will bring.

In the long term, the concern centres on increased housing with the prospect of a new town at Tempsford plus a rumoured one to the north of Bedford. Then there is the threat of solar farms in the rural areas.

North Bedfordshire must continue to fight.

Graham White

DAVID JAMES

WWW.DAVIDJAMESKITCHENS.CO.UK



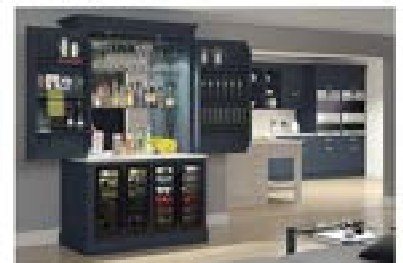
We are a local manufacturer of beautiful kitchens. We sell direct to save you money. The factory showroom has an extensive display of different styles.



**SAVINGS ON ALL KITCHENS
& Up To 25% Off Top Brand
Appliances**

PULLOXHILL BEDS MK45 5EU

01525 722230





Treespecific^{Ltd}

tree management

A comprehensive range of tree services from a local dedicated tree surgeon with twenty years experience within the tree industry

- + All aspects of Tree Maintenance and Tree Care
- + Tree Felling
- + Crown Reduction/Thinning
- + Sectional Dismantling
- + Hedges Reduced and Trimmed
- + Dead Wood Removed
- + Fruit Tree Pruning
- + Tree Planting
- + Fully insured and Skilled Arborist
- + Member of the Royal Forestry Society

Contact us today for a free quote

Telephone: **01234 828895**

Mobile: **07949 368374**

Email: **simonowen@treespecific.co.uk**

www.treespecific.co.uk

FOCUS ON THE VILLAGER BUS

The Villager Bus is run by volunteers for the North Bedfordshire communities. There are scheduled routes each week and it can be hired for outings.

The new bus can take up to 16 passengers including space for one wheelchair user. It has a low floor for easy access and a wheelchair ramp, as well as air conditioning, WiFi and phone charging points.

The Villager Bus provides regular bus services from the North Bedfordshire villages to various destinations, including Olney, Bedford, Milton Keynes, Rushden Lakes and St Ives. Concessionary Bus Passes can be used as well as payment by card or cash. Currently the cost of a single journey to any destination is only £2.

The purchase of the new bus was made possible with the generous support of various sponsors including Bedford Borough Council, the Harpur Trust, The Gale Family Charity Trust, Felmersham and Radwell Community Trust, Wixamtree Trust, The Connolly Foundation and the Christopher H R Reeves Trust.



● The brand new Villager Bus.

The Villager Bus is a service for all, helping everyone to get out to town centres and local supermarkets. It has been run entirely by volunteers since 1987 with the aim of improving the lives of those in the North Beds villages.

The service supports many older people and those with mobility problems who may find it difficult to travel on their own. It's a great opportunity to socialise too! We currently deliver between 250 and 300 passenger journeys a month as well as frequent community hires.

● The Villager Bus (Sharnbrook) committee member Andrew Gell welcomes a passenger for a local service.



FOCUS ON THE VILLAGER BUS

Riseley/Thurleigh – Sainsbury's (Bedford, Clapham Road)

Route VL12 - 1st & 3rd Wednesday of each month

	Out	Return
Riseley, High St. (Gold St)	0930	1135
Bletsoe, Church	0940	1140
Milton Ernest, Opp Queens Head	0945	1135
Sainsbury's	0955	1110
Thurleigh, The Close	1010	1225
Milton Ernest, Marsh Lane	1020	1215
Sainsbury's	1040	1200

Sharnbrook – Riseley - Melkbourne – Rushden - Waitrose/ Rushden Lakes

Route VL13 - 2nd Monday of each month

	Out	Return
Sharnbrook, Lodge Rd/Loring Rd	0850	1308
Sharnbrook, Opp Nisa Store	0858	1305
Bletsoe, Opp Church	0903 RR	1300
Thurleigh, The Close	0918 RR	1255
Riseley, High St (Gold St)	0930	1243
Riseley, Primary School	0933	1240
Swineshead, Church	0936	1237
Upper Dean	0943 RR	1230
Melkbourne	0948 RR	1225
Yelden, High Street /Spring Lane	0953	1220
Newton Bromswold Village	0957	1216
Rushden, College Street	1003 RR	1210
Rushden, Waitrose/Rushden Lakes	1012 RR	1201

Passengers are strongly advised to book their journeys, apart from the Olney and Sainsbury's runs, using our website:
www.sharnbrookvillagerminibus.co.uk
 Or phone: 01234 708191

Where you see **RR** in the timetable, this means **Rider Request**. The bus calls for passengers on request only, ie where booked.

Sharnbrook - Felmersham - Odell - Harrold - Lavendon - Olney Market

Route VL5A - Every Thursday

	Out	Return
Sharnbrook, The Swan	0910	1148
Sharnbrook, Lodge Rd/Loring Rd	0912	1146
Felmersham, The Sun	0915 RR	1143
Odell, Bell	0920	1138
Harrold, Green	0924	1134
Lavendon, Cross	0932	1126
Olney, Market Place	0938	1120

Carlton - Stevington - Bromham - Turvey - Cold Brayfield - Olney Market

Route VL5B - Every Thursday

	Out	Return
Carlton, Fox	1003	1243
Stevington, West End	1008	1238
Stevington, Cross	1010	1236
Stevington, Aims Houses	1012	1234
Bromham, Grange Lane	1017	1229
Turvey, Station Road	1023	1223
Turvey, Jacks Lane	1025	1221
Turvey, Green	1026	1220
Cold Brayfield	1028	1218
Olney, Market Place	1036	1210

Felmersham - Sharnbrook - Riseley - Kimbolton - Huntingdon - St Ives

Route VL14 - 2nd Monday of each month

	Out	Return
Felmersham, The Sun	0840 RR	1557
Sharnbrook, Lodge Rd/Loring Rd	0850	1550
Sharnbrook, Opp Nisa Store	0900	1547
Bletsoe, A6 Bus Stop	0905 RR	1542
Milton Ernest	0907 RR	1540
Thurleigh, The Close	0905 RR	1535
Riseley, High St (Gold St)	0917	1523
Riseley, Primary School	0920	1520
Swineshead, Church	0923	1517
Melkbourne Village	0929 RR	1511
Upper Dean, High Street	0933	1507
Shelton, Bus Stop	0937 RR	1503
Lower Dean, High Street	0942	1458
Tilbrook, White Horse	0945	1455
Kimbolton, Post Office	0948	1452
Stoney, Main Road	0950	1450
Gr. Staughton, Snooty Tavern	0953	1447
Dillington, Crossroads	0954	1446
Perry, Opp Wheatsheaf	0956	1444
Brampton, Thrapston Road	1007	1433
Huntingdon, Bus Station	1010	1430
St Ives, Bus Station	1025	1415

Sharnbrook - Harrold - Turvey - Milton Keynes

Route VL15 - 1st Tuesday of each month

	Out	Return
Sharnbrook, Swan	0930	1331
Sharnbrook, Lodge & Loring Rd	0932	1329
Odell, The Bell	0936	1325
Harrold, Centre	0943	1318
Carlton, The Fox, via The Moor	0950	1311
Turvey, The Green	0958	1303
Newton Blossomville, Old Mill	1004	1257
Clifton Keynes, Robin Hood	1011 RR	1250
Milton Keynes, Shop Centre	1030	1230

Clapham - Oakley - Stevington - Turvey - Milton Keynes

Route VL6 - 4th Tuesday of each month

	Out	Return
Clapham, Community Centre	0900	1330
Oakley, High Street	0905	1325
Oakley, Memorial	0907	1323
Pavenham, Close Road	0910	1320
Pavenham, Weavers Lane	0913	1317
Stevington, West End	0918	1312
Stevington, Cross	0920	1310
Bromham, Grange Lane	0925	1305
Turvey, Station Road	0930	1303
Turvey, The Green	0932	1300
Newton Blossomville, Old Mill	0938	1253
Clifton Keynes, Robin Hood	0945 RR	1243
Milton Keynes, Marks & Spencer	0958	1230
Milton Keynes, The Point	1000	1230

Melkbourne - Riseley - Sharnbrook - Olney - Milton Keynes

Route VL7 - 3rd Tuesday of each month

	Out	Return
Melkbourne, Village	0850 RR	1335
Swineshead, Church	0855 RR	1330
Riseley, Primary School	0900 RR	1326
Riseley, High St (Gold St)	0903 RR	1323
Bletsoe, Church	0909 RR	1317
Sharnbrook, Swan	0916	1310
Sharnbrook, Lodge Rd/Loring Rd	0918	1308
Odell, The Bell	0921	1305
Harrold, Centre	0926	1300
Lavendon, Cross	0931	1255
Olney, Market Place	0936	1250
Milton Keynes, Marks & Spencer	0954	1230
Milton Keynes, The Point	0956	1230

The Villager Minibus



The Villager is a friendly bus service that runs through many North Bedfordshire villages going to Milton Keynes, Olney, Rushden Lakes, St Ives and Sainsbury's in Bedford. All Concession Pass holders travel free and children travel half price.

Do support your local community bus service run and driven by volunteers.

Thurleigh - Harrold - Lavendon - Olney - Milton Keynes

Route VL4 - 2nd Tuesday of each month

	Out	Return
Thurleigh, The Close	0900 RR	1312
Milton Ernest, Queens Head	0905 RR	1317
Radwell Village	0907 RR	1315
Felmersham, Sun	0910	1313
Carlton, Crossroads	0918	1307
Carlton, The Fox	0920	1305
Harrold, Centre	0925	1300
Lavendon, Cross	0935	1250
Olney, Market Place	0940	1245
Milton Keynes, Marks & Spencer	0958	1230
Milton Keynes, The Point	1000	1230

24 April 2023

Sharnbrook/Odell - Harrold - Sainsbury's (Bedford, Clapham Road)

Route VL11 - 2nd & 4th Wednesdays of each month

	Out	Return
Sharnbrook, Opp Fordham Arms	0930	1150
Sharnbrook Court	0935	1125
Sharnbrook, The Swan	0937	1123
Sharnbrook, Lodge Rd/Loring Rd	0940	1120
Odell, The Bell	0943	1117
Harrold, Centre	0948	1112
Carlton, The Fox	0954	1106
Pavenham	1003	1157
Clapham	1015	1145
Sainsbury's	1020	1140

Our bus is available for community/private hire. Our website has more information:

www.sharnbrookvillagerminibus.co.uk

or e-mail:
villagerbus.sharnbrook@gmail.com

If you are interested in becoming one of our volunteer drivers do phone us for an informal chat without any obligation on 01234 708191.





professional dog grooming

**Fully Qualified and Insured Dog
Groomer. I work one on one with your
dog, with a range of services.**

**63 High Street, Wilden,
Bedfordshire, MK44 2QD**

07538276993/

k9kutsgroomers@outlook.com

Facebook- k9kutsgroomers

BOLNHURST COFFEE MORNING AND BOOK BROWSE



● The first Bolnhurst Coffee Morning and Book Browse of the year was held on Saturday 11th January at the Old School. The highlight was a controlled fire in the grate, which was a welcome respite to the freezing conditions outside.



Andrew Blair

Professional Carpet and Upholstery Cleaning

Phone or Whatsapp 07867499792

e-mail arblair64@yahoo.co.uk

website

<https://andrewblairprofessionalcarpetandupholsterycleaning.com>

PLEASE SUPPORT OUR ADVERTISERS

GRUNCH NEWS



● The Tibbs Dementia Foundation hold their Tibbs Cafe on the third Friday every month at Renhold Chapel in Woodfield Lane. There was a good turnout at the January event.

Picture: Renhold Village Facebook

*FREE
ENTRY*

GREAT STAUGHTON FOOD AND CRAFT MARKET 11.30am-2.30pm GREAT STAUGHTON VILLAGE HALL

*FREE
ENTRY*

2025 DATES

17th JANUARY - 15th FEBRUARY - 15th MARCH

19th APRIL - 17th MAY - 21st JUNE

19th JULY - 16th AUGUST - 20th SEPTEMBER

18th OCTOBER - 15th NOVEMBER - 20th DECEMBER



Jan—Feb 2025

@ Bohnhurst Old School

Coffee & Book Browse Mornings

11th January

8th February

both @ 10.30am

Souper Fridays

24th January

28th February

@12 noon

Defib & CPR session

25th Jan 2025

any enquiries

Jacqui 376452 em jacqui_stone@hotmail.co.uk

Wendy 376754 em wendylevy2811@gmail.com

Judith 376467 em judithanorfolk@gmail.com

GRUNCH NEWS

□ Milton Ernest Garden Centre are holding a Half Term Kids Club on Thursday 20th February from 10am to 12 noon.

The session will include making a Cartoon Tomato Pot, Soing Tomato Seeds, making a Felt Daffodil and decorating a Vegetable Theme Cup cake.

Th cost is £6 per child and they must be accompanied by an adult at all times. Spaces limited to 15. **To book email:** chrisfothergill@miltonernestgardencentre.co.uk or phone 01234 823033.

□ The Keysoe Big Breakfast takes place on Saturday 15th February at Keysoe Village Hall between 9am and 11am, A full English costs £7.50 and a smaller version £4.50.

THE HIGGINS BEDFORD



THE HIGGINS BEDFORD

Edward Bawden & Me Exhibition Tours
Friday 17th January
12 - 1pm
£6.85, concessions £5.50 – Book Online
(Search Higgins Bedford)

Join the Keeper of Fine and Decorative Art for an hour long tour of some of the highlights of Edward Bawden & Me.

Use the promotional code HIGGINS30 to remove any transaction fee. For concessionary rate please call the Box Office on 01234 718044.



Live Longer Better - Bedford is a programme of exercise and physical activity sessions aimed at 60-year-olds and over.

Please come along and join us at any of our sessions, no need to book, just turn up and pay cash on the day (except the bowling and the swimming which is card payment only).

Moving forward, If you would like to see an activity included in our program or to find out more information, please email sport@bedford.gov.uk. While we will consider all suggestions, we cannot guarantee to include them all.

Live an active live and stay healthy longer!

There are various sessions at the Harpur Suite on Mondays and Wednesdays, Tuesdays at John Bunyan Centre and Wednesdays at The Bedford International Stadium, Barkers Lane.

For further details including times and costs plus other activities email: sport@bedford.gov.uk.



You can try America's fastest growing racquet sport in Bedford - Pickleball.

To find out how email info@bedfordpickleball.co.uk

GRUNCH NEWS

☐ **CANOE TRAIL** - Learn kayaking , canoeing and stand up paddleboarding skills. Book qualification courses and/or coaching sessions with Canoe Trail at Kempston outdoor centre. Dates for this years programmes are now live on the website. **Go to: www.canoetrail.co.uk/activities/lessons-courses**

☐ **PARKINSON'S UK:** A water-based exercise group for anyone with Parkinson's looking to keep fit and live well. Held every Wednesday 1.15pm at the Kempston Pool and Fitness, Hillgrounds, Kempston. **For further information please call Rachel on 07514 365858.**

☐ **NETBALL YOUTH CAMP** takes place on Thursday 20th February between 10am-3pm at Trinity Arts and Leisure Centre, Bromham Road, Bedford for girls aged 11-14. **For further information and to book a place please email joanne.brewster@englandnetball.co.uk**

☐ **BLUES AND BEYOND:** A partnership between Bedford Blues and Beyond Limits. These are specialised physical activity sessions for young individual people aged 10-18 years from across the SEND community.

Sessions will take place during term time at John Bunyan Sports and Fitness, Mile Road, Bedford on: Tuesdays: 6.30-7.30pm
Saturdays: 10-11am. Commencing on Tuesday 28th January, these sessions are designed to foster inclusivity and promote physical well-being. **To register your interest, please email Olivia.flemons@bedford.gov.uk**



Nick Cooke will be the speaker at the next Colmworth & Neighbours History Society meeting at Colmworth Village Hall on Friday 21st February at 7.30pm.

His talk will focus on the role Bletchley Park played in the Second World War.

During World War Two, the estate housed the Government Code and Cypher School (GC&CS), which regularly penetrated the secret communications of the Axis Powers – most importantly the German Enigma and Lorenz ciphers.

According to the official historian of British Intelligence, the 'Ultra' intelligence produced at Bletchley shortened the war by two to four years, and without it the outcome of the war would have been uncertain.

The team at Bletchley Park devised automatic machinery to help with decryption, culminating in the development of Colossus, the world's first programmable digital electronic computer.



● **North Bedfordshire MP Richard Fuller held a Town Meeting at Ravensden on 30th January where he warned residents of the Labour government's housing policy following Bedford Borough Council's continuing support of East-West Rail."**

Picture: Parish of Renhold Facebook



SARTORI WELLNESS

Therapeutic Massage

Feeling tired, stressed, stiff aching muscles, do you work on your feet all day?
Come unwind and relax with a therapeutic massage.

Choose from a Thai Foot Massage, Indian Head Massage or Tension Relief Massage.
Fully qualified and insured. Ladies Only. Based Rushden Northamptonshire

Contact Mary To Book

Tel: 07464 100195

Email: sartoriwellness@gmail.com

www.facebook.com/sartoriwellness



PLEASE SUPPORT OUR ADVERTISERS

FOR YOUR DIARY

Saturday 1st February: North Beds Ramblers Walk - Woburn (MK17 9PG) at 1pm. 6.5 miles. Meet at free car park in Park Street. Opposite St Mary's Church. From Woburn, through the deer park to Church End. Then via Battlesden Lane to Potsgrove. Return to Woburn via footpaths. For further details go to www.ramblers.org.uk/north-bedfordshire.

Saturday 8th February: North Beds Ramblers Walk - Old Warden (SG18 9HD) at 10am. 12 miles. Park in car park of the Church of St Leonard on Church Lane. This countryside walk includes the Greensand Ridge and goes through Cople, Northill and the Shuttleworth Estate. For further details go to www.ramblers.org.uk/north-bedfordshire.

Saturday 8th February: North Beds Ramblers Walk - Grafham Water (PE28 0BE) at 1pm. 7 miles. Meet at junction of Church Road and Buckden Road. Walking towards north shore of Grafham Water, turning off towards Easton before returning to Grafham Water. For further details go to www.ramblers.org.uk/north-bedfordshire.

Tuesday 11th February: Addison Centre, Kempston at 2.15pm. Bedford National Trust Meeting. Speakers: Julian and Valerie Rutherford - 'The Two Apothecaries' Experienced re-enactors who portray the role of the Medieval Apothecary in a living history context. Tea available before the meeting. There will be a small entrance fee. Plenty of parking. If you want further information ring Betty Thomas on 01480 860421

Saturday 15th February: Keysoe Village Hall at 9am-11am. Keysoe Big Breakfast. Full English £7.50. Small Breakfast £4.50. Includes Tea and Coffee. No need to book.

Saturday 15th February: Great Staughton Village Hall. 11.30am-2.30pm. Great Staughton Food and Craft Market. Have a browse at the many stalls and grab a bargain or taste some delicious food.

Friday 21st February: Colmworth Village Hall at 7.30pm. Colmworth and Neighbours History Society. Speaker Nick Cooke on 'Bletchley Park'. Visitors £4. Membership £12.50p

Tuesday 11th March: Addison Centre, Kempston at 2.15pm. Bedford National Trust Meeting. Speaker David Longman - 'A collection of weird and wonderful and sometimes moving legends and stories associated with various churches in Bedfordshire.' Tea available before the meeting. There will be a small entrance fee. Plenty of parking. If you want further information ring Betty Thomas on 01480 860421

Saturday 15th March: Great Staughton Village Hall at 11.30am-2.30pm. Great Staughton Monthly Food and Craft Fayre.

Tuesday 13th-Saturday 17th May: Sharnbrook Mill Theatre. Godspell. Further details to be confirmed.

Every Sunday: Great Barford Village Hall at 10am. Great Barford Run Together. Running for fun for all standards including novices.

Every Thursday: Riseley Village Hall 3.30-5pm. Riseley Bus Stop Cafe for School Years 7-13 During school term.

First Friday of the Month: Keysoe Village Hall at 7.30pm. Bar Night

Every Saturday: There may be football matches at Riseley, Oakley and Thurleigh

FOR YOUR DIARY

£1 per insertion per 30 days for a max 30 word insertion, cheque payable to Grassroots Publications, may be sent to Grassroots Publications, 2, Strawberry Hill Cottages, Knotting Green, Bedford, MK44 1AB Use this section to advertise any community or social event that may be coming up in the forthcoming months. It can include sports events. We reserve the right to omit any dates if payment is not made. If in doubt feel free to contact us on 07725 812963 or email: dailygrunch@outlook.com. Price includes VAT



Sales, Lettings & Auctions



BRITISH
PROPERTY
AWARDS

2021



GOLD WINNER

ESTATE AGENT
IN BEDFORD



Have you seen... We **won!**
For a winning service, **talk to us.**

01234 327744 | sales@laneandholmes.co.uk | laneandholmes.co.uk

GRUNCH NEWS



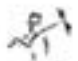
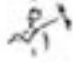
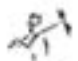
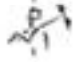

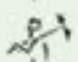
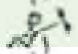
● Every Voice Choir Thurleigh meet every Thursday at St Peter's Church, Thurleigh at 7.30pm. The Choir performs music of all types from classical to pop and musicals to rock. All are welcome to join.



Telephone 01234 709163
or 07899 016129



Qualified Chimney Sweep

-  Riseley based professional Chimney Sweep.
-  Fully qualified member of The Guild of Master Sweepers.
-  Police CRB checked and £2 million liability insurance.
-  Service reports that are recognised by all insurance companies.
-  Specialist equipment used for Woodburning Stoves & Lined Chimneys.
-  Recommended by local Stove / Fireplace installers.
-  CCTV inspections and reports.

PLEASE SUPPORT OUR ADVERTISERS

Contact Tony, your local Chimney Sweep.

www.black-horse-chimney-sweep.co.uk

e-mail tnav59@btinternet.com



**93A High Street, Rushden
NN10 0NZ**

01933 350866

app.timbrownsbutchers.com

enquiries@tebrownbutchers.co.uk

**Beef, Lamb, Pork, Chickens, Sausages, Bacon
and so much more**



BEDFORD YOUNG FARMERS TRACTOR RUN



Bedford and District Young Farmers staged another successful Tractor Run during the Christmas period.

The Run started at Stagsden and went through villages such as Pavenham, Felmersham, pictured, and Carlton, finishing at Stoke Goldington.

The event raised money for The Rural Communities Mental Health Foundation.

COVERAGE ON PAGES 21-23

FRIDAY 27th DECEMBER

BEDFORD YOUNG FARMERS TRACTOR RUN



COVERAGE ON PAGES 21-23

FRIDAY 27th DECEMBER

BEDFORD YOUNG FARMERS TRACTOR RUN



COVERAGE ON PAGES 21-23

FRIDAY 27th DECEMBER

GRUNCH RECIPES OUR FAVOURITES

Root Vegetable and Nut Crumble Friends and Family Cooking - Ainsley Harriot

Ingredients

175g peeled potatoes
175g peeled carrots
175g peeled parsnips
175g peeled and seeded butternut squash
175g peeled swede
25g butter
2 leeks cleaned and sliced
50g wholemeal flour
300ml vegetable stock
150ml milk
1 x 200g chopped tomatoes
Leaves from **½ x 20g** packet of parsley chopped
Salt and freshly ground pepper

For The Crumble Topping

175g plain wholemeal flour
110g butter
100g Cheddar cheese, coarsely grated
75g mixed shelled nuts, Brazils, almonds and cashews coarsely chopped

1tbs sunflower seeds
1tbs sesame seeds

Method

Cut the root vegetables into 2.5cm chunks. Heat the butter in a large saucepan, add the prepared root vegetables, cover and cook gently for 30 minutes. Add the leeks and cook for a further 3-4 minutes until tender.

Stir in the flour and cook for a further minute. Gradually stir in the stock, milk and chopped tomatoes. Cover and simmer for 10 minutes until just tender.

Pre-heat the oven to 190°C. For the topping, work the butter into the flour until it resembles breadcrumbs. Stir in grated cheese, nuts and seeds. Stir parsley into filling and spoon in shallow ovenproof dish. Cover with topping and bake for 30 minutes until golden and bubbling.

GP SERVICES GROUNDWORK AND DIGGER HIRE



**PETER HAYES
PROPRIETOR**

- Mini Digger and Driver Hire
- Various Size machines
- Breaker/Auger Attachments
- Dumper Hire
- Foundations/Concreting/Drainage
- Site Clearance
- Tree and Root Removal
- Sewage Treatment Plants Installed
- Leach Fields Installed
- Road Construction/Drives
- Patios/Hard Landscaping
- Menage/Horse Arena Construction
- Muck Heap Removal
- Fencing

**01234 782940
07932 002937**

**enquiries@gpservicesonline.com
www.gpservicesonline.com**

FULLY INSURED

GRUNCH TEASER



Previous Teaser Answer
Kimbolton

IN WHICH VILLAGE
WOULD YOU FIND
THIS SCENE?

Answer in February



ABACAB DOG GROOMING

New dog grooming service in Odell. We offer a personal service aimed to meet the needs of you and your dog, catering for all breeds large or small. Our services include:-

- Clipping/trimming
- Hand stripping (Terriers and Spaniels)
- Nail trims

TELEPHONE:- 01234 720825 OR 07860 837043

SJ TAX & ACCOUNTING SERVICES

QUALIFIED ACCOUNTANT
FCCA ATT

Professional and friendly service
Sole Traders, Limited Companies
Partnerships, Business Start-ups
Bookkeeping, Payroll, CIS
Subcontractors
VAT & Tax

sally@sjtax.co.uk
01234 831997
07899 808592

GRUNCH THEATRE

Blithe Spirit
Produced by Bedford Drama Company
The Place, Bedford
18th - 22nd February
7.30pm
Tickets: £16 Concessions: £14/£12

In the quaint English countryside, Charles Condomine, a successful novelist, is seeking inspiration for his next book.

To gather material, he invites the eccentric medium Madame Arcati to conduct a séance at his home, much to the amusement of his wife, Ruth, and their friends. However, the evening takes an unexpected turn when Madame Arcati inadvertently summons the mischievous spirit of Charles's first wife, Elvira.

Elvira, with her ghostly charm and wit, decides to stick around, creating havoc and hilarity



as she meddles in Charles's current marriage. Caught between his two wives—one alive and one deceased—Charles finds himself in a whirlwind of supernatural shenanigans.

FOR FURTHER DETAILS CONTACT THE PLACE BEDFORD
www.theplacebedford.org.uk or phone 01234 354321

GRUNCH THEATRE

Exploring With Kaye Leidoskope -
Exploring Transport
Produced by Kaye Mahoney
The Place, Bedford
28th February at 10am
Tickets: Pay What You Can
£9, £7.50 or £6. Adults £2

Join Kaye Leidoskope for these lively and lovely interactive storytelling sessions for under-fives and their grown-ups. Expect songs, games, crafts and dancing ...perfect for little ones to creatively learn through play!

Kaye Leidoskope (aka Kaye Mahoney) is an experienced performer and workshop leader who loves to help little ones (and big ones!) to create and learn. She also runs Puggle Club, the pre-schooler's creative arts programme at The Higgins, and you can follow her on social media to find out more at:

<https://www.instagram.com/k.leidoskope/>
and <https://www.facebook.com/k.leidoskope/>



FOR FURTHER DETAILS CONTACT THE PLACE BEDFORD
www.theplacebedford.org.uk or phone 01234 354321

GRUNCH THEATRE

From Scratch
Produced by Mona
The Place, Bedford
1st February
7.30pm
Tickets: £10

From Scratch is Bedford's very own short-play Scratch Night, aiming to provide a platform for new and upcoming artists to share their work.

Playwrights, directors and actors will have the opportunity to showcase their talents as we stage a series of short plays in the legendary Place Theatre on February 1st 2025.

We invite you for an evening of raucous fun with a line-up of brand, spanking new short plays to keep you entertained.

Line-up to be announced. Keep an eye on our social media to be the first to hear about this season's exciting plays!



FOR FURTHER DETAILS CONTACT THE PLACE BEDFORD
www.theplacebedford.org.uk or phone 01234 354321

GRUNCH THEATRE

Platform - Brave Youth Theatre
Produced by: Brave Youth
The Place, Bedford
13th - 15th February
7.30pm (2.30pm and 6pm on 15th Feb)
Tickets: Pay What You Can: £7, £10, £14

It's 2023, Charlie, Alex and Olivia are growing up in the post Covid world and things are starting to get weird. Charlie is battling with conspiracy theories, Olivia can't get anyone to like her posts and Alex is just a troll (In more ways than one).

Join us as we follow the lives of three teenagers on their journey through life and see how they cope with the twists and turns of social media. From tiktok to Insta via Snapchat, their lives will never be the same again. Created at the height of the pandemic, Platform delves into the darker side of social media.



FOR FURTHER DETAILS CONTACT THE PLACE BEDFORD
www.theplacebedford.org.uk or phone 01234 354321

ST NEOTS FOLK CLUB EVENTS

Tuesday 4th February

ELIZABETH AND JAMESON

An award-winning folk duo based in Hertfordshire. Hannah Elizabeth and Griff Jameson have joined forces to create an acoustic indie-folk sound, merging their individual musical backgrounds of traditional folk and folk pop/rock.

Tuesday 11th February

TOM BRYANS

Tom Bryans is a composer, entertainer and recording artist, based in Cambridgeshire,

Tuesday 18th February

THE MEDLARS

The Medlars are folk trio from Essex, performing songs and tunes originated and rooted in the folk tradition, revisiting and creating new arrangements of classic English folk songs with a contemporary feel. The Medlars are Alie Barnes - vocals, Emma Hardy - fiddle/vocals, Tom Hardy guitar/vocals.

Tuesday 25th February

ROUND THE ROOM AND AGM

We will start this evening with the AGM and then move on to our usual Round The Room. This is a friendly sing-around atmosphere, performers and audience all welcome.



ELIZABETH AND JAMESON

Tuesday 4th March

ERIC SEDGE

Eric found early success as songwriter and multi-instrumentalist in folk duo 'The Broadside Boys'. Touring as a solo performer since 2017, Eric now resides in North Yorkshire writing and performing songs inspired by the landscapes and people of the local dales and his native East Anglia.

ST NEOTS FOLK CLUB

St Neots Folk Club meets on Tuesday evening at 7:30pm to 9:45pm at The Eatons, The Eatons, 18 The Maltings, Eaton Socon, PE19 8ES. Next to Co-op.

Non-Members £10 / Members £8 unless otherwise stated. Membership: £20/year.

To contact St Neots Folk Club:

email: stneotsfolkclub@aol.com

Tel: 01234 376033



THE MEDLARS

GRUNCH FOOTBALL

BEDFORDSHIRE COUNTY LEAGUE

- Riseley Sports produced their best performance of the season when they inflicted a 7-2 drubbing on Queens Park Crescents at their ground in the **Premier Division** on **25th January**.

Matthew Smith was the hero of the hour for the visitors with a fine hat-trick.

Stalwart James Cooke weighed in with two while the other efforts came from Mitchell Crook and Lewis Donald.

AFC Oakley found life difficult when they entertained an improving Marston Shelton Rovers.

It was a battling display by Rovers and they were rewarded with a 3-1 victory with goals from Harry Baker, Jamie Cerminara and Luke Clifford.

M&DH Clapham Sports made progress in the **Jubilee Cup** when they bagged a 2-1 win at home to AFC Bedford United.

William Buckland gave Sports the lead in the 34th minute. AFC Bedford United fought back to earn an equaliser after 75th minute but Flynn Bradley secured the victory for the hosts in the 80th minute.

Thurleigh exited the **Jubilee Cup** when they suffered a 2-0 defeat at New Bradwell St Peter Development.

Goals from Max Norman, George Shingleton, Freddie Stonebridge and Ewan Bell saw Turvey to a 4-2 victory over M&DH Clapham Sports in **Division Four**.

FIXTURES - 1st February

Bedfordshire County League - Premier

Division: Crawley Green Development v Riseley Sports. **Britannia Cup:** Totternhoe Reserves v AFC Oakley. **Centenary Cup:** AFC Oakley Development v Buffs. **Division Two North:** Shefford Town & Campton Development v Thurleigh; AFC Bedford United v M&DH Clapham Sports. **Watson Shield:** M&DH Clapham Sports Reserves v Stopsley United Reserves. **Division Four:** Henlow Hurricanes v Turvey.

www.ousevalleyphysio.co.uk

Claudia von Caron

PHYSIOTHERAPIST

- Back pain & sciatica
- Neck & shoulder pain
- Whiplash & headaches
- Sports injuries
- Work related disorders
- Repetitive strain
- Injuries to joints & soft tissues
- MS & stroke

Mrs Claudia von Caron MCSP, Chartered Physiotherapist

Ouse Valley Physiotherapy Practice

3 The Drive, Sharnbrook, Bedford MK44 1HU

claudia@ousevalleyphysio.co.uk

Call 01234 781777



BODY



HARMONY



DAILY GRUNCH BIG MATCH

AFC OAKLEY 1
MARSTON SHELTON ROVERS 3



AFC Oakley struggled to come to terms with their Bedfordshire County League Premier Division encounter against Marston Shelton Rovers on 25th January.

As a result, the in-form AFC Oakley suffered a shock 3-1 home defeat.

SPOTLIGHT ON SHARNBROOK COLWORTH RUGBY CLUB



Sharnbrook and Colworth were involved in a titanic home battle against Milton Keynes II in an East Midlands League Two clash on 30th November.

The hosts were finally able to breach the Milton Keynes II defence to clinch a 17-13 victory.





Soulbrook
Property Services

Extensions



Renovations



Carpentry & Joinery



Bathrooms



Kitchens

01234 782558

07731 818990

www.soulbrook.co.uk